

## ApoL6 Polyclonal Antibody

|                              |                                                                                                                                                                                                                                    |
|------------------------------|------------------------------------------------------------------------------------------------------------------------------------------------------------------------------------------------------------------------------------|
| <b>Catalog No :</b>          | YT5059                                                                                                                                                                                                                             |
| <b>Reactivity :</b>          | Human                                                                                                                                                                                                                              |
| <b>Applications :</b>        | WB;ELISA                                                                                                                                                                                                                           |
| <b>Target :</b>              | ApoL6                                                                                                                                                                                                                              |
| <b>Gene Name :</b>           | APOL6                                                                                                                                                                                                                              |
| <b>Protein Name :</b>        | Apolipoprotein L6                                                                                                                                                                                                                  |
| <b>Human Gene Id :</b>       | 80830                                                                                                                                                                                                                              |
| <b>Human Swiss Prot No :</b> | Q9BWW8                                                                                                                                                                                                                             |
| <b>Immunogen :</b>           | Synthesized peptide derived from ApoL6 . at AA range: 240-320                                                                                                                                                                      |
| <b>Specificity :</b>         | ApoL6 Polyclonal Antibody detects endogenous levels of ApoL6 protein.                                                                                                                                                              |
| <b>Formulation :</b>         | Liquid in PBS containing 50% glycerol, 0.5% BSA and 0.02% sodium azide.                                                                                                                                                            |
| <b>Source :</b>              | Polyclonal, Rabbit,IgG                                                                                                                                                                                                             |
| <b>Dilution :</b>            | WB 1:500 - 1:2000. ELISA: 1:10000. Not yet tested in other applications.                                                                                                                                                           |
| <b>Purification :</b>        | The antibody was affinity-purified from rabbit antiserum by affinity-chromatography using epitope-specific immunogen.                                                                                                              |
| <b>Concentration :</b>       | 1 mg/ml                                                                                                                                                                                                                            |
| <b>Storage Stability :</b>   | -15°C to -25°C/1 year(Do not lower than -25°C)                                                                                                                                                                                     |
| <b>Observed Band :</b>       | 38kD                                                                                                                                                                                                                               |
| <b>Background :</b>          | This gene is a member of the apolipoprotein L gene family. The encoded protein is found in the cytoplasm, where it may affect the movement of lipids or allow the binding of lipids to organelles. [provided by RefSeq, Jul 2008], |

**Function :**

function:May affect the movement of lipids in the cytoplasm or allow the binding of lipids to organelles.,similarity:Belongs to the apolipoprotein L family.,tissue specificity:Widely expressed; highly expressed in the uterus, fetal brain and spinal cord, also detected in heart, liver, lung, colon, spleen, thymus, prostate, placenta, adrenal gland, salivary and mammary gland.,

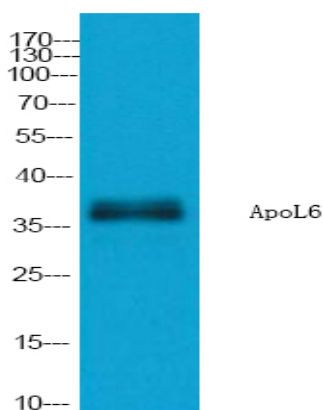
**Subcellular Location :**

Cytoplasm .

**Expression :**

Widely expressed; highly expressed in the uterus, fetal brain and spinal cord, also detected in heart, liver, lung, colon, spleen, thymus, prostate, placenta, adrenal gland, salivary and mammary gland.

## Products Images



Western Blot analysis of extracts from K562 cells, using ApoL6 Polyclonal Antibody. Secondary antibody(catalog#:RS0002) was diluted at 1:20000