

## A1BG Polyclonal Antibody

<b>Catalog No :</b>	YT5057
<b>Reactivity :</b>	Human;Rat;Mouse;
<b>Applications :</b>	WB;IHC;IF;ELISA
<b>Target :</b>	A1BG
<b>Gene Name :</b>	A1BG
<b>Protein Name :</b>	Alpha-1B-glycoprotein
<b>Human Gene Id :</b>	1
<b>Human Swiss Prot No :</b>	P04217
<b>Mouse Swiss Prot No :</b>	Q19LI2
<b>Immunogen :</b>	Synthesized peptide derived from A1BG . at AA range: 100-180
<b>Specificity :</b>	A1BG Polyclonal Antibody detects endogenous levels of A1BG protein.
<b>Formulation :</b>	Liquid in PBS containing 50% glycerol, 0.5% BSA and 0.02% sodium azide.
<b>Source :</b>	Polyclonal, Rabbit,IgG
<b>Dilution :</b>	WB 1:500 - 1:2000. IHC: 1:100-300 ELISA: 1:40000.. IF 1:50-200
<b>Purification :</b>	The antibody was affinity-purified from rabbit antiserum by affinity-chromatography using epitope-specific immunogen.
<b>Concentration :</b>	1 mg/ml
<b>Storage Stability :</b>	-15°C to -25°C/1 year(Do not lower than -25°C)
<b>Observed Band :</b>	28kD

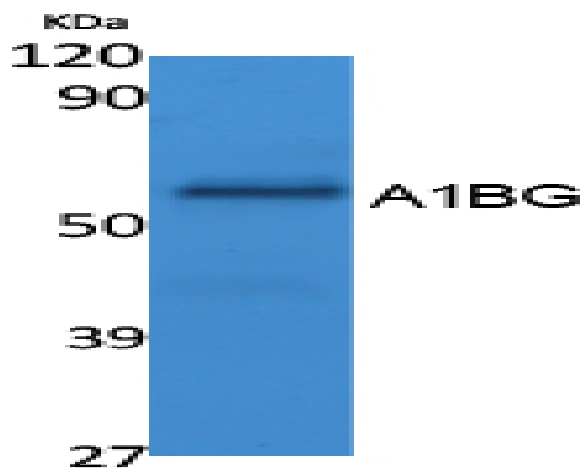
**Background :** The protein encoded by this gene is a plasma glycoprotein of unknown function. The protein shows sequence similarity to the variable regions of some immunoglobulin supergene family member proteins. [provided by RefSeq, Jul 2008],

**Function :** online information:The Singapore human mutation and polymorphism database,similarity:Contains 5 Ig-like V-type (immunoglobulin-like) domains.,tissue specificity:Plasma.,

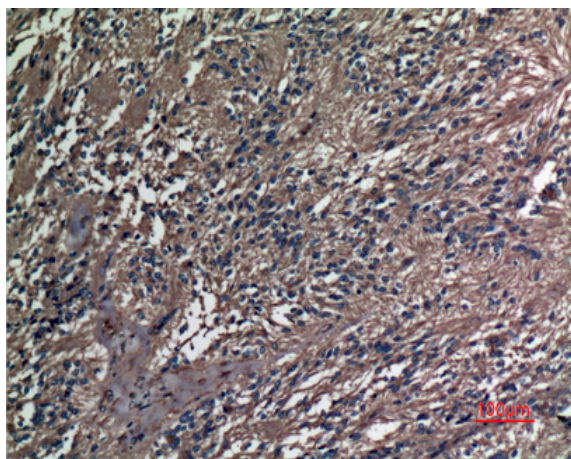
**Subcellular Location :** Secreted.

**Expression :** Plasma.

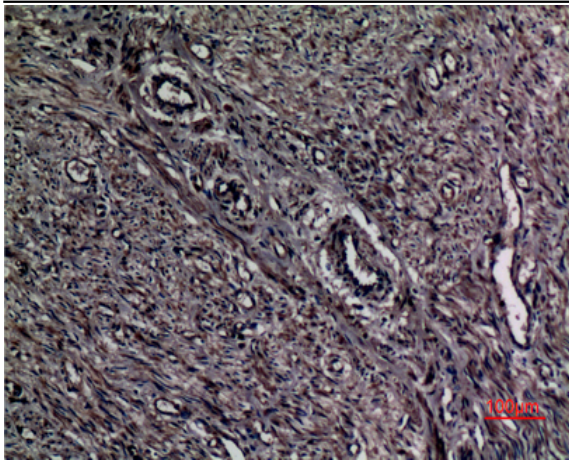
## Products Images



Western Blot analysis of extracts from K562 cells, using A1BG Polyclonal Antibody. Secondary antibody(catalog#:RS0002) was diluted at 1:20000



Immunohistochemical analysis of paraffin-embedded human-ovary, antibody was diluted at 1:100



Immunohistochemical analysis of paraffin-embedded human-uterus, antibody was diluted at 1:100