

## AR- $\beta$ 2 Polyclonal Antibody

<b>Catalog No :</b>	YT5048
<b>Reactivity :</b>	Human;Mouse;Rat
<b>Applications :</b>	WB;ELISA
<b>Target :</b>	Adrenergic Receptor $\beta$ 2
<b>Fields :</b>	>>Calcium signaling pathway;>>cGMP-PKG signaling pathway;>>cAMP signaling pathway;>>Neuroactive ligand-receptor interaction;>>Adrenergic signaling in cardiomyocytes;>>Regulation of lipolysis in adipocytes;>>Renin secretion;>>Salivary secretion;>>Chemical carcinogenesis - receptor activation
<b>Gene Name :</b>	ADRB2
<b>Protein Name :</b>	Beta-2 adrenergic receptor
<b>Human Gene Id :</b>	154
<b>Human Swiss Prot No :</b>	P07550
<b>Mouse Gene Id :</b>	11555
<b>Mouse Swiss Prot No :</b>	P18762
<b>Rat Swiss Prot No :</b>	P10608
<b>Immunogen :</b>	Synthesized peptide derived from AR- $\beta$ 2 . at AA range: 300-380
<b>Specificity :</b>	AR- $\beta$ 2 Polyclonal Antibody detects endogenous levels of AR- $\beta$ 2 protein.
<b>Formulation :</b>	Liquid in PBS containing 50% glycerol, 0.5% BSA and 0.02% sodium azide.
<b>Source :</b>	Polyclonal, Rabbit,IgG
<b>Dilution :</b>	WB 1:500 - 1:2000. ELISA: 1:5000. Not yet tested in other applications.
<b>Purification :</b>	The antibody was affinity-purified from rabbit antiserum by affinity-

chromatography using epitope-specific immunogen.

---

**Concentration :** 1 mg/ml

---

**Storage Stability :** -15°C to -25°C/1 year(Do not lower than -25°C)

---

**Observed Band :** 46kD

---

**Cell Pathway :** Calcium;Neuroactive ligand-receptor interaction;Endocytosis;

---

**Background :** This gene encodes beta-2-adrenergic receptor which is a member of the G protein-coupled receptor superfamily. This receptor is directly associated with one of its ultimate effectors, the class C L-type calcium channel Ca(V)1.2. This receptor-channel complex also contains a G protein, an adenylyl cyclase, cAMP-dependent kinase, and the counterbalancing phosphatase, PP2A. The assembly of the signaling complex provides a mechanism that ensures specific and rapid signaling by this G protein-coupled receptor. This gene is intronless. Different polymorphic forms, point mutations, and/or downregulation of this gene are associated with nocturnal asthma, obesity and type 2 diabetes. [provided by RefSeq, Jul 2008],

---

**Function :** disease:Polymorphic forms of ADRB2 could impart some form of nocturnal asthma.,function:Beta-adrenergic receptors mediate the catecholamine-induced activation of adenylate cyclase through the action of G proteins. The beta-2-adrenergic receptor binds epinephrine with an approximately 30-fold greater affinity than it does norepinephrine.,PTM:Palmitoylated; may reduce accessibility of Ser-345 and Ser-346 by anchoring Cys-341 to the plasma membrane. Agonist stimulation promotes depalmitoylation and further allows Ser-345 and Ser-346 phosphorylation.,PTM:Phosphorylated by PKA and BARK upon agonist stimulation, which mediates homologous desensitization of the receptor. PKA-mediated phosphorylation seems to facilitate phosphorylation by BARK. Phosphorylated upon DNA damage, probably by ATM or ATR.,PTM:Phosphorylation of Tyr-141 is induced by insulin and leads to supersensitization of the recep

---

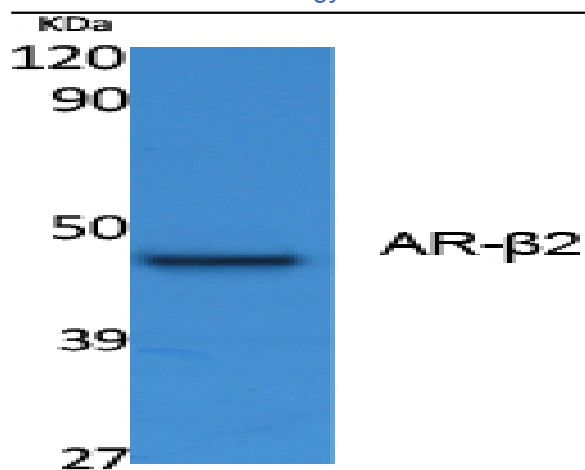
**Subcellular Location :** Cell membrane ; Multi-pass membrane protein . Early endosome . Golgi apparatus . Colocalizes with VHL at the cell membrane (PubMed:19584355). Activated receptors are internalized into endosomes prior to their degradation in lysosomes (PubMed:20559325). Activated receptors are also detected within the Golgi apparatus (PubMed:27481942) . .

---

**Expression :** Blood,Brain,Fetal brain,Heart,Leukocyte,Prostate,Thyroid,

---

**Products Images**



Western Blot analysis of extracts from K562 cells, using AR-β2 Polyclonal Antibody. Secondary antibody(catalog#:RS0002) was diluted at 1:20000