

## Layilin Polyclonal Antibody

<b>Catalog No :</b>	YT5222
<b>Reactivity :</b>	Human;Mouse;Rat
<b>Applications :</b>	WB;IHC;IF;ELISA
<b>Target :</b>	Layilin
<b>Gene Name :</b>	LAYN
<b>Protein Name :</b>	Layilin
<b>Human Gene Id :</b>	143903
<b>Human Swiss Prot No :</b>	Q6UX15
<b>Mouse Gene Id :</b>	244864
<b>Mouse Swiss Prot No :</b>	Q8C351
<b>Immunogen :</b>	The antiserum was produced against synthesized peptide derived from the Internal region of human LAYN. AA range:71-120
<b>Specificity :</b>	Layilin Polyclonal Antibody detects endogenous levels of Layilin protein.
<b>Formulation :</b>	Liquid in PBS containing 50% glycerol, 0.5% BSA and 0.02% sodium azide.
<b>Source :</b>	Polyclonal, Rabbit,IgG
<b>Dilution :</b>	WB 1:500 - 1:2000. IHC: 1:100-300 ELISA: 1:20000.. IF 1:50-200
<b>Purification :</b>	The antibody was affinity-purified from rabbit antiserum by affinity-chromatography using epitope-specific immunogen.
<b>Concentration :</b>	1 mg/ml
<b>Storage Stability :</b>	-15°C to -25°C/1 year(Do not lower than -25°C)

**Observed Band :** 43kD

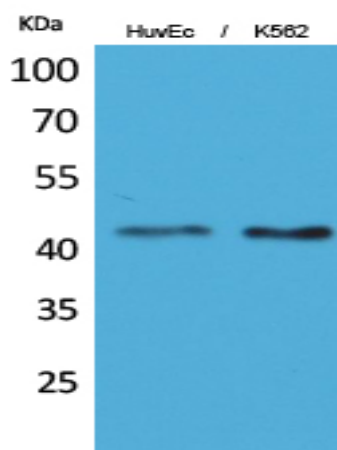
**Background :** domain:The C-terminal domain interacts with the N-terminal domain of RDX.,function:Receptor for hyaluronate.,similarity:Contains 1 C-type lectin domain.,subcellular location:Colocalizes with TLN1 at the membrane ruffles.,subunit:Interacts with NF2, RDX and TLN1.,

**Function :** domain:The C-terminal domain interacts with the N-terminal domain of RDX.,function:Receptor for hyaluronate.,similarity:Contains 1 C-type lectin domain.,subcellular location:Colocalizes with TLN1 at the membrane ruffles.,subunit:Interacts with NF2, RDX and TLN1.,

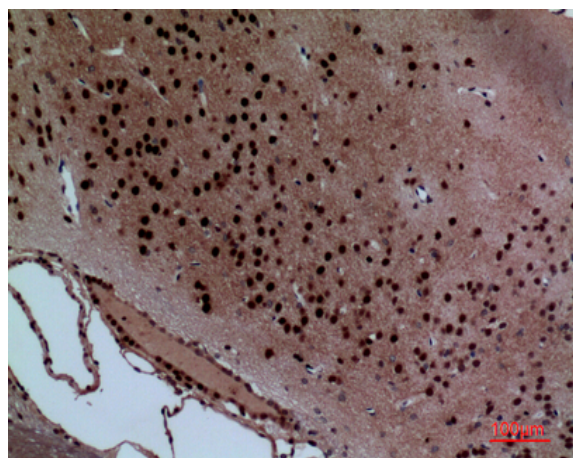
**Subcellular Location :** Membrane ; Single-pass type I membrane protein . Colocalizes with TLN1 at the membrane ruffles. .

**Expression :** Brain,

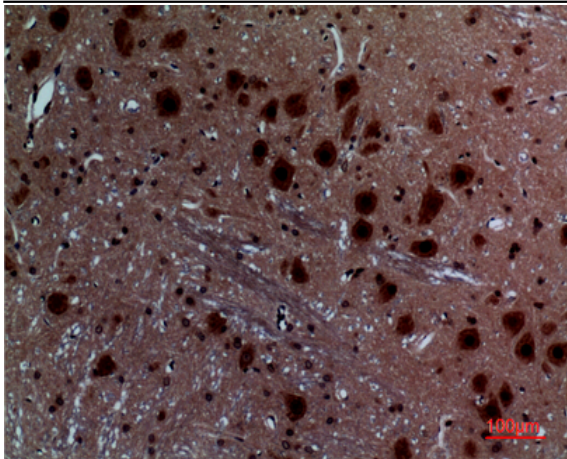
## Products Images



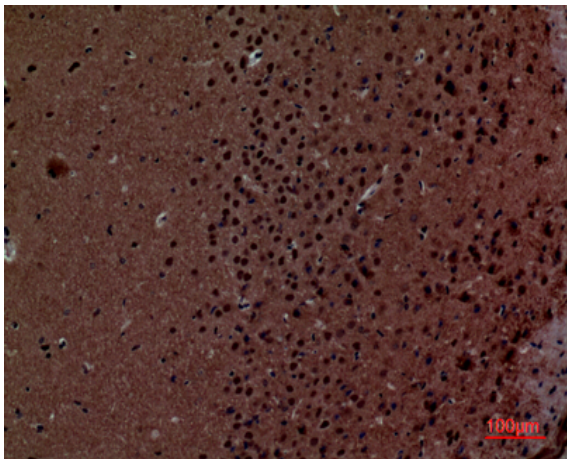
Western Blot analysis of HuvEc, K562 cells using Layilin Polyclonal Antibody. Secondary antibody(catalog#:RS0002) was diluted at 1:20000



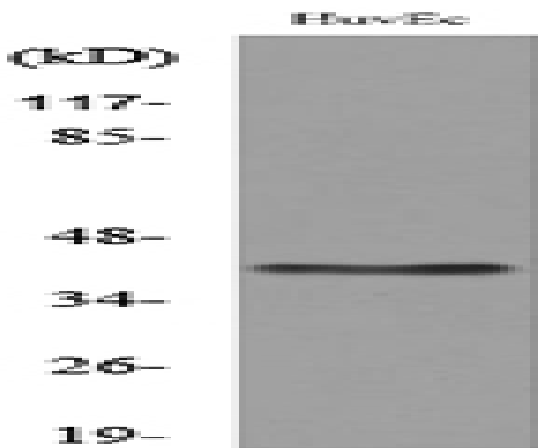
Immunohistochemical analysis of paraffin-embedded rat-brain, antibody was diluted at 1:100



Immunohistochemical analysis of paraffin-embedded rat-brain, antibody was diluted at 1:100



Immunohistochemical analysis of paraffin-embedded mouse-brain, antibody was diluted at 1:100



Western blot analysis of lysate from HUVEC cells, using LAYN Antibody.