

IL-5Ra Polyclonal Antibody

Catalog No :	YT5214
Reactivity :	Human;Rat;Mouse;
Applications :	WB;IHC;IF;ELISA
Target :	IL-5Ra
Fields :	>>Cytokine-cytokine receptor interaction;>>JAK-STAT signaling pathway;>>Hematopoietic cell lineage;>>Pathways in cancer
Gene Name :	IL5RA
Protein Name :	Interleukin-5 receptor subunit alpha
Human Gene Id :	3568
Human Swiss Prot No :	Q01344
Mouse Swiss Prot No :	P21183
Immunogen :	The antiserum was produced against synthesized peptide derived from the N-terminal region of human IL5RA. AA range:41-90
Specificity :	IL-5Ra Polyclonal Antibody detects endogenous levels of IL-5Ra protein.
Formulation :	Liquid in PBS containing 50% glycerol, 0.5% BSA and 0.02% sodium azide.
Source :	Polyclonal, Rabbit,IgG
Dilution :	WB 1:500 - 1:2000. IHC: 1:100-300 ELISA: 1:20000.. IF 1:50-200
Purification :	The antibody was affinity-purified from rabbit antiserum by affinity-chromatography using epitope-specific immunogen.
Concentration :	1 mg/ml
Storage Stability :	-15°C to -25°C/1 year(Do not lower than -25°C)

Observed Band : 47kD

Cell Pathway : Cytokine-cytokine receptor interaction;Jak_STAT;Hematopoietic cell lineage;

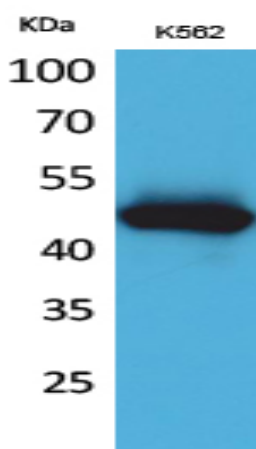
Background : The protein encoded by this gene is an interleukin 5 specific subunit of a heterodimeric cytokine receptor. The receptor is comprised of a ligand specific alpha subunit and a signal transducing beta subunit shared by the receptors for interleukin 3 (IL3), colony stimulating factor 2 (CSF2/GM-CSF), and interleukin 5 (IL5). The binding of this protein to IL5 depends on the beta subunit. The beta subunit is activated by the ligand binding, and is required for the biological activities of IL5. This protein has been found to interact with syndecan binding protein (syntenin), which is required for IL5 mediated activation of the transcription factor SOX4. Several alternatively spliced transcript variants encoding four distinct isoforms have been reported. [provided by RefSeq, Jul 2011],

Function : domain:The box 1 motif is required for JAK interaction and/or activation.,domain:The WSXWS motif appears to be necessary for proper protein folding and thereby efficient intracellular transport and cell-surface receptor binding.,function:This is the receptor for interleukin-5. The alpha chain binds to IL5.,similarity:Belongs to the type I cytokine receptor family. Type 5 subfamily.,subunit:Heterodimer of an alpha and a beta subunit. The beta subunit is common to the IL3, IL5 and GM-CSF receptors. Interacts with SDCBP.,tissue specificity:Expressed on eosinophils and basophils.,

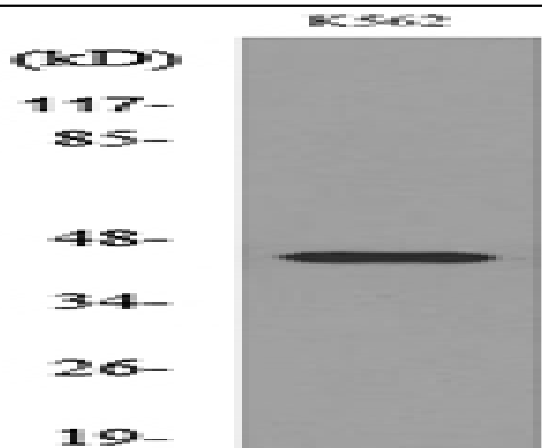
Subcellular Location : Membrane; Single-pass type I membrane protein.

Expression : Expressed on eosinophils and basophils.

Products Images



Western Blot analysis of K562 cells using IL-5R α Polyclonal Antibody. Secondary antibody(catalog#:RS0002) was diluted at 1:20000



Western blot analysis of lysate from K562 cells, using IL5RA Antibody.