

ZIP7 Polyclonal Antibody

Catalog No :	YT4950
Reactivity :	Human;Mouse;Rat
Applications :	WB;ELISA
Target :	ZIP7
Fields :	>>Alzheimer disease;>>Parkinson disease
Gene Name :	SLC39A7
Protein Name :	Zinc transporter SLC39A7
Human Gene Id :	7922
Human Swiss Prot No :	Q92504
Mouse Gene Id :	14977
Mouse Swiss Prot No :	Q31125
Immunogen :	The antiserum was produced against synthesized peptide derived from human SLC39A7. AA range:131-180
Specificity :	ZIP7 Polyclonal Antibody detects endogenous levels of ZIP7 protein.
Formulation :	Liquid in PBS containing 50% glycerol, 0.5% BSA and 0.02% sodium azide.
Source :	Polyclonal, Rabbit,IgG
Dilution :	WB 1:500 - 1:2000. ELISA: 1:5000. Not yet tested in other applications.
Purification :	The antibody was affinity-purified from rabbit antiserum by affinity-chromatography using epitope-specific immunogen.
Concentration :	1 mg/ml

Storage Stability : -15°C to -25°C/1 year(Do not lower than -25°C)

Observed Band : 50kD

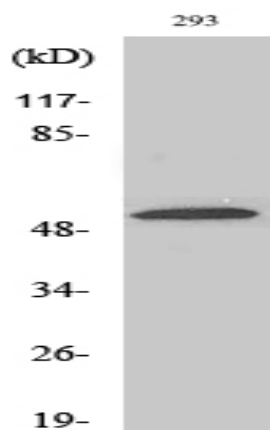
Background : The protein encoded by this gene transports zinc from the Golgi and endoplasmic reticulum to the cytoplasm. This transport may be important for activation of tyrosine kinases, some of which could be involved in cancer progression. Therefore, modulation of the encoded protein could be useful as a therapeutic agent against cancer. Alternative splicing results in multiple transcript variants. [provided by RefSeq, Jan 2014],

Function : similarity:Belongs to the ZIP transporter (TC 2.A.5) family. KE4/Catsup subfamily.,tissue specificity:Major expression in placenta, lung, kidney and pancreas.,

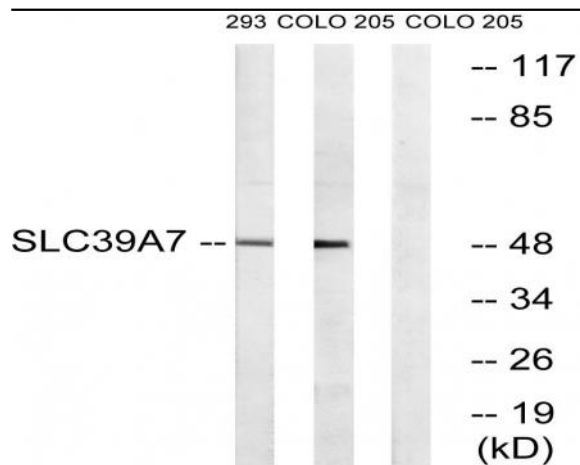
Subcellular Location : Endoplasmic reticulum membrane ; Multi-pass membrane protein . Golgi apparatus, cis-Golgi network membrane ; Multi-pass membrane protein .

Expression : Widely expressed.

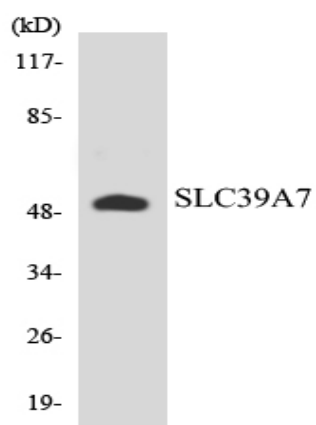
Products Images



Western Blot analysis of various cells using ZIP7 Polyclonal Antibody. Secondary antibody(catalog#:RS0002) was diluted at 1:20000



Western blot analysis of lysates from 293 and COLO cells, using SLC39A7 Antibody. The lane on the right is blocked with the synthesized peptide.



Western blot analysis of the lysates from HUVEC cells using SLC39A7 antibody.