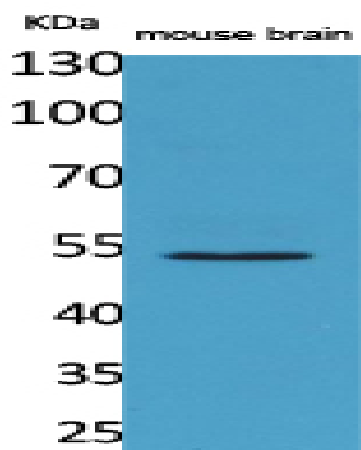


CPE Polyclonal Antibody

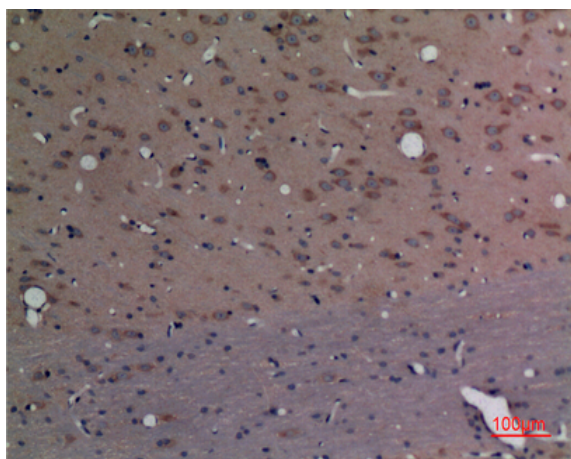
Catalog No :	YT5167
Reactivity :	Human;Mouse;Rat
Applications :	WB;IHC;IF;ELISA
Target :	CPE
Fields :	>>Type I diabetes mellitus
Gene Name :	CPE
Protein Name :	Carboxypeptidase E
Human Gene Id :	1363
Human Swiss Prot No :	P16870
Mouse Gene Id :	12876
Mouse Swiss Prot No :	Q00493
Rat Gene Id :	25669
Rat Swiss Prot No :	P15087
Immunogen :	The antiserum was produced against synthesized peptide derived from the C-terminal region of human CPE. AA range:427-476
Specificity :	CPE Polyclonal Antibody detects endogenous levels of CPE protein.
Formulation :	Liquid in PBS containing 50% glycerol, 0.5% BSA and 0.02% sodium azide.
Source :	Polyclonal, Rabbit,IgG
Dilution :	WB 1:500 - 1:2000. IHC: 1:100-300 ELISA: 1:20000.. IF 1:50-200

Purification :	The antibody was affinity-purified from rabbit antiserum by affinity-chromatography using epitope-specific immunogen.
Concentration :	1 mg/ml
Storage Stability :	-15°C to -25°C/1 year(Do not lower than -25°C)
Observed Band :	53kD
Cell Pathway :	Type I diabetes mellitus;
Background :	carboxypeptidase E(CPE) Homo sapiens This gene encodes a member of the M14 family of metallocarboxypeptidases. The encoded preproprotein is proteolytically processed to generate the mature peptidase. This peripheral membrane protein cleaves C-terminal amino acid residues and is involved in the biosynthesis of peptide hormones and neurotransmitters, including insulin. This protein may also function independently of its peptidase activity, as a neurotrophic factor that promotes neuronal survival, and as a sorting receptor that binds to regulated secretory pathway proteins, including prohormones. Mutations in this gene are implicated in type 2 diabetes. [provided by RefSeq, Nov 2015],
Function :	catalytic activity:Release of C-terminal arginine or lysine residues from polypeptides.,cofactor:Binds 1 zinc ion per subunit.,function:Removes residual C-terminal Arg or Lys remaining after initial endoprotease cleavage during prohormone processing. Processes proinsulin.,similarity:Belongs to the peptidase M14 family.,subcellular location:Secretory granules of pancreatic islets, adrenal gland, pituitary and brain.,
Subcellular Location :	[Isoform 1]: Cytoplasmic vesicle, secretory vesicle . Cytoplasmic vesicle, secretory vesicle membrane ; Peripheral membrane protein . Secreted . Associated with the secretory granule membrane through direct binding to lipid rafts in intragranular conditions. .
Expression :	Brain,Colon,Eye,

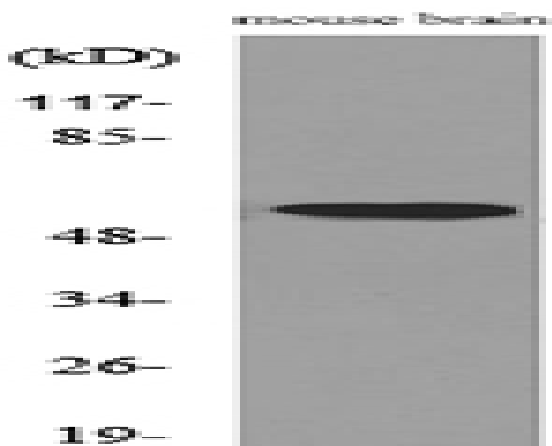
Products Images



Western Blot analysis of mouse brain cells using CPE Polyclonal Antibody. Secondary antibody(catalog#:RS0002) was diluted at 1:20000



Immunohistochemical analysis of paraffin-embedded rat-brain, antibody was diluted at 1:100



Western blot analysis of lysate from mouse brain cells, using CPE Antibody.