

HSPBAP1 Polyclonal Antibody

Catalog No :	YT5139
Reactivity :	Human;Rat;Mouse;
Applications :	WB;IHC;IF;ELISA
Target :	HSPBAP1
Gene Name :	HSPBAP1
Protein Name :	HSPB1-associated protein 1
Human Gene Id :	79663
Human Swiss Prot No :	Q96EW2
Mouse Swiss Prot No :	Q8BK58
Immunogen :	The antiserum was produced against synthesized peptide derived from the Internal region of human HSPBAP1. AA range:321-370
Specificity :	HSPBAP1 Polyclonal Antibody detects endogenous levels of HSPBAP1 protein.
Formulation :	Liquid in PBS containing 50% glycerol, 0.5% BSA and 0.02% sodium azide.
Source :	Polyclonal, Rabbit,IgG
Dilution :	WB 1:500 - 1:2000. IHC: 1:100-300 ELISA: 1:20000.. IF 1:50-200
Purification :	The antibody was affinity-purified from rabbit antiserum by affinity-chromatography using epitope-specific immunogen.
Concentration :	1 mg/ml
Storage Stability :	-15°C to -25°C/1 year(Do not lower than -25°C)
Observed Band :	55kD

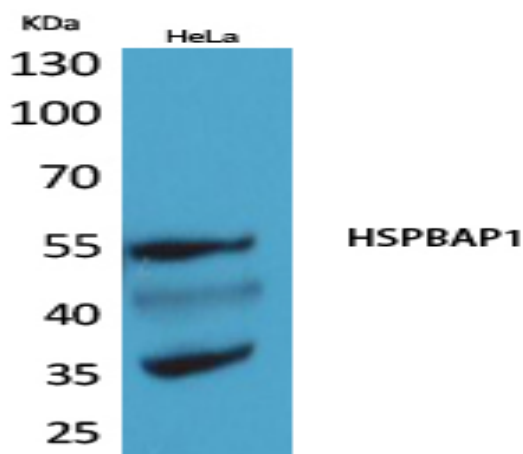
Background : This gene encodes a protein that binds to one of the small heat shock proteins, specifically hsp27. Hsp27 is involved with cell growth and differentiation. This encoded protein was found to be abnormally expressed in patients with intractable epilepsy, although how brain function is affected remains unknown. [provided by RefSeq, Sep 2011],

Function : disease:A chromosomal aberration involving HSPBAP1 is found in familial renal cell carcinoma 1 (RCC1) [MIM:144700]. Translocation t(2;3)(q35;q21) with the putative pseudogene DIRC3. Produces an hybrid mRNA encoding a truncated HSPBAP1 lacking the first 36 amino acids.,function:May play a role in cellular stress response.,similarity:Contains 1 JmjC domain.,subunit:Interacts with CRYAB and HSPB1.,tissue specificity:Widely expressed.,

Subcellular Location : Cytoplasm .

Expression : Widely expressed.

Products Images



Western Blot analysis of HeLa cells using HSPBAP1 Polyclonal Antibody. Secondary antibody(catalog#:RS0002) was diluted at 1:20000