

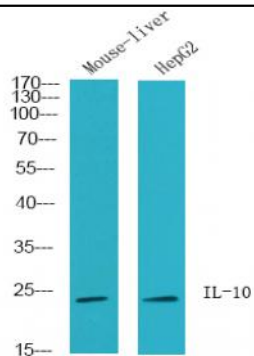
## IL-10 Polyclonal Antibody

<b>Catalog No :</b>	YT5138
<b>Reactivity :</b>	Human;Mouse;Rat
<b>Applications :</b>	WB;IHC;IF;ELISA
<b>Target :</b>	IL-10
<b>Fields :</b>	>>Cytokine-cytokine receptor interaction;>>Viral protein interaction with cytokine and cytokine receptor;>>FoxO signaling pathway;>>C-type lectin receptor signaling pathway;>>JAK-STAT signaling pathway;>>T cell receptor signaling pathway;>>Intestinal immune network for IgA production;>>Pertussis;>>Yersinia infection;>>Leishmaniasis;>>Chagas disease;>>African trypanosomiasis;>>Malaria;>>Toxoplasmosis;>>Amoebiasis;>>Staphylococcus aureus infection;>>Tuberculosis;>>Asthma;>>Autoimmune thyroid disease;>>Inflammatory bowel disease;>>Systemic lupus erythematosus;>>Allograft rejection
<b>Gene Name :</b>	IL10
<b>Protein Name :</b>	Interleukin-10
<b>Human Gene Id :</b>	3586
<b>Human Swiss Prot No :</b>	P22301
<b>Mouse Swiss Prot No :</b>	P18893
<b>Immunogen :</b>	The antiserum was produced against synthesized peptide derived from the Internal region of human IL10. AA range:71-120
<b>Specificity :</b>	IL-10 Polyclonal Antibody detects endogenous levels of IL-10 protein.
<b>Formulation :</b>	Liquid in PBS containing 50% glycerol, 0.5% BSA and 0.02% sodium azide.
<b>Source :</b>	Polyclonal, Rabbit,IgG
<b>Dilution :</b>	WB 1:500 - 1:2000. IHC: 1:100-300 ELISA: 1:20000. IF 1:100-300 Not yet

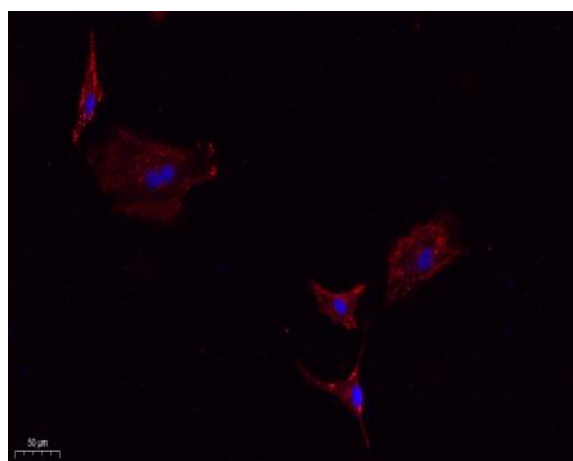
tested in other applications.

<b>Purification :</b>	The antibody was affinity-purified from rabbit antiserum by affinity-chromatography using epitope-specific immunogen.
<b>Concentration :</b>	1 mg/ml
<b>Storage Stability :</b>	-15°C to -25°C/1 year(Do not lower than -25°C)
<b>Observed Band :</b>	20kD
<b>Cell Pathway :</b>	Cytokine-cytokine receptor interaction;Jak_STAT;T_Cell_Receptor;Intestinal immune network for IgA production;Asthma;Autoimmune thyroid disease;Systemic lupus erythematosus;Allograft rejection;
<b>Background :</b>	The protein encoded by this gene is a cytokine produced primarily by monocytes and to a lesser extent by lymphocytes. This cytokine has pleiotropic effects in immunoregulation and inflammation. It down-regulates the expression of Th1 cytokines, MHC class II Ags, and costimulatory molecules on macrophages. It also enhances B cell survival, proliferation, and antibody production. This cytokine can block NF-kappa B activity, and is involved in the regulation of the JAK-STAT signaling pathway. Knockout studies in mice suggested the function of this cytokine as an essential immunoregulator in the intestinal tract. Mutations in this gene are associated with an increased susceptibility to HIV-1 infection and rheumatoid arthritis.[provided by RefSeq, May 2011],
<b>Function :</b>	disease:Defects in IL10 are a cause of susceptibility to Crohn disease (CD) [MIM:266600]. CD is a form of remitting inflammatory bowel disease (IBD). CD may involve any part of the gastrointestinal tract, but most frequently the terminal ileum and colon. Bowel inflammation is transmural and discontinuous. Crohn disease is commonly classified as autoimmune disease.,function:Inhibits the synthesis of a number of cytokines, including IFN-gamma, IL-2, IL-3, TNF and GM-CSF produced by activated macrophages and by helper T-cells.,online information:Interleukin-10 entry,online information:The Singapore human mutation and polymorphism database,similarity:Belongs to the IL-10 family.,subunit:Homodimer.,tissue specificity:Produced by a variety of cell lines, including T-cells, macrophages, mast cells and other cell types.,
<b>Subcellular Location :</b>	Secreted.
<b>Expression :</b>	Produced by a variety of cell lines, including T-cells, macrophages, mast cells and other cell types.

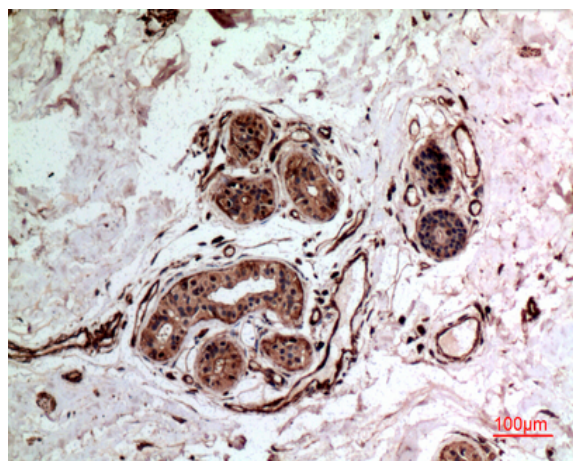
## Products Images



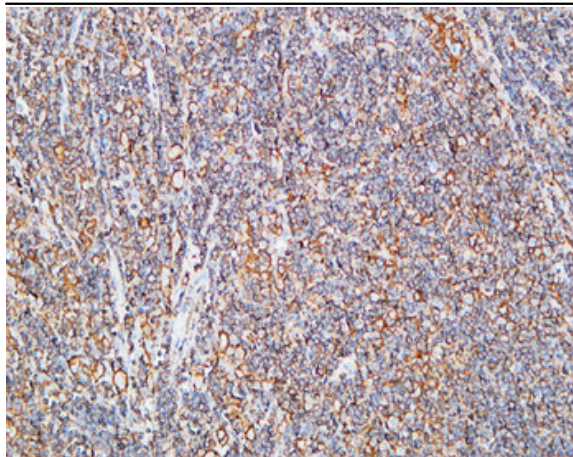
Western Blot analysis of HepG2, Mouse liver cells using IL-10 Polyclonal Antibody. Secondary antibody(catalog#:RS0002) was diluted at 1:20000



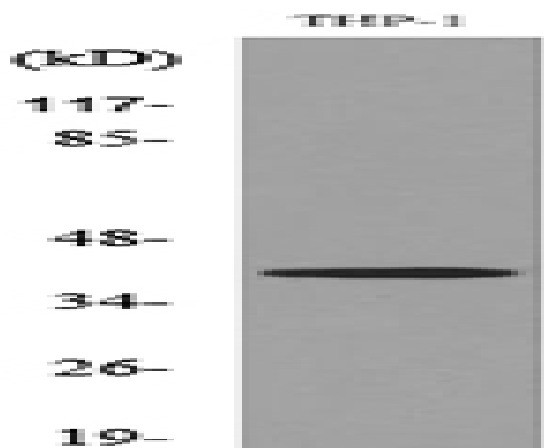
Immunofluorescence analysis of A549. 1,primary Antibody(red) was diluted at 1:200(4°C overnight). 2, Goat Anti Rabbit IgG (H&L) - Alexa Fluor 594 Secondary antibody was diluted at 1:1000(room temperature, 50min).3, Picture B: DAPI(blue) 10min.



Immunohistochemical analysis of paraffin-embedded human-breast-cancer, antibody was diluted at 1:100



Immunohistochemical analysis of paraffin-embedded Human lymphoma. 1, Antibody was diluted at 1:200(4° overnight). 2, High-pressure and temperature EDTA, pH8.0 was used for antigen retrieval. 3, Secondary antibody was diluted at 1:200(room temperature, 30min).



Western blot analysis of lysate from THP-1 cells, using IL10 Antibody.