

**PREP Polyclonal Antibody**

<b>Catalog No :</b>	YT5132
<b>Reactivity :</b>	Human;Mouse;Rat
<b>Applications :</b>	WB;IHC;IF;ELISA
<b>Target :</b>	PREP
<b>Gene Name :</b>	PREP
<b>Protein Name :</b>	Prolyl endopeptidase
<b>Human Gene Id :</b>	5550
<b>Human Swiss Prot No :</b>	Q8N6D4
<b>Immunogen :</b>	Synthesized peptide derived from PREP . at AA range: 10-90
<b>Specificity :</b>	PREP Polyclonal Antibody detects endogenous levels of PREP protein.
<b>Formulation :</b>	Liquid in PBS containing 50% glycerol, 0.5% BSA and 0.02% sodium azide.
<b>Source :</b>	Polyclonal, Rabbit,IgG
<b>Dilution :</b>	WB 1:500 - 1:2000. IHC: 1:100-300 ELISA: 1:20000.. IF 1:50-200
<b>Purification :</b>	The antibody was affinity-purified from rabbit antiserum by affinity-chromatography using epitope-specific immunogen.
<b>Concentration :</b>	1 mg/ml
<b>Storage Stability :</b>	-15 °C to -25 °C/1 year(Do not lower than -25 °C)
<b>Observed Band :</b>	80kD
<b>Background :</b>	The protein encoded by this gene is a cytosolic prolyl endopeptidase that cleaves peptide bonds on the C-terminal side of prolyl residues within peptides that are up to approximately 30 amino acids long. Prolyl endopeptidases have

been reported to be involved in the maturation and degradation of peptide hormones and neuropeptides. [provided by RefSeq, Jul 2008],

**Function :**

catalytic activity:Hydrolysis of Pro-|-Xaa >> Ala-|-Xaa in oligopeptides.,function:Cleaves peptide bonds on the C-terminal side of prolyl residues within peptides that are up to approximately 30 amino acids long.,PTM:The N-terminus is blocked.,similarity:Belongs to the peptidase S9A family.,subunit:Monomer.,

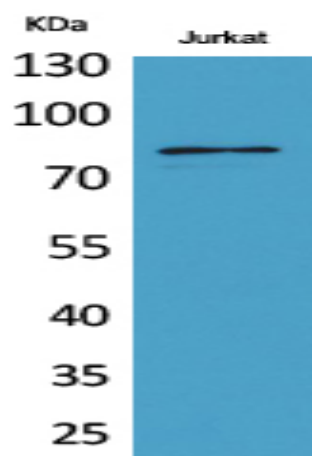
**Subcellular Location :**

nucleus,cytoplasm,membrane,

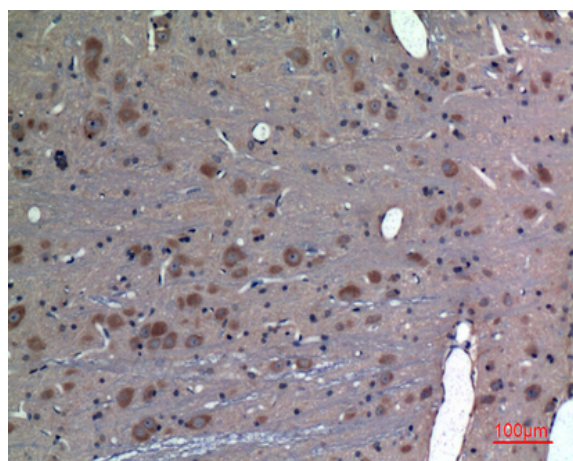
**Expression :**

Blood,Brain,Lymphocyte,Skin,

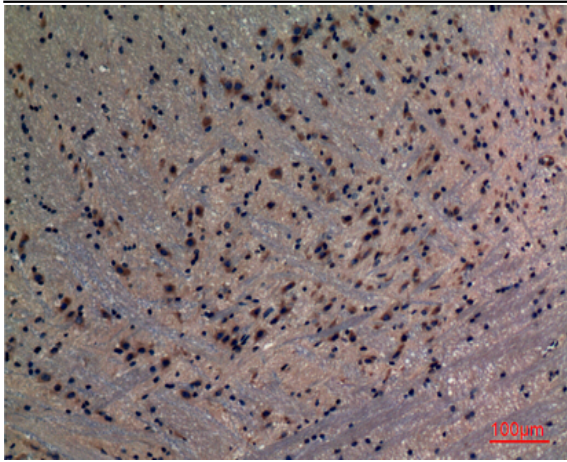
## Products Images



Western Blot analysis of Jurkat cells using PREP Polyclonal Antibody. Secondary antibody(catalog#:RS0002) was diluted at 1:20000



Immunohistochemical analysis of paraffin-embedded rat-brain, antibody was diluted at 1:100



Immunohistochemical analysis of paraffin-embedded mouse-brain, antibody was diluted at 1:100