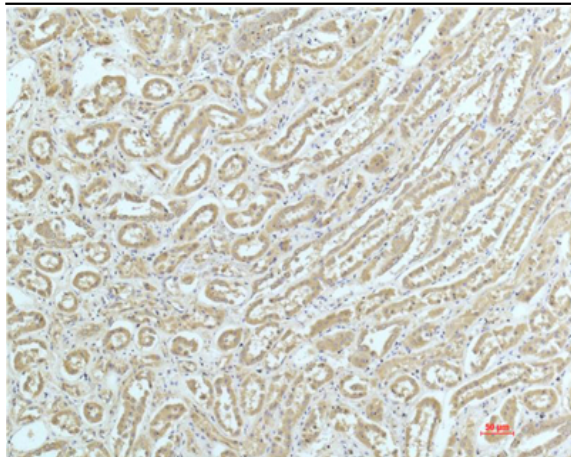


a-actinin Monoclonal Antibody(4A12)

Catalog No :	YM3612
Reactivity :	Human;Rat;Mouse
Applications :	WB;IHC;IF
Target :	Actinin- α 1
Fields :	>>Focal adhesion;>>Adherens junction;>>Tight junction;>>Leukocyte transendothelial migration;>>Regulation of actin cytoskeleton;>>Shigellosis;>>Amoebiasis;>>Viral carcinogenesis;>>Systemic lupus erythematosus
Gene Name :	ACTN1
Protein Name :	ACTN1
Human Gene Id :	87
Human Swiss Prot No :	P12814
Mouse Swiss Prot No :	Q7TPR4
Rat Swiss Prot No :	Q9Z1P2
Immunogen :	Recombinant Protein of a-actinin of ACTN1
Specificity :	a-actinin Monoclonal Antibody(4A12) detects endogenous levels of ACTN1
Formulation :	Liquid in PBS containing 50% glycerol, 0.5% BSA and 0.02% sodium azide.
Source :	Monoclonal, Mouse
Dilution :	IHC 1:200-400, IF ICC 1:200-400, WB 1:500-2000
Purification :	The antibody was affinity-purified from mouse ascites by affinity-chromatography using specific immunogen.

Concentration :	1 mg/ml
Storage Stability :	-15°C to -25°C/1 year(Do not lower than -25°C)
Observed Band :	103kD
Cell Pathway :	Focal adhesion;Adherens_Junction;Adherens_Junction;Leukocyte transendothelial migration;Regulates Actin and Cytoskeleton;Systemic lupus erythematosus;Arrhythmogenic right ventricular cardiomyopathy (A
Background :	Alpha actinins belong to the spectrin gene superfamily which represents a diverse group of cytoskeletal proteins, including the alpha and beta spectrins and dystrophins. Alpha actinin is an actin-binding protein with multiple roles in different cell types. In nonmuscle cells, the cytoskeletal isoform is found along microfilament bundles and adherens-type junctions, where it is involved in binding actin to the membrane. In contrast, skeletal, cardiac, and smooth muscle isoforms are localized to the Z-disc and analogous dense bodies, where they help anchor the myofibrillar actin filaments. This gene encodes a nonmuscle, cytoskeletal, alpha actinin isoform and maps to the same site as the structurally similar erythroid beta spectrin gene. Three transcript variants encoding different isoforms have been found for this gene. [provided by RefSeq, Jul 2008],
Function :	function:F-actin cross-linking protein which is thought to anchor actin to a variety of intracellular structures. This is a bundling protein.,similarity:Belongs to the alpha-actinin family.,similarity:Contains 1 actin-binding domain.,similarity:Contains 2 CH (calponin-homology) domains.,similarity:Contains 2 EF-hand domains.,similarity:Contains 4 spectrin repeats.,subcellular location:Colocalizes with MYOZ2 and PPP3CA at the Z-line of heart and skeletal muscle.,subunit:Homodimer; antiparallel. Interacts with DDN, MYOZ2, PDLIM2, TTID and LPP.,
Subcellular Location :	Cytoplasm, cytoskeleton . Cytoplasm, myofibril, sarcomere, Z line . Cell membrane . Cell junction . Cell projection, ruffle . Colocalizes with MYOZ2 and PPP3CA at the Z-line of heart and skeletal muscle. Colocalizes with PSD in membrane ruffles and central reticular structures. .
Expression :	Colon,Epithelium,Hepatocyte,Neuroblastoma,Placenta,Platelet,Skin,Tumor of tongue,

Products Images



Immunohistochemical analysis of paraffin-embedded Human Kidney Tissue using α -actinin Mouse mAb diluted at 1:200.