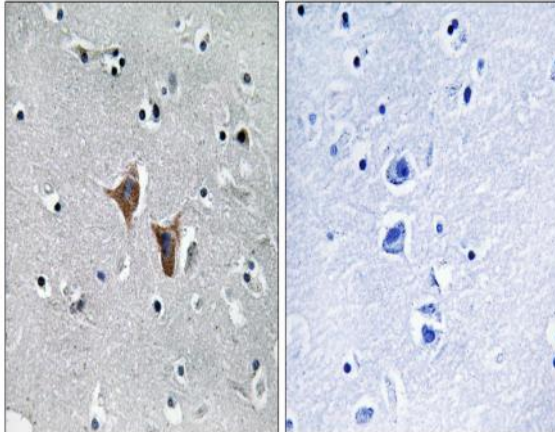


WAVE4 Polyclonal Antibody

Catalog No :	YT4900
Reactivity :	Human;Rat;Mouse;
Applications :	IHC;IF;ELISA
Target :	WAVE4
Gene Name :	WASF4
Protein Name :	Putative Wiskott-Aldrich syndrome protein family member 4
Human Gene Id :	644739
Human Swiss Prot No :	Q8IV90
Immunogen :	The antiserum was produced against synthesized peptide derived from human WASF4. AA range:190-239
Specificity :	WAVE4 Polyclonal Antibody detects endogenous levels of WAVE4 protein.
Formulation :	Liquid in PBS containing 50% glycerol, 0.5% BSA and 0.02% sodium azide.
Source :	Polyclonal, Rabbit,IgG
Dilution :	IHC 1:100 - 1:300. ELISA: 1:10000.. IF 1:50-200
Purification :	The antibody was affinity-purified from rabbit antiserum by affinity-chromatography using epitope-specific immunogen.
Concentration :	1 mg/ml
Storage Stability :	-15°C to -25°C/1 year(Do not lower than -25°C)
Observed Band :	68kD
Background :	WASF4P (WAS protein family member 4, pseudogene) is a pseudogene belonging to the family of genes encoding Wiskott-Aldrich syndrome (WAS)

proteins, which are involved in the transmission of signals to the actin cytoskeleton. Wiskott-Aldrich syndrome is a disease of the immune system. This pseudogene, which is apparently not transcribed, most closely resembles WASF4P encoding the WAS protein family member 2, which is located on chromosome 1.

Products Images



Immunohistochemistry analysis of paraffin-embedded human brain, using WASF4 Antibody. The picture on the right is blocked with the synthesized peptide.