

Rab 26 Polyclonal Antibody

Catalog No :	YT5075
Reactivity :	Human;Mouse;Rat
Applications :	WB;IHC;IF;ELISA
Target :	Rab 26
Gene Name :	RAB26
Protein Name :	Ras-related protein Rab-26
Human Gene Id :	25837
Human Swiss Prot No :	Q9ULW5
Mouse Gene Id :	328778
Mouse Swiss Prot No :	Q504M8
Rat Gene Id :	171111
Rat Swiss Prot No :	P51156
Immunogen :	Synthesized peptide derived from Rab 26 . at AA range: 180-256
Specificity :	Rab 26 Polyclonal Antibody detects endogenous levels of Rab 26 protein.
Formulation :	Liquid in PBS containing 50% glycerol, 0.5% BSA and 0.02% sodium azide.
Source :	Polyclonal, Rabbit,IgG
Dilution :	WB 1:500 - 1:2000. IHC: 1:100-300 ELISA: 1:40000.. IF 1:50-200
Purification :	The antibody was affinity-purified from rabbit antiserum by affinity-chromatography using epitope-specific immunogen.

Concentration : 1 mg/ml

Storage Stability : -15°C to -25°C/1 year(Do not lower than -25°C)

Observed Band : 27kD

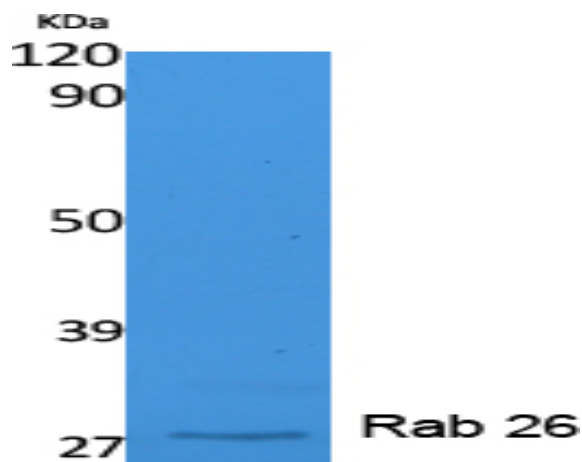
Background : Members of the RAB protein family, including RAB26, are important regulators of vesicular fusion and trafficking. The RAB family of small G proteins regulates intercellular vesicle trafficking, including exocytosis, endocytosis, and recycling (summary by Seki et al., 2000 [PubMed 11043516]).[supplied by OMIM, Nov 2010],

Function : function:Participates in exocrine secretion: regulates the secretion of acinar granules in the parotid gland.,similarity:Belongs to the small GTPase superfamily. Rab family.,tissue specificity:Predominantly expressed in brain.,

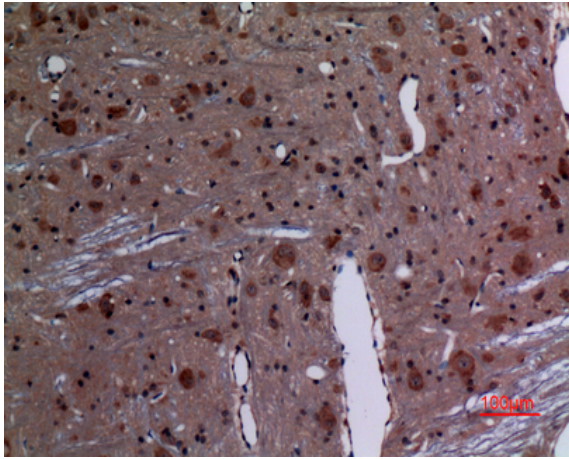
Subcellular Location : Golgi apparatus membrane ; Lipid-anchor ; Cytoplasmic side . Cytoplasmic vesicle, secretory vesicle membrane ; Lipid-anchor ; Cytoplasmic side . Not localized at the plasma membrane (By similarity). Inhibition of S-geranylgeranyl cysteine formation abolishes membrane location. .

Expression : Predominantly expressed in brain.

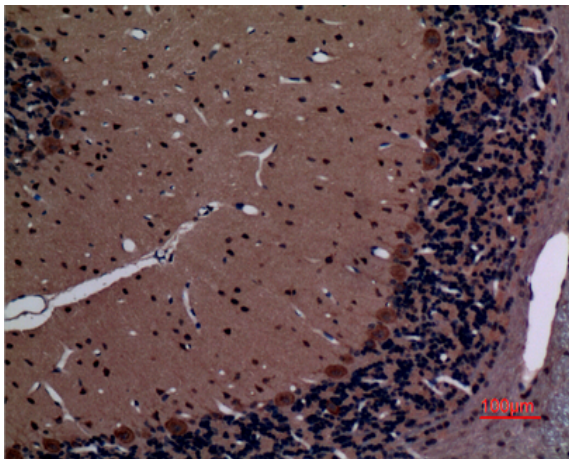
Products Images



Western Blot analysis of extracts from K562 cells, using Rab 26 Polyclonal Antibody. Secondary antibody(catalog#:RS0002) was diluted at 1:20000



Immunohistochemical analysis of paraffin-embedded rat-brain, antibody was diluted at 1:100



Immunohistochemical analysis of paraffin-embedded rat-brain, antibody was diluted at 1:100