

## USP32 Polyclonal Antibody

<b>Catalog No :</b>	YT4835
<b>Reactivity :</b>	Human;Mouse
<b>Applications :</b>	IHC;IF;WB;ELISA
<b>Target :</b>	USP32
<b>Gene Name :</b>	USP32
<b>Protein Name :</b>	Ubiquitin carboxyl-terminal hydrolase 32
<b>Human Gene Id :</b>	84669
<b>Human Swiss Prot No :</b>	Q8NFA0
<b>Immunogen :</b>	The antiserum was produced against synthesized peptide derived from human USP32. AA range:271-320
<b>Specificity :</b>	USP32 Polyclonal Antibody detects endogenous levels of USP32 protein.
<b>Formulation :</b>	Liquid in PBS containing 50% glycerol, 0.5% BSA and 0.02% sodium azide.
<b>Source :</b>	Polyclonal, Rabbit,IgG
<b>Dilution :</b>	WB 1:500-2000 IHC 1:100 - 1:300. ELISA: 1:40000.. IF 1:50-200
<b>Purification :</b>	The antibody was affinity-purified from rabbit antiserum by affinity-chromatography using epitope-specific immunogen.
<b>Concentration :</b>	1 mg/ml
<b>Storage Stability :</b>	-15°C to -25°C/1 year(Do not lower than -25°C)
<b>Observed Band :</b>	180kD
<b>Background :</b>	catalytic activity:Ubiquitin C-terminal thioester + H(2)O = ubiquitin + a thiol.,similarity:Belongs to the peptidase C19 family.,similarity:Contains 1 DUSP

domain.,similarity:Contains 3 EF-hand domains.,

---

**Function :**

catalytic activity:Ubiquitin C-terminal thioester + H(2)O = ubiquitin + a thiol.,similarity:Belongs to the peptidase C19 family.,similarity:Contains 1 DUSP domain.,similarity:Contains 3 EF-hand domains.,

---

**Subcellular Location :**

Membrane ; Lipid-anchor . Golgi apparatus .

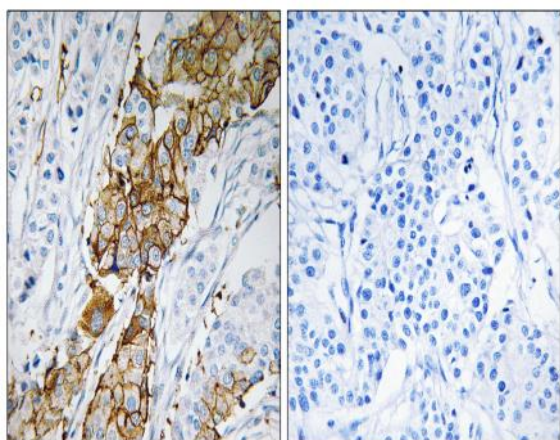
---

**Expression :**

Brain,Epithelium,Peripheral Nervous System,Skin,Testis,Uterus,

---

## Products Images



Immunohistochemistry analysis of paraffin-embedded human breast carcinoma tissue, using USP32 Antibody. The picture on the right is blocked with the synthesized peptide.