

Sox-17 Polyclonal Antibody

Catalog No :	YT5055
Reactivity :	Human;Mouse
Applications :	WB;ELISA;IHC
Target :	Sox-17
Fields :	>>Wnt signaling pathway
Gene Name :	SOX17
Protein Name :	Transcription factor SOX-17
Human Gene Id :	64321
Human Swiss Prot No :	Q9H6I2
Mouse Gene Id :	20671
Mouse Swiss Prot No :	Q61473
Immunogen :	Synthesized peptide derived from Sox-17 . at AA range: 90-170
Specificity :	Sox-17 Polyclonal Antibody detects endogenous levels of Sox-17 protein.
Formulation :	Liquid in PBS containing 50% glycerol, 0.5% BSA and 0.02% sodium azide.
Source :	Polyclonal, Rabbit,IgG
Dilution :	WB 1:500-2000;IHC 1:50-300; ELISA 2000-20000
Purification :	The antibody was affinity-purified from rabbit antiserum by affinity-chromatography using epitope-specific immunogen.
Concentration :	1 mg/ml

Storage Stability : -15°C to -25°C/1 year(Do not lower than -25°C)

Observed Band : 44kD

Cell Pathway : WNT;WNT-T CELL

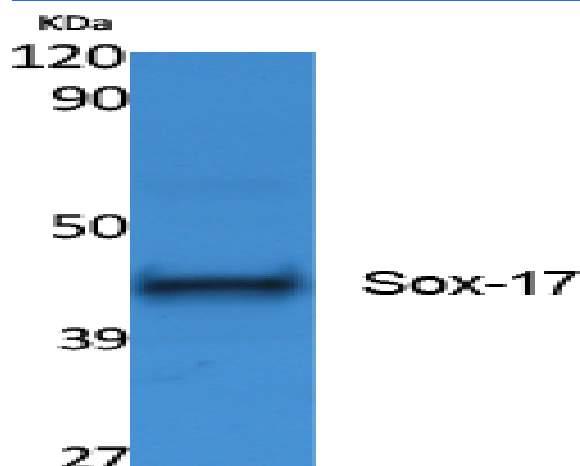
Background : This gene encodes a member of the SOX (SRY-related HMG-box) family of transcription factors involved in the regulation of embryonic development and in the determination of the cell fate. The encoded protein may act as a transcriptional regulator after forming a protein complex with other proteins. [provided by RefSeq, Jul 2008],

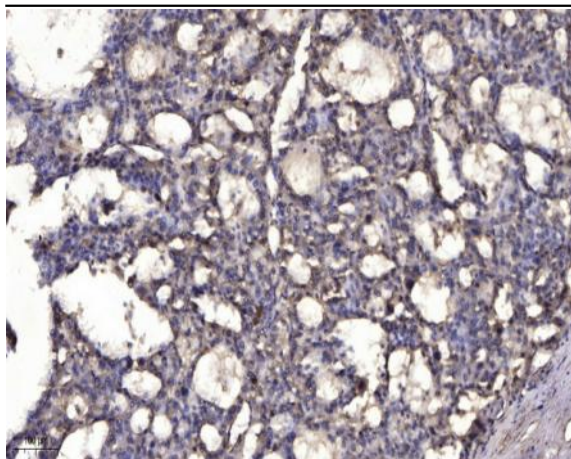
Function : function:Probable transcriptional activator in the premeiotic germ cells. It binds to the sequences 5'-AACAAAT-'3 or 5'-AACAAAG-3'.,similarity:Contains 1 HMG box DNA-binding domain.,tissue specificity:Expressed in adult heart, lung, spleen, testis, ovary, placenta, fetal lung, and kidney. In normal gastrointestinal tract, it is preferentially expressed in esophagus, stomach and small intestine than in colon and rectum.,

Subcellular Location : Nucleus .

Expression : Expressed in adult heart, lung, spleen, testis, ovary, placenta, fetal lung, and kidney. In normal gastrointestinal tract, it is preferentially expressed in esophagus, stomach and small intestine than in colon and rectum.

Products Images





Immunohistochemical analysis of paraffin-embedded human liver cancer. 1, Antibody was diluted at 1:200(4° overnight). 2, Tris-EDTA,pH9.0 was used for antigen retrieval. 3,Secondary antibody was diluted at 1:200(room temperature, 45min).