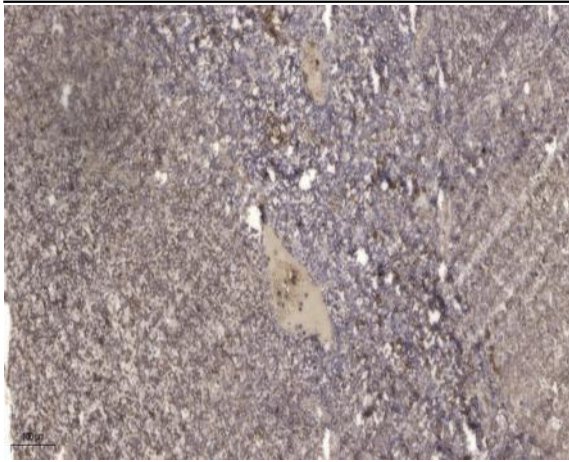


UFD2 Polyclonal Antibody

Catalog No :	YT4818
Reactivity :	Human;Mouse
Applications :	IHC;IF;ELISA
Target :	UFD2
Fields :	>>Ubiquitin mediated proteolysis;>>Protein processing in endoplasmic reticulum
Gene Name :	UBE4B
Protein Name :	Ubiquitin conjugation factor E4 B
Human Gene Id :	10277
Human Swiss Prot No :	O95155
Mouse Gene Id :	63958
Mouse Swiss Prot No :	Q9ES00
Immunogen :	Synthesized peptide derived from the Internal region of human UFD2.
Specificity :	UFD2 Polyclonal Antibody detects endogenous levels of UFD2 protein.
Formulation :	Liquid in PBS containing 50% glycerol, 0.5% BSA and 0.02% sodium azide.
Source :	Polyclonal, Rabbit,IgG
Dilution :	IHC 1:100 - 1:300. ELISA: 1:5000.. IF 1:50-200
Purification :	The antibody was affinity-purified from rabbit antiserum by affinity-chromatography using epitope-specific immunogen.
Concentration :	1 mg/ml

Storage Stability :	<u>-15°C to -25°C/1 year(Do not lower than -25°C)</u>
Molecularweight :	<u>146kD</u>
Cell Pathway :	<u>Ubiquitin mediated proteolysis;</u>
Background :	<u>The modification of proteins with ubiquitin is an important cellular mechanism for targeting abnormal or short-lived proteins for degradation. Ubiquitination involves at least three classes of enzymes: ubiquitin-activating enzymes, or E1s, ubiquitin-conjugating enzymes, or E2s, and ubiquitin-protein ligases, or E3s. This gene encodes an additional conjugation factor, E4, which is involved in multiubiquitin chain assembly. This gene is also the strongest candidate in the neuroblastoma tumor suppressor genes. Alternatively spliced transcript variants encoding distinct isoforms have been found for this gene. [provided by RefSeq, Jul 2008],</u>
Function :	<u>function: Binds to the ubiquitin moieties of preformed conjugates and catalyzes ubiquitin chain assembly in conjunction with E1, E2, and E3.,PTM: Proteolytically cleaved by caspases during apoptosis. Cleaved efficiently at Asp-123 by caspase-6 and granzyme B. Cleaved with approximately 10-fold less efficiency at Asp-109 by caspase-3 and caspase-7.,similarity: Belongs to the ubiquitin conjugation factor E4 family.,similarity: Contains 1 U-box domain.,subunit: Interacts with VCP.,tissue specificity: Highest expression in ovary, testis, heart and skeletal muscle. Expression is low in colon, thymus and peripheral blood leukocytes. Almost undetectable in lung and spleen.,</u>
Subcellular Location :	<u>Cytoplasm . Nucleus .</u>
Expression :	<u>Expressed in differentiated myotubes (at protein level) (PubMed:17369820). Highest expression in ovary, testis, heart and skeletal muscle (PubMed:11802788). Expression is low in colon, thymus and peripheral blood leukocytes (PubMed:11802788). Almost undetectable in lung and spleen (PubMed:11802788).</u>

Products Images



Immunohistochemical analysis of paraffin-embedded human tonsil. 1, Antibody was diluted at 1:200(4 ° overnight). 2, Tris-EDTA,pH9.0 was used for antigen retrieval. 3,Secondary antibody was diluted at 1:200(room temperature, 45min).