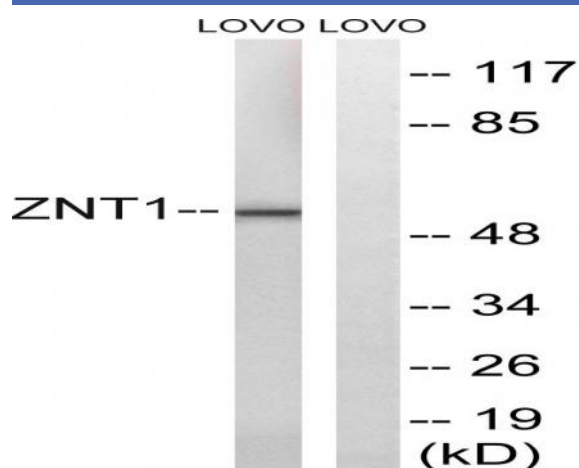


ZnT-1 Polyclonal Antibody

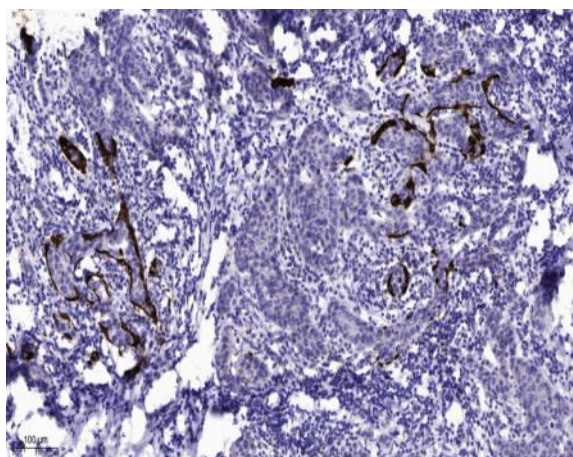
Catalog No :	YT4987
Reactivity :	Human;Rat;Mouse;
Applications :	WB;IHC;IF;ELISA
Target :	ZnT-1
Fields :	>>Mineral absorption
Gene Name :	SLC30A1
Protein Name :	Zinc transporter 1
Human Gene Id :	7779
Human Swiss Prot No :	Q9Y6M5
Mouse Swiss Prot No :	Q60738
Immunogen :	The antiserum was produced against synthesized peptide derived from human SLC30A1. AA range:201-250
Specificity :	ZnT-1 Polyclonal Antibody detects endogenous levels of ZnT-1 protein.
Formulation :	Liquid in PBS containing 50% glycerol, 0.5% BSA and 0.02% sodium azide.
Source :	Polyclonal, Rabbit,IgG
Dilution :	WB 1:500 - 1:2000. IHC 1:100 - 1:300. ELISA: 1:5000.. IF 1:50-200
Purification :	The antibody was affinity-purified from rabbit antiserum by affinity-chromatography using epitope-specific immunogen.
Concentration :	1 mg/ml
Storage Stability :	-15°C to -25°C/1 year(Do not lower than -25°C)

Observed Band : 55kD**Background :** function:May be involved in zinc transport out of the cell.,similarity:Belongs to the cation diffusion facilitator (CDF) transporter (TC 2.A.4) family. SLC30A subfamily.,subunit:Multimer.,**Function :** function:May be involved in zinc transport out of the cell.,similarity:Belongs to the cation diffusion facilitator (CDF) transporter (TC 2.A.4) family. SLC30A subfamily.,subunit:Multimer.,**Subcellular Location :** Cell membrane ; Multi-pass membrane protein .**Expression :** Prostate cancer,

Products Images



Western blot analysis of lysates from LOVO cells, using SLC30A1 Antibody. The lane on the right is blocked with the synthesized peptide.



Immunohistochemical analysis of paraffin-embedded human Breast cancer. 1, Antibody was diluted at 1:200(4° overnight). 2, Tris-EDTA,pH9.0 was used for antigen retrieval. 3,Secondary antibody was diluted at 1:200(room temperature, 45min).