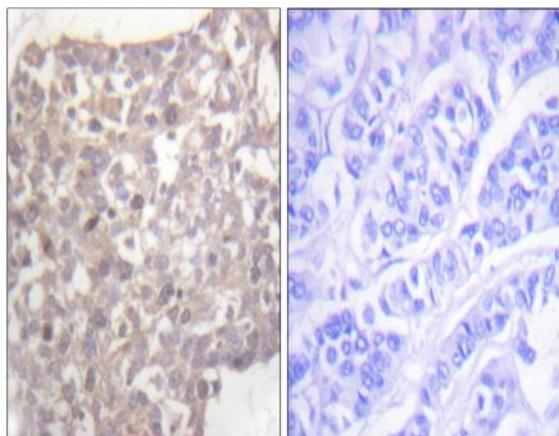


## Tubulin $\gamma$ Polyclonal Antibody

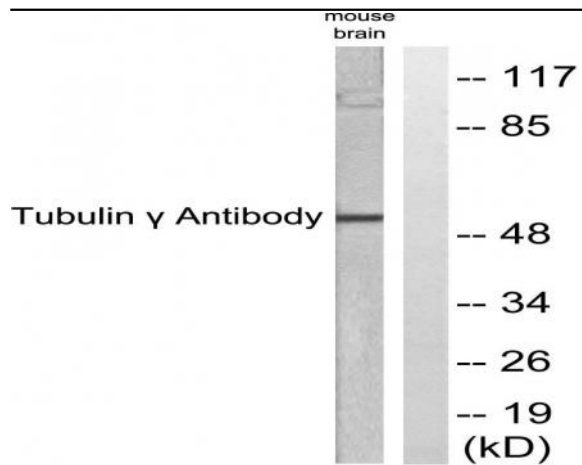
<b>Catalog No :</b>	YT4781
<b>Reactivity :</b>	Human;Mouse;Rat
<b>Applications :</b>	WB;IHC;IF;ELISA
<b>Target :</b>	Tubulin Gamma
<b>Fields :</b>	>>Human papillomavirus infection
<b>Gene Name :</b>	TUBG1
<b>Protein Name :</b>	Tubulin gamma-1 chain
<b>Human Gene Id :</b>	7283
<b>Human Swiss Prot No :</b>	P23258
<b>Mouse Gene Id :</b>	103733
<b>Mouse Swiss Prot No :</b>	P83887
<b>Rat Gene Id :</b>	252921
<b>Rat Swiss Prot No :</b>	P83888
<b>Immunogen :</b>	The antiserum was produced against synthesized peptide derived from human Tubulin gamma. AA range:386-435
<b>Specificity :</b>	Tubulin $\gamma$ Polyclonal Antibody detects endogenous levels of Tubulin $\gamma$ protein.
<b>Formulation :</b>	Liquid in PBS containing 50% glycerol, 0.5% BSA and 0.02% sodium azide.
<b>Source :</b>	Polyclonal, Rabbit,IgG
<b>Dilution :</b>	WB 1:500 - 1:2000. IHC 1:100 - 1:300. ELISA: 1:5000.. IF 1:50-200

<b>Purification :</b>	The antibody was affinity-purified from rabbit antiserum by affinity-chromatography using epitope-specific immunogen.
<b>Concentration :</b>	1 mg/ml
<b>Storage Stability :</b>	-15°C to -25°C/1 year(Do not lower than -25°C)
<b>Observed Band :</b>	51kD
<b>Cell Pathway :</b>	Protein_Acetylation
<b>Background :</b>	This gene encodes a member of the tubulin superfamily. The encoded protein localizes to the centrosome where it binds to microtubules as part of a complex referred to as the gamma-tubulin ring complex. The protein mediates microtubule nucleation and is required for microtubule formation and progression of the cell cycle. A pseudogene of this gene is found on chromosome 7. [provided by RefSeq, Jan 2009],
<b>Function :</b>	function:Tubulin is the major constituent of microtubules. Gamma tubulin is found at microtubule organizing centers (MTOC) such as the spindle poles or the centrosome, suggesting that it is involved in the minus-end nucleation of microtubule assembly.,mass spectrometry: PubMed:11840567,similarity:Belongs to the tubulin family.,subunit:Interacts with GCP2 and GCP3. Interacts with B9D2.,
<b>Subcellular Location :</b>	Cytoplasm, cytoskeleton, microtubule organizing center, centrosome . Cytoplasm, cytoskeleton, spindle . Localizes to mitotic spindle microtubules. .
<b>Expression :</b>	Mammary cancer, Skin,

## Products Images



Immunohistochemistry analysis of paraffin-embedded human breast carcinoma tissue, using Tubulin gamma Antibody. The picture on the right is blocked with the synthesized peptide.



Western blot analysis of lysates from mouse brain, using Tubulin gamma Antibody. The lane on the right is blocked with the synthesized peptide.