

## WDHD1 Polyclonal Antibody

<b>Catalog No :</b>	YT4902
<b>Reactivity :</b>	Human;Rat;Mouse;
<b>Applications :</b>	WB;IHC;IF;ELISA
<b>Target :</b>	WDHD1
<b>Gene Name :</b>	WDHD1
<b>Protein Name :</b>	WD repeat and HMG-box DNA-binding protein 1
<b>Human Gene Id :</b>	11169
<b>Human Swiss Prot No :</b>	O75717
<b>Mouse Swiss Prot No :</b>	P59328
<b>Immunogen :</b>	The antiserum was produced against synthesized peptide derived from human WDHD1. AA range:721-770
<b>Specificity :</b>	WDHD1 Polyclonal Antibody detects endogenous levels of WDHD1 protein.
<b>Formulation :</b>	Liquid in PBS containing 50% glycerol, 0.5% BSA and 0.02% sodium azide.
<b>Source :</b>	Polyclonal, Rabbit,IgG
<b>Dilution :</b>	WB 1:500 - 1:2000. IHC 1:100 - 1:300. ELISA: 1:10000.. IF 1:50-200
<b>Purification :</b>	The antibody was affinity-purified from rabbit antiserum by affinity-chromatography using epitope-specific immunogen.
<b>Concentration :</b>	1 mg/ml
<b>Storage Stability :</b>	-15°C to -25°C/1 year(Do not lower than -25°C)
<b>Observed Band :</b>	126kD

## Background :

The protein encoded by this gene contains multiple N-terminal WD40 domains and a C-terminal high mobility group (HMG) box. WD40 domains are found in a variety of eukaryotic proteins and may function as adaptor/regulatory modules in signal transduction, pre-mRNA processing and cytoskeleton assembly. HMG boxes are found in many eukaryotic proteins involved in chromatin assembly, transcription and replication. Alternative splicing results in two transcript variants encoding different isoforms. [provided by RefSeq, Jul 2008],

## Function :

caution:The sequence shown here is derived from an Ensembl automatic analysis pipeline and should be considered as preliminary data.,function: Binds DNA with high affinity. May also be involved in protein-protein interactions.,PTM: Phosphorylated upon DNA damage, probably by ATM or ATR.,similarity: Contains 1 HMG box DNA-binding domain.,similarity: Contains 7 WD repeats.,

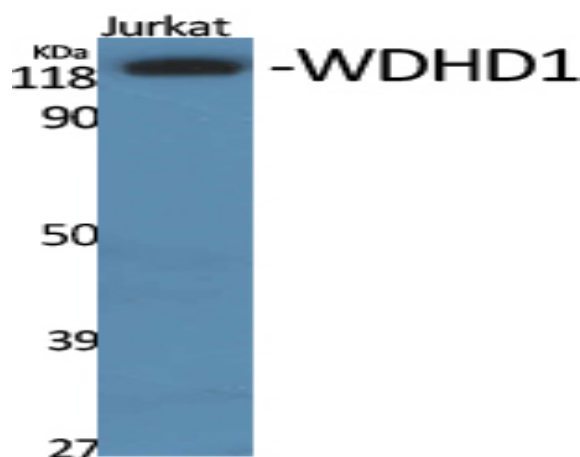
## Subcellular Location :

Nucleus, nucleoplasm .

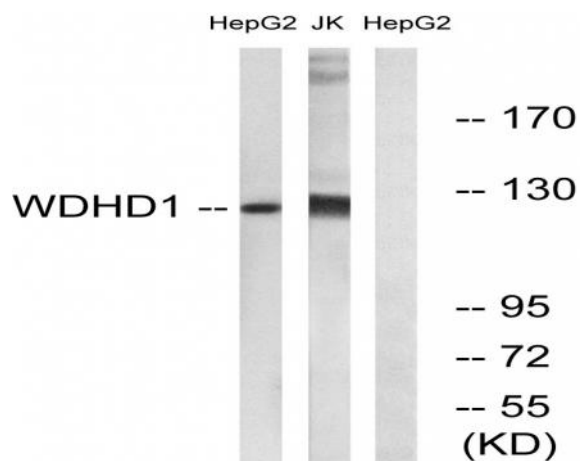
## Expression :

Embryonal rhabdomyosarcoma, Epithelium, Fetal brain, Liver, Ski

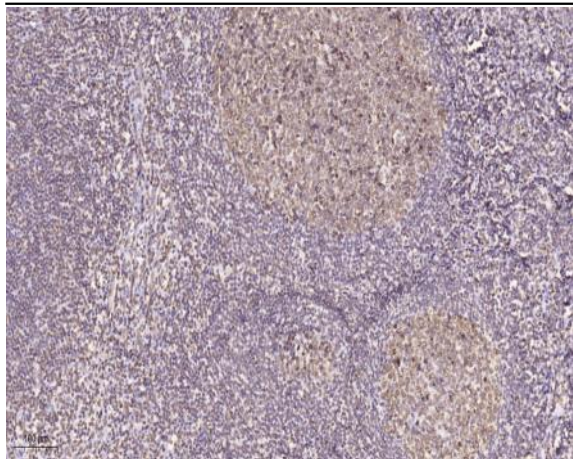
## Products Images



Western Blot analysis of various cells using WDHD1 Polyclonal Antibody. Secondary antibody(catalog#:RS0002) was diluted at 1:20000



Western blot analysis of lysates from Jurkat and HepG2 cells, using WDHD1 Antibody. The lane on the right is blocked with the synthesized peptide.



Immunohistochemical analysis of paraffin-embedded human tonsil. 1, Tris-EDTA, pH 9.0 was used for antigen retrieval. 2 Antibody was diluted at 1:200 (4° overnight). 3, Secondary antibody was diluted at 1:200 (room temperature, 45 min).