

USP13 Polyclonal Antibody

Catalog No :	YT4829
Reactivity :	Human;Mouse
Applications :	WB;IHC;IF;ELISA
Target :	USP13
Gene Name :	USP13
Protein Name :	Ubiquitin carboxyl-terminal hydrolase 13
Human Gene Id :	8975
Human Swiss Prot No :	Q92995
Mouse Gene Id :	72607
Mouse Swiss Prot No :	Q5BKP2
Immunogen :	The antiserum was produced against synthesized peptide derived from human USP13. AA range:811-860
Specificity :	USP13 Polyclonal Antibody detects endogenous levels of USP13 protein.
Formulation :	Liquid in PBS containing 50% glycerol, 0.5% BSA and 0.02% sodium azide.
Source :	Polyclonal, Rabbit,IgG
Dilution :	WB 1:500 - 1:2000. IHC 1:100 - 1:300. ELISA: 1:40000.. IF 1:50-200
Purification :	The antibody was affinity-purified from rabbit antiserum by affinity-chromatography using epitope-specific immunogen.
Concentration :	1 mg/ml
Storage Stability :	-15°C to -25°C/1 year(Do not lower than -25°C)

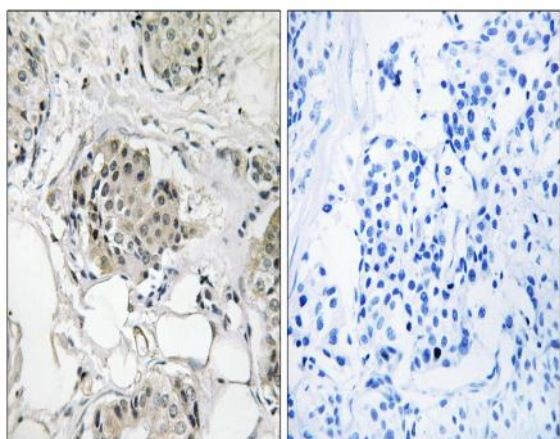
Observed Band : 97kD

Background : catalytic activity:Ubiquitin C-terminal thioester + H(2)O = ubiquitin + a thiol.,similarity:Belongs to the peptidase C19 family.,similarity:Contains 1 UBP-type zinc finger.,similarity:Contains 2 UBA domains.,tissue specificity:Highly expressed in ovary and testes.,

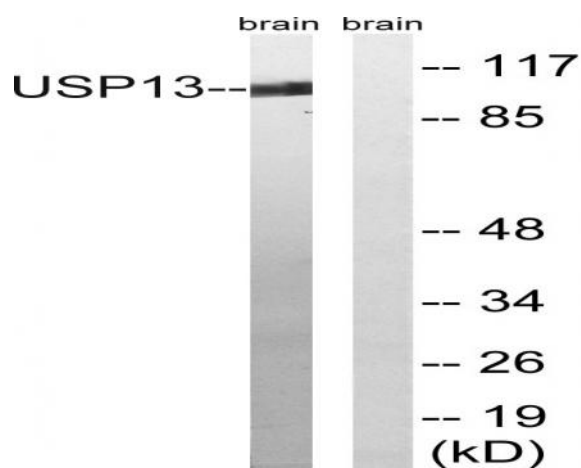
Function : catalytic activity:Ubiquitin C-terminal thioester + H(2)O = ubiquitin + a thiol.,similarity:Belongs to the peptidase C19 family.,similarity:Contains 1 UBP-type zinc finger.,similarity:Contains 2 UBA domains.,tissue specificity:Highly expressed in ovary and testes.,

Expression : Highly expressed in ovary and testes.

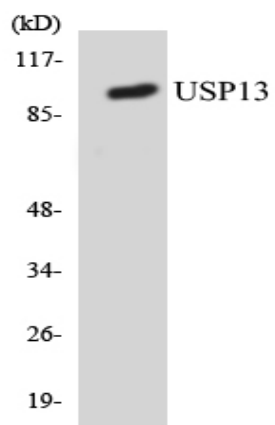
Products Images



Immunohistochemistry analysis of paraffin-embedded human breast carcinoma tissue, using USP13 Antibody. The picture on the right is blocked with the synthesized peptide.



Western blot analysis of lysates from mouse brain, using USP13 Antibody. The lane on the right is blocked with the synthesized peptide.



Western blot analysis of the lysates from RAW264.7 cells using USP13 antibody.