

USP11 Polyclonal Antibody

| | |
|------------------------------|---|
| Catalog No : | YT4828 |
| Reactivity : | Human;Mouse;Rat |
| Applications : | IF;WB;ELISA |
| Target : | USP11 |
| Gene Name : | USP11 |
| Protein Name : | Ubiquitin carboxyl-terminal hydrolase 11 |
| Human Gene Id : | 8237 |
| Human Swiss Prot No : | P51784 |
| Mouse Gene Id : | 236733 |
| Mouse Swiss Prot No : | Q99K46 |
| Immunogen : | Synthesized peptide derived from the Internal region of human USP11. |
| Specificity : | USP11 Polyclonal Antibody detects endogenous levels of USP11 protein. |
| Formulation : | Liquid in PBS containing 50% glycerol, 0.5% BSA and 0.02% sodium azide. |
| Source : | Polyclonal, Rabbit,IgG |
| Dilution : | IF 1:50-200 WB 1:500 - 1:2000. ELISA: 1:20000. Not yet tested in other applications. |
| Purification : | The antibody was affinity-purified from rabbit antiserum by affinity-chromatography using epitope-specific immunogen. |
| Concentration : | 1 mg/ml |
| Storage Stability : | -15°C to -25°C/1 year(Do not lower than -25°C) |

Observed Band : 105kD

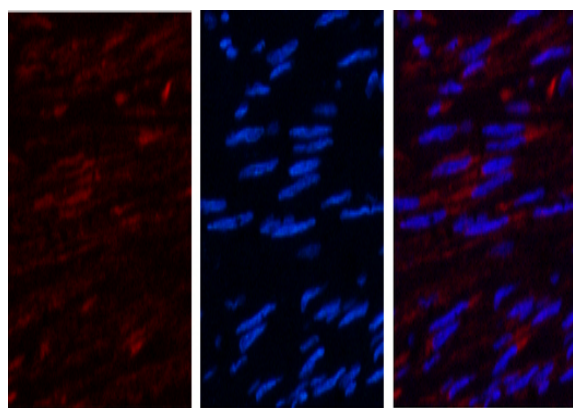
Background : Protein ubiquitination controls many intracellular processes, including cell cycle progression, transcriptional activation, and signal transduction. This dynamic process, involving ubiquitin conjugating enzymes and deubiquitinating enzymes, adds and removes ubiquitin. Deubiquitinating enzymes are cysteine proteases that specifically cleave ubiquitin from ubiquitin-conjugated protein substrates. This gene encodes a deubiquitinating enzyme which lies in a gene cluster on chromosome Xp11.23 [provided by RefSeq, Jul 2008],

Function : catalytic activity:Ubiquitin C-terminal thioester + H(2)O = ubiquitin + a thiol.,similarity:Belongs to the peptidase C19 family.,similarity:Contains 1 DUSP domain.,subunit:Interacts with RANBP9/RANBPM.,

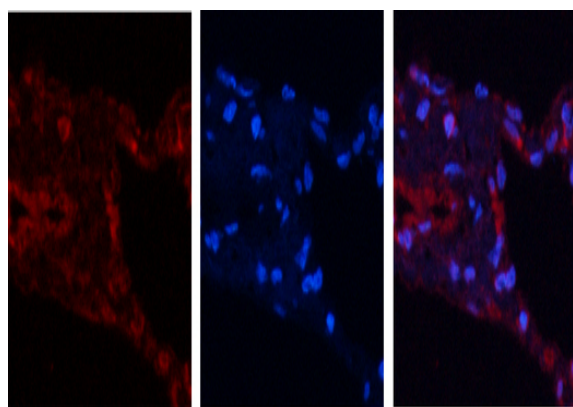
Subcellular Location : Nucleus . Cytoplasm . Chromosome . Predominantly nuclear (PubMed:12084015, PubMed:15314155). Associates with chromatin (PubMed:20601937, PubMed:20233726). .

Expression : Brain,Fetal brain,Muscle,Retina,

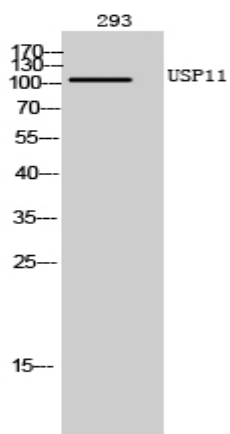
Products Images



Immunofluorescence analysis of human-uterus tissue. 1, USP11 Polyclonal Antibody (red) was diluted at 1:200 (4° overnight). 2, Cy3 labeled Secondary antibody was diluted at 1:300 (room temperature, 50min). 3, Picture B: DAPI (blue) 10min. Picture A: Target. Picture B: DAPI. Picture C: merge of A+B



Immunofluorescence analysis of human-lung tissue. 1, USP11 Polyclonal Antibody (red) was diluted at 1:200 (4° overnight). 2, Cy3 labeled Secondary antibody was diluted at 1:300 (room temperature, 50min). 3, Picture B: DAPI (blue) 10min. Picture A: Target. Picture B: DAPI. Picture C: merge of A+B



Western Blot analysis of 293 cells using USP11 Polyclonal Antibody. Secondary antibody(catalog#:RS0002) was diluted at 1:20000 cells nucleus extracted by Minute TM Cytoplasmic and Nuclear Fractionation kit (SC-003, Inventbiotech, MN, USA).