

UROC28 Polyclonal Antibody

Catalog No :	YT4824
Reactivity :	Human
Applications :	WB;IHC;IF;ELISA
Target :	UROC28
Gene Name :	PBOV1
Protein Name :	Prostate and breast cancer overexpressed gene 1 protein
Human Gene Id :	59351
Human Swiss Prot No :	Q9GZY1
Immunogen :	The antiserum was produced against synthesized peptide derived from human PBOV1. AA range:31-80
Specificity :	UROC28 Polyclonal Antibody detects endogenous levels of UROC28 protein.
Formulation :	Liquid in PBS containing 50% glycerol, 0.5% BSA and 0.02% sodium azide.
Source :	Polyclonal, Rabbit,IgG
Dilution :	WB 1:500 - 1:2000. IHC 1:100 - 1:300. IF 1:200 - 1:1000. ELISA: 1:40000. Not yet tested in other applications.
Purification :	The antibody was affinity-purified from rabbit antiserum by affinity-chromatography using epitope-specific immunogen.
Concentration :	1 mg/ml
Storage Stability :	-15°C to -25°C/1 year(Do not lower than -25°C)
Observed Band :	19kD
Background :	This intronless gene encodes a protein of unknown function. Its expression is up-

regulated in some types of cancer, including prostate, breast, and bladder cancer. [provided by RefSeq, Aug 2011],

Function :

tissue specificity: Expressed in colon, prostate, small intestine, testis and spleen, with lower expression in thymus, ovary, and peripheral blood leukocytes. Up-regulated expression in prostate, breast, and bladder cancer, but not in lung and colon cancer.,

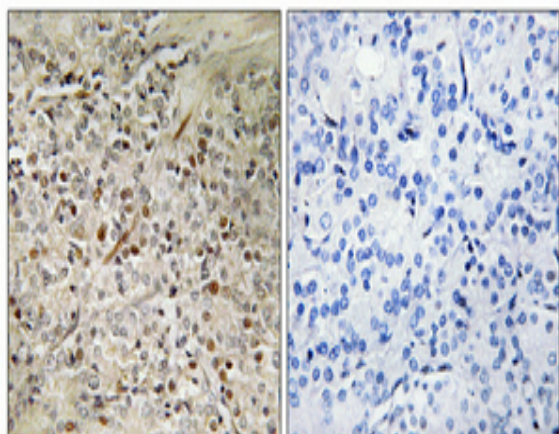
Subcellular Location :

Cytoplasm . Nucleus .

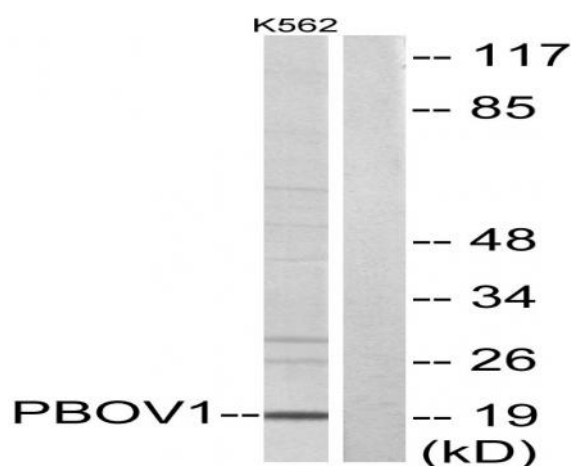
Expression :

Expressed in colon, prostate, small intestine, testis and spleen, with lower expression in thymus, ovary, and peripheral blood leukocytes. Up-regulated expression in prostate, breast, and bladder cancer, but not in lung and colon cancer.

Products Images



Immunohistochemical analysis of paraffin-embedded Human prostate cancer. Antibody was diluted at 1:100 (4° overnight). High-pressure and temperature Tris-EDTA, pH 8.0 was used for antigen retrieval. Negative control (right) obtained from antibody was pre-absorbed by immunogen peptide.



Western blot analysis of lysates from K562 cells, using PBOV1 Antibody. The lane on the right is blocked with the synthesized peptide.