

## UMP-CMP Kinase Polyclonal Antibody

<b>Catalog No :</b>	YT4821
<b>Reactivity :</b>	Human;Mouse;Rat
<b>Applications :</b>	WB;IHC;IF;ELISA
<b>Target :</b>	UMP-CMP Kinase
<b>Fields :</b>	>>Pyrimidine metabolism;>>Drug metabolism - other enzymes;>>Metabolic pathways;>>Nucleotide metabolism;>>Biosynthesis of cofactors
<b>Gene Name :</b>	CMPK1
<b>Protein Name :</b>	UMP-CMP kinase
<b>Human Gene Id :</b>	51727
<b>Human Swiss Prot No :</b>	P30085
<b>Mouse Gene Id :</b>	66588
<b>Mouse Swiss Prot No :</b>	Q9DBP5
<b>Rat Gene Id :</b>	298410
<b>Rat Swiss Prot No :</b>	Q4KM73
<b>Immunogen :</b>	The antiserum was produced against synthesized peptide derived from human KCY. AA range:1-50
<b>Specificity :</b>	UMP-CMP Kinase Polyclonal Antibody detects endogenous levels of UMP-CMP Kinase protein.
<b>Formulation :</b>	Liquid in PBS containing 50% glycerol, 0.5% BSA and 0.02% sodium azide.
<b>Source :</b>	Polyclonal, Rabbit,IgG
<b>Dilution :</b>	WB 1:500 - 1:2000. IHC 1:100 - 1:300. IF 1:200 - 1:1000. ELISA: 1:10000. Not

yet tested in other applications.

---

**Purification :** The antibody was affinity-purified from rabbit antiserum by affinity-chromatography using epitope-specific immunogen.

---

**Concentration :** 1 mg/ml

---

**Storage Stability :** -15°C to -25°C/1 year(Do not lower than -25°C)

---

**Observed Band :** 22kD

---

**Cell Pathway :** Pyrimidine metabolism;

---

**Background :** This gene encodes one of the enzymes required for cellular nucleic acid biosynthesis. This enzyme catalyzes the transfer of a phosphate group from ATP to CMP, UMP, or dCMP, to form the corresponding diphosphate nucleotide. Alternate splicing results in both coding and non-coding transcript variants. [provided by RefSeq, Feb 2012],

---

**Function :** catalytic activity:ATP + (d)CMP = ADP + (d)CDP.,cofactor:Magnesium.,function:Catalyzes specific phosphoryl transfer from ATP to UMP and CMP.,similarity:Belongs to the adenylate kinase family.,subcellular location:Mainly nuclear.,tissue specificity:Ubiquitously expressed.,

---

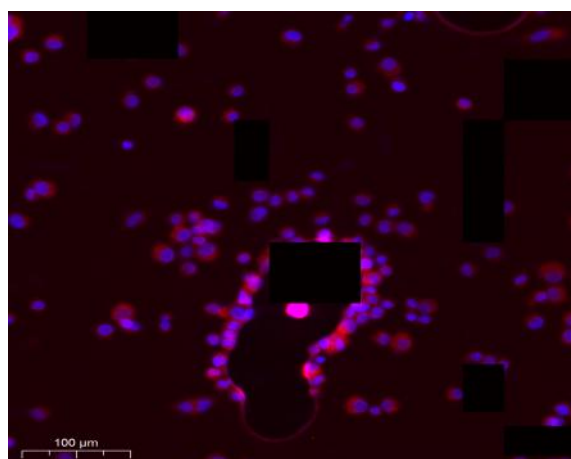
**Subcellular Location :** Nucleus . Cytoplasm . Predominantly cytoplasmic, less than 15% nuclear. .

---

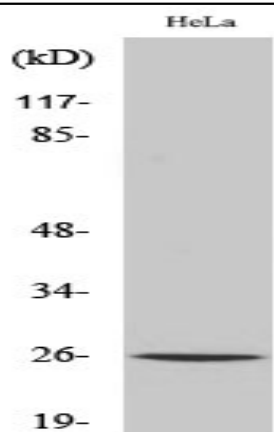
**Expression :** Ubiquitously expressed.

---

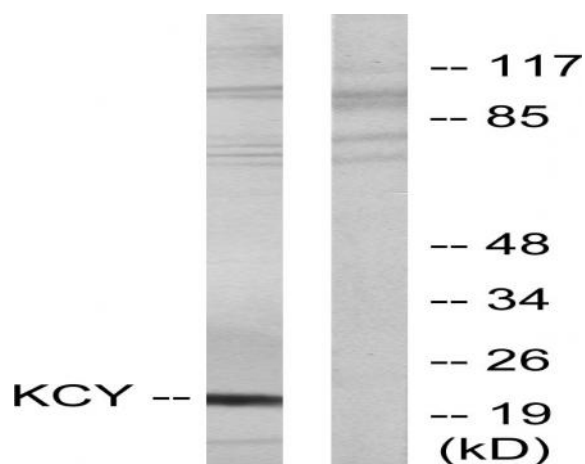
## Products Images



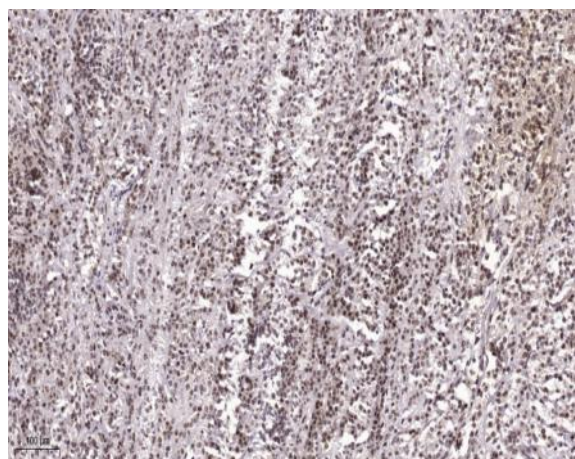
Immunofluorescence analysis of SiHa cell. 1,primary Antibody was diluted at 1:100(4°C overnight). 2, Goat Anti Rabbit IgG (H&L) - AFluor 594 Secondary antibody(catalog No: RS3611) was diluted at 1:500(room temperature, 50min).



Western Blot analysis of various cells using UMP-CMP Kinase Polyclonal Antibody diluted at 1:500. Secondary antibody(catalog#:RS0002) was diluted at 1:20000



Western blot analysis of lysates from HeLa cells, using KCY Antibody. The lane on the right is blocked with the synthesized peptide.



Immunohistochemical analysis of paraffin-embedded human Colon cancer. 1, Antibody was diluted at 1:200(4° overnight). 2, Tris-EDTA,pH9.0 was used for antigen retrieval. 3,Secondary antibody was diluted at 1:200(room temperature, 45min).