

**UBE3C Polyclonal Antibody**

<b>Catalog No :</b>	YT4802
<b>Reactivity :</b>	Human;Rat;Mouse;
<b>Applications :</b>	WB;ELISA
<b>Target :</b>	UBE3C
<b>Fields :</b>	>>Ubiquitin mediated proteolysis
<b>Gene Name :</b>	UBE3C
<b>Protein Name :</b>	Ubiquitin-protein ligase E3C
<b>Human Gene Id :</b>	148581
<b>Human Swiss Prot No :</b>	Q15386
<b>Mouse Swiss Prot No :</b>	Q80U95
<b>Immunogen :</b>	Synthesized peptide derived from the Internal region of human UBE3C.
<b>Specificity :</b>	UBE3C Polyclonal Antibody detects endogenous levels of UBE3C protein.
<b>Formulation :</b>	Liquid in PBS containing 50% glycerol, 0.5% BSA and 0.02% sodium azide.
<b>Source :</b>	Polyclonal, Rabbit,IgG
<b>Dilution :</b>	WB 1:500 - 1:2000. ELISA: 1:10000. Not yet tested in other applications.
<b>Purification :</b>	The antibody was affinity-purified from rabbit antiserum by affinity-chromatography using epitope-specific immunogen.
<b>Concentration :</b>	1 mg/ml
<b>Storage Stability :</b>	-15°C to -25°C/1 year(Do not lower than -25°C)

**Observed Band :** 125kD

**Cell Pathway :** Ubiquitin mediated proteolysis;

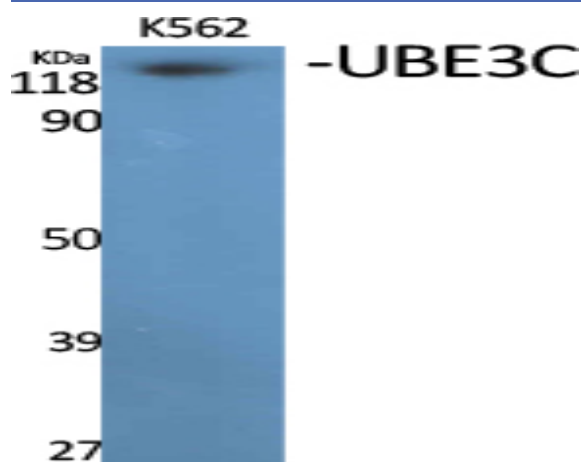
**Background :** function:E3 ubiquitin-protein ligase that accepts ubiquitin from the E2 ubiquitin-conjugating enzyme UBE2D1 in the form of a thioester and then directly transfers the ubiquitin to targeted substrates. It can target itself for ubiquitination in vitro and may promote its own degradation in vivo.,miscellaneous:A cysteine residue is required for ubiquitin-thioester formation.,pathway:Protein modification; protein ubiquitination.,similarity:Contains 1 HECT (E6AP-type E3 ubiquitin-protein ligase) domain.,similarity:Contains 1 IQ domain.,subunit:Interacts with 26S proteasomes. Binds CAND2.,tissue specificity:Highly expressed in skeletal muscle. Detected at much lower levels in kidney and pancreas.,

**Function :** function:E3 ubiquitin-protein ligase that accepts ubiquitin from the E2 ubiquitin-conjugating enzyme UBE2D1 in the form of a thioester and then directly transfers the ubiquitin to targeted substrates. It can target itself for ubiquitination in vitro and may promote its own degradation in vivo.,miscellaneous:A cysteine residue is required for ubiquitin-thioester formation.,pathway:Protein modification; protein ubiquitination.,similarity:Contains 1 HECT (E6AP-type E3 ubiquitin-protein ligase) domain.,similarity:Contains 1 IQ domain.,subunit:Interacts with 26S proteasomes. Binds CAND2.,tissue specificity:Highly expressed in skeletal muscle. Detected at much lower levels in kidney and pancreas.,

**Subcellular Location :** proteasome complex,intracellular,nucleus,cytoplasm,

**Expression :** Highly expressed in skeletal muscle. Detected at much lower levels in kidney and pancreas.

## Products Images



Western Blot analysis of various cells using UBE3C Polyclonal Antibody. Secondary antibody(catalog#:RS0002) was diluted at 1:20000 cells nucleus extracted by Minute TM Cytoplasmic and Nuclear Fractionation kit (SC-003, Inventbiotech, MN, USA).



Western Blot analysis of HuvEc cells using UBE3C Polyclonal Antibody. Secondary antibody(catalog#:RS0002) was diluted at 1:20000 cells nucleus extracted by Minute TM Cytoplasmic and Nuclear Fractionation kit (SC-003, Inventbiotech, MN, USA).