

TDAG51 Polyclonal Antibody

Catalog No :	YT4590
Reactivity :	Human;Mouse;Rat
Applications :	WB;ELISA
Target :	TDAG51
Gene Name :	PHLDA1
Protein Name :	Pleckstrin homology-like domain family A member 1
Human Gene Id :	22822
Human Swiss Prot No :	Q8WV24
Mouse Gene Id :	21664
Mouse Swiss Prot No :	Q62392
Rat Swiss Prot No :	Q9QZA1
Immunogen :	The antiserum was produced against synthesized peptide derived from human PHLA1. AA range:271-320
Specificity :	TDAG51 Polyclonal Antibody detects endogenous levels of TDAG51 protein.
Formulation :	Liquid in PBS containing 50% glycerol, 0.5% BSA and 0.02% sodium azide.
Source :	Polyclonal, Rabbit,IgG
Dilution :	WB 1:500 - 1:2000. ELISA: 1:10000. Not yet tested in other applications.
Purification :	The antibody was affinity-purified from rabbit antiserum by affinity-chromatography using epitope-specific immunogen.
Concentration :	1 mg/ml

Storage Stability : -15°C to -25°C/1 year(Do not lower than -25°C)

Observed Band : 40kD

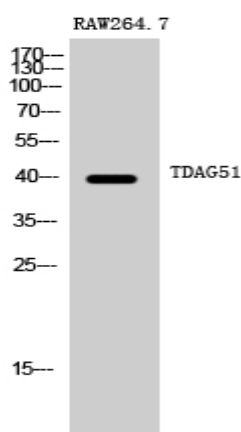
Background : This gene encodes an evolutionarily conserved proline-histidine rich nuclear protein. The encoded protein may play an important role in the anti-apoptotic effects of insulin-like growth factor-1. [provided by RefSeq, Jul 2008],

Function : function:Seems to be involved in regulation of apoptosis. May be involved in detachment-mediated programmed cell death. May mediate apoptosis during neuronal development. May be involved in regulation of anti-apoptotic effects of IGF1. May be involved in translational regulation.,induction:Induced by homocysteine and other ER stress-inducing reagents. Induced by phorbol ester (TPA)/ionomycin, and stimulation of the T-cell receptor (TCR) complex in T-cells.,similarity:Contains 1 PH domain.,subcellular location:Colocalizes with intracellular vesicles.,subunit:Interacts with RPL14, EIF3S7 and PABPC4.,tissue specificity:Widely expressed with highest levels in pancreas. Strongly expressed by benign melanocytic nevi, and progressively reduced expressed in primary and metastatic melanomas (at protein level),

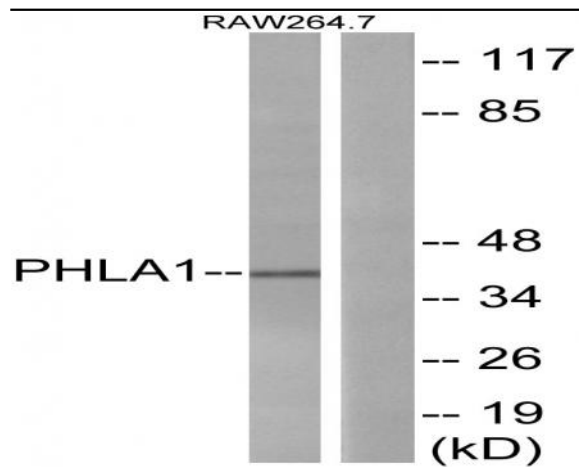
Subcellular Location : Cytoplasm . Cytoplasmic vesicle . Nucleus, nucleolus . Colocalizes with intracellular vesicles. .

Expression : Widely expressed with highest levels in pancreas. Strongly expressed by benign melanocytic nevi, and progressively reduced expressed in primary and metastatic melanomas (at protein level).

Products Images



Western Blot analysis of RAW264.7 cells using TDAG51 Polyclonal Antibody



Western blot analysis of lysates from RAW264.7 cells, using PHLA1 Antibody. The lane on the right is blocked with the synthesized peptide.