

TSA-1 Polyclonal Antibody

| | |
|------------------------------|---|
| Catalog No : | YT4757 |
| Reactivity : | Human;Mouse |
| Applications : | IF;ELISA |
| Target : | TSA-1 |
| Gene Name : | LY6E |
| Protein Name : | Lymphocyte antigen 6E |
| Human Gene Id : | 4061 |
| Human Swiss Prot No : | Q16553 |
| Mouse Swiss Prot No : | Q64253 |
| Immunogen : | The antiserum was produced against synthesized peptide derived from human LY6E. AA range:17-66 |
| Specificity : | TSA-1 Polyclonal Antibody detects endogenous levels of TSA-1 protein. |
| Formulation : | Liquid in PBS containing 50% glycerol, 0.5% BSA and 0.02% sodium azide. |
| Source : | Polyclonal, Rabbit,IgG |
| Dilution : | IF 1:200 - 1:1000. ELISA: 1:20000. Not yet tested in other applications. |
| Purification : | The antibody was affinity-purified from rabbit antiserum by affinity-chromatography using epitope-specific immunogen. |
| Concentration : | 1 mg/ml |
| Storage Stability : | -15°C to -25°C/1 year(Do not lower than -25°C) |
| Molecularweight : | 14kD |

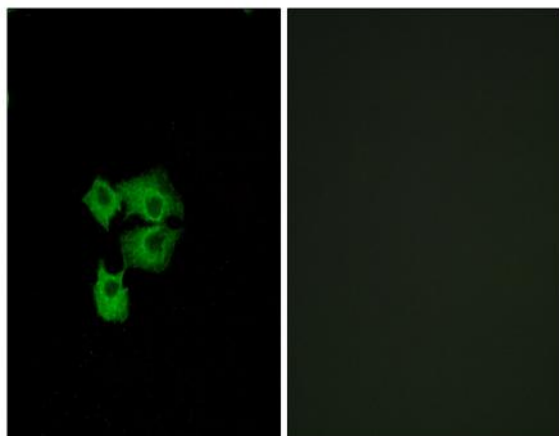
Background : induction:By retinoic acid; in promyelocytic leukemia NB4 and in myeloblast HL-60 cell lines. Activated by IFN-alpha in monocytic cell line U-937 and in peripheral blood monocyte cells.,similarity:Contains 1 UPAR/Ly6 domain.,tissue specificity:Widely expressed, predominantly in liver, kidney, ovary, spleen and peripheral blood Leukocytes.,

Function : induction:By retinoic acid; in promyelocytic leukemia NB4 and in myeloblast HL-60 cell lines. Activated by IFN-alpha in monocytic cell line U-937 and in peripheral blood monocyte cells.,similarity:Contains 1 UPAR/Ly6 domain.,tissue specificity:Widely expressed, predominantly in liver, kidney, ovary, spleen and peripheral blood Leukocytes.,

Subcellular Location : Cell membrane ; Lipid-anchor, GPI-anchor .

Expression : Widely expressed, predominantly in liver, kidney, ovary, spleen and peripheral blood Leukocytes.

Products Images



Immunofluorescence analysis of A549 cells, using LY6E Antibody. The picture on the right is blocked with the synthesized peptide.