

**TAAR3 Polyclonal Antibody**

<b>Catalog No :</b>	YT4518
<b>Reactivity :</b>	Human
<b>Applications :</b>	WB;IF;ELISA
<b>Target :</b>	TAAR3
<b>Gene Name :</b>	TAAR3
<b>Protein Name :</b>	Putative trace amine-associated receptor 3
<b>Human Gene Id :</b>	9288
<b>Human Swiss Prot No :</b>	Q9P1P4
<b>Mouse Swiss Prot No :</b>	Q5QD16
<b>Immunogen :</b>	The antiserum was produced against synthesized peptide derived from human TAAR3. AA range:206-255
<b>Specificity :</b>	TAAR3 Polyclonal Antibody detects endogenous levels of TAAR3 protein.
<b>Formulation :</b>	Liquid in PBS containing 50% glycerol, 0.5% BSA and 0.02% sodium azide.
<b>Source :</b>	Polyclonal, Rabbit,IgG
<b>Dilution :</b>	WB 1:500 - 1:2000. IF 1:200 - 1:1000. ELISA: 1:10000. Not yet tested in other applications.
<b>Purification :</b>	The antibody was affinity-purified from rabbit antiserum by affinity-chromatography using epitope-specific immunogen.
<b>Concentration :</b>	1 mg/ml
<b>Storage Stability :</b>	-15°C to -25°C/1 year(Do not lower than -25°C)
<b>Observed Band :</b>	39kD

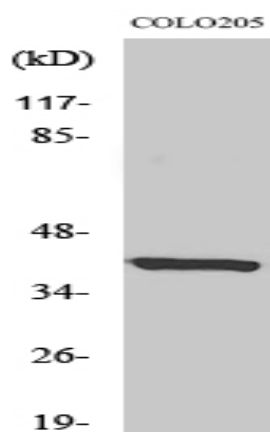
**Background :** caution:Seems to be a non functional due to its divergence in positions 20 to 45 (due to a frameshift) but does not seem to be the product of a pseudogene.,function:Orphan receptor.,similarity:Belongs to the G-protein coupled receptor 1 family.,tissue specificity:Not expressed in the pons, thalamus, globus pallidus, caudate, putamen or cerebellum.,

**Function :** caution:Seems to be a non functional due to its divergence in positions 20 to 45 (due to a frameshift) but does not seem to be the product of a pseudogene.,function:Orphan receptor.,similarity:Belongs to the G-protein coupled receptor 1 family.,tissue specificity:Not expressed in the pons, thalamus, globus pallidus, caudate, putamen or cerebellum.,

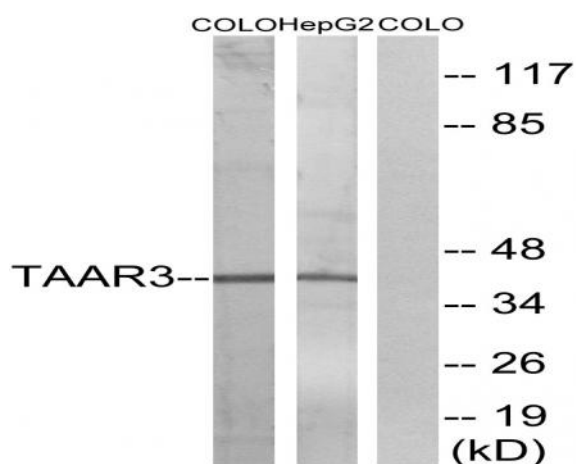
**Subcellular Location :** Cell membrane ; Multi-pass membrane protein .

**Expression :** Not expressed in the pons, thalamus, globus pallidus, caudate, putamen or cerebellum.

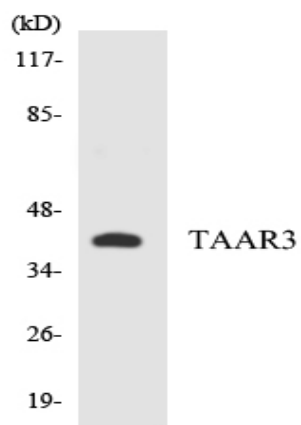
## Products Images



Western blot analysis of various cells using TAAR3 Polyclonal Antibody



Western blot analysis of lysates from COLO and HepG2 cells, using TAAR3 Antibody. The lane on the right is blocked with the synthesized peptide.



Western blot analysis of the lysates from HepG2 cells using TAAR3 antibody.