

TP53INP1 Polyclonal Antibody

Catalog No :	YT4705
Reactivity :	Human;Rat;Mouse;
Applications :	WB;IHC;IF;ELISA
Target :	TP53INP1
Gene Name :	TP53INP1
Protein Name :	Tumor protein p53-inducible nuclear protein 1
Human Gene Id :	94241
Human Swiss Prot No :	Q96A56
Mouse Swiss Prot No :	Q9QXE4
Immunogen :	The antiserum was produced against synthesized peptide derived from human TP53INP1. AA range:171-220
Specificity :	TP53INP1 Polyclonal Antibody detects endogenous levels of TP53INP1 protein.
Formulation :	Liquid in PBS containing 50% glycerol, 0.5% BSA and 0.02% sodium azide.
Source :	Polyclonal, Rabbit,IgG
Dilution :	WB 1:500 - 1:2000. IHC 1:100 - 1:300. ELISA: 1:40000.. IF 1:50-200
Purification :	The antibody was affinity-purified from rabbit antiserum by affinity-chromatography using epitope-specific immunogen.
Concentration :	1 mg/ml
Storage Stability :	-15°C to -25°C/1 year(Do not lower than -25°C)
Observed Band :	27kD

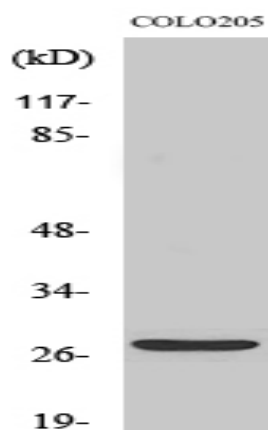
Background : function:In response to double-strand DNA breaks, promotes p53/TP53 phosphorylation on 'Ser-46' and subsequent apoptosis.,induction:By adriamycin, gamma irradiation and H(2)O(2), in a p53-dependent way. At lower levels by ultraviolet irradiation.,subcellular location:Concentrated in PML/POD/ND10 nuclear bodies.,subunit:Interacts with TP53 and HIPK2.,tissue specificity:Ubiquitously expressed.,

Function : function:In response to double-strand DNA breaks, promotes p53/TP53 phosphorylation on 'Ser-46' and subsequent apoptosis.,induction:By adriamycin, gamma irradiation and H(2)O(2), in a p53-dependent way. At lower levels by ultraviolet irradiation.,subcellular location:Concentrated in PML/POD/ND10 nuclear bodies.,subunit:Interacts with TP53 and HIPK2.,tissue specificity:Ubiquitously expressed.,

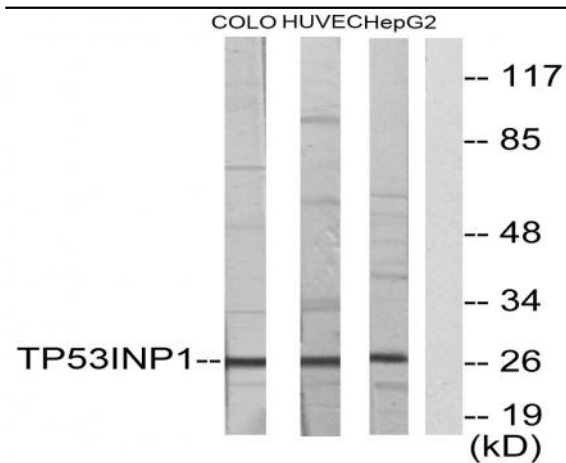
Subcellular Location : Cytoplasm, cytosol. Nucleus. Nucleus, PML body. Cytoplasmic vesicle, autophagosome. Shuttles between the nucleus and the cytoplasm, depending on cellular stress conditions, and re-localizes to autophagosomes on autophagy activation.

Expression : Ubiquitously expressed.

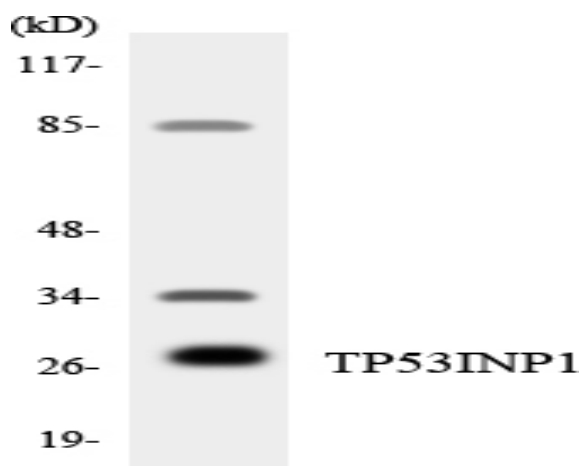
Products Images



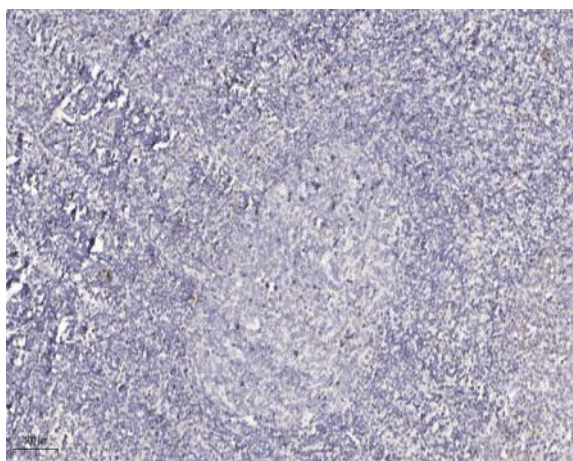
Western Blot analysis of various cells using TP53INP1 Polyclonal Antibody diluted at 1:1000. Secondary antibody(catalog#:RS0002) was diluted at 1:20000 cells nucleus extracted by Minute TM Cytoplasmic and Nuclear Fractionation kit (SC-003, Inventbiotech, MN, USA).



Western blot analysis of lysates from COLO205, HUVEC, and HepG2 cells, using TP53INP1 Antibody. The lane on the right is blocked with the synthesized peptide.



Western blot analysis of the lysates from HT-29 cells using TP53INP1 antibody.



Immunohistochemical analysis of paraffin-embedded human tonsil. 1, Antibody was diluted at 1:200(4° overnight). 2, Tris-EDTA,pH9.0 was used for antigen retrieval. 3,Secondary antibody was diluted at 1:200(room temperature, 30min).