

## USP50 Polyclonal Antibody

<b>Catalog No :</b>	YT4844
<b>Reactivity :</b>	Human;Mouse
<b>Applications :</b>	WB;IHC;IF;ELISA
<b>Target :</b>	USP50
<b>Gene Name :</b>	USP50
<b>Protein Name :</b>	Inactive ubiquitin carboxyl-terminal hydrolase 50
<b>Human Gene Id :</b>	373509
<b>Human Swiss Prot No :</b>	Q70EL3
<b>Mouse Gene Id :</b>	75083
<b>Mouse Swiss Prot No :</b>	Q6P8X6
<b>Immunogen :</b>	The antiserum was produced against synthesized peptide derived from human USP50. AA range:251-300
<b>Specificity :</b>	USP50 Polyclonal Antibody detects endogenous levels of USP50 protein.
<b>Formulation :</b>	Liquid in PBS containing 50% glycerol, 0.5% BSA and 0.02% sodium azide.
<b>Source :</b>	Polyclonal, Rabbit,IgG
<b>Dilution :</b>	WB 1:500 - 1:2000. IHC 1:100 - 1:300. ELISA: 1:20000.. IF 1:50-200
<b>Purification :</b>	The antibody was affinity-purified from rabbit antiserum by affinity-chromatography using epitope-specific immunogen.
<b>Concentration :</b>	1 mg/ml
<b>Storage Stability :</b>	-15°C to -25°C/1 year(Do not lower than -25°C)

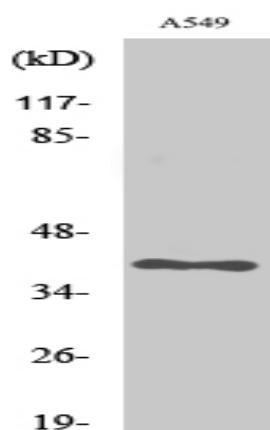
**Observed Band :** 38kD

**Background :** caution:Although the active site residues are conserved, lacks the conserved Asp/Asn residue which is normally found 7-9 residues after the catalytic His.,function:Has no peptidase activity.,similarity:Belongs to the peptidase C19 family.,tissue specificity:Weakly expressed in a few tissues.,

**Function :** caution:Although the active site residues are conserved, lacks the conserved Asp/Asn residue which is normally found 7-9 residues after the catalytic His.,function:Has no peptidase activity.,similarity:Belongs to the peptidase C19 family.,tissue specificity:Weakly expressed in a few tissues.,

**Expression :** Weakly expressed in a few tissues.

## Products Images



Western Blot analysis of various cells using USP50 Polyclonal Antibody. Secondary antibody(catalog#:RS0002) was diluted at 1:20000

