

**TMEM101 Polyclonal Antibody**

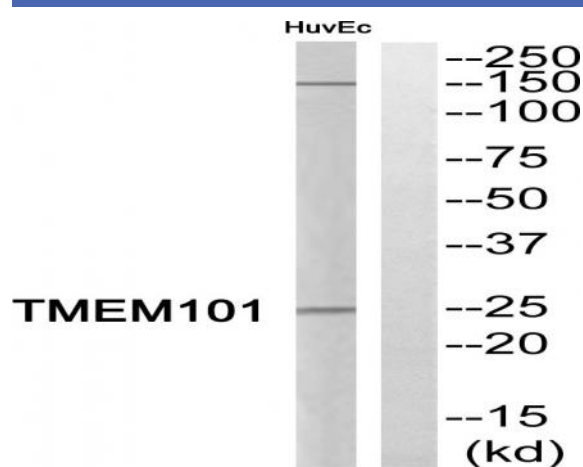
<b>Catalog No :</b>	YT4677
<b>Reactivity :</b>	Human;Mouse
<b>Applications :</b>	WB;ELISA
<b>Target :</b>	TMEM101
<b>Gene Name :</b>	TMEM101
<b>Protein Name :</b>	Transmembrane protein 101
<b>Human Gene Id :</b>	84336
<b>Human Swiss Prot No :</b>	Q96IK0
<b>Mouse Gene Id :</b>	76547
<b>Mouse Swiss Prot No :</b>	Q91VP7
<b>Immunogen :</b>	The antiserum was produced against synthesized peptide derived from human TMEM101. AA range:101-150
<b>Specificity :</b>	TMEM101 Polyclonal Antibody detects endogenous levels of TMEM101 protein.
<b>Formulation :</b>	Liquid in PBS containing 50% glycerol, 0.5% BSA and 0.02% sodium azide.
<b>Source :</b>	Polyclonal, Rabbit,IgG
<b>Dilution :</b>	WB 1:500 - 1:2000. ELISA: 1:10000. Not yet tested in other applications.
<b>Purification :</b>	The antibody was affinity-purified from rabbit antiserum by affinity-chromatography using epitope-specific immunogen.
<b>Concentration :</b>	1 mg/ml
<b>Storage Stability :</b>	-15°C to -25°C/1 year(Do not lower than -25°C)

---

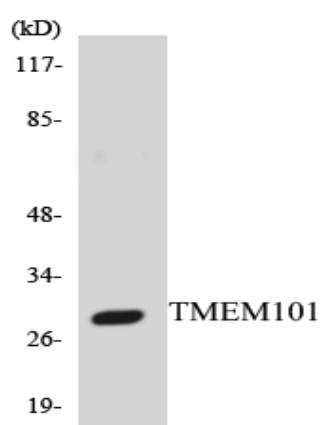
<b>Observed Band :</b>	<u>28kD</u>
<b>Background :</b>	<u>function:May activate NF-kappa-B signaling pathways.,</u>
<b>Function :</b>	<u>function:May activate NF-kappa-B signaling pathways.,</u>
<b>Subcellular Location :</b>	<u>Membrane ; Multi-pass membrane protein .</u>
<b>Expression :</b>	<u>Lung,Muscle,</u>

---

## Products Images



Western blot analysis of TMEM101 Antibody. The lane on the right is blocked with the TMEM101 peptide.



Western blot analysis of the lysates from HepG2 cells using TMEM101 antibody.