

## UROC28 Polyclonal Antibody

<b>Catalog No :</b>	YT4824
<b>Reactivity :</b>	Human;Rat;Mouse;
<b>Applications :</b>	WB;IHC;IF;ELISA
<b>Target :</b>	UROC28
<b>Gene Name :</b>	PBOV1
<b>Protein Name :</b>	Prostate and breast cancer overexpressed gene 1 protein
<b>Human Gene Id :</b>	59351
<b>Human Swiss Prot No :</b>	Q9GZY1
<b>Immunogen :</b>	The antiserum was produced against synthesized peptide derived from human PBOV1. AA range:31-80
<b>Specificity :</b>	UROC28 Polyclonal Antibody detects endogenous levels of UROC28 protein.
<b>Formulation :</b>	Liquid in PBS containing 50% glycerol, 0.5% BSA and 0.02% sodium azide.
<b>Source :</b>	Polyclonal, Rabbit,IgG
<b>Dilution :</b>	WB 1:500 - 1:2000. IHC 1:100 - 1:300. IF 1:200 - 1:1000. ELISA: 1:40000. Not yet tested in other applications.
<b>Purification :</b>	The antibody was affinity-purified from rabbit antiserum by affinity-chromatography using epitope-specific immunogen.
<b>Concentration :</b>	1 mg/ml
<b>Storage Stability :</b>	-15°C to -25°C/1 year(Do not lower than -25°C)
<b>Observed Band :</b>	19kD
<b>Background :</b>	This intronless gene encodes a protein of unknown function. Its expression is up-

regulated in some types of cancer, including prostate, breast, and bladder cancer. [provided by RefSeq, Aug 2011],

### Function :

tissue specificity:Expressed in colon, prostate, small intestine, testis and spleen, with lower expression in thymus, ovary, and peripheral blood leukocytes. Up-regulated expression in prostate, breast, and bladder cancer, but not in lung and colon cancer.,

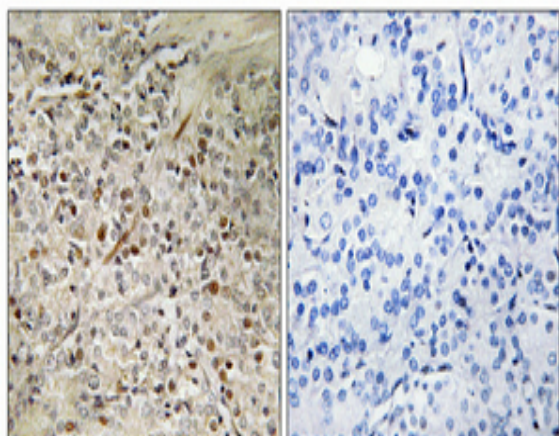
### Subcellular Location :

Cytoplasm . Nucleus .

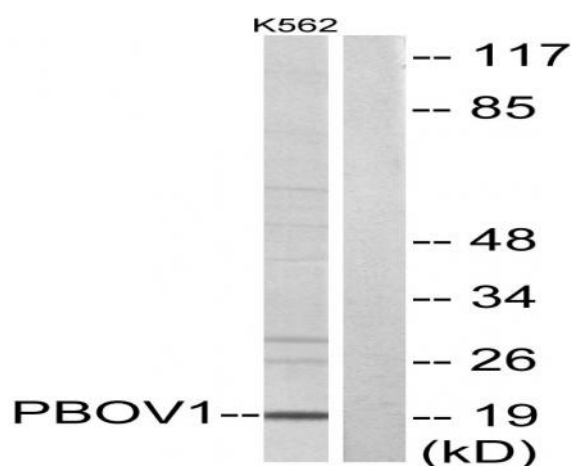
### Expression :

Expressed in colon, prostate, small intestine, testis and spleen, with lower expression in thymus, ovary, and peripheral blood leukocytes. Up-regulated expression in prostate, breast, and bladder cancer, but not in lung and colon cancer.

## Products Images



Immunohistochemical analysis of paraffin-embedded Human prostate cancer. Antibody was diluted at 1:100(4° overnight). High-pressure and temperature Tris-EDTA,pH8.0 was used for antigen retrieval. Negative contrl (right) obtained from antibody was pre-absorbed by immunogen peptide.



Western blot analysis of lysates from K562 cells, using PBOV1 Antibody. The lane on the right is blocked with the synthesized peptide.