

## SRF Polyclonal Antibody

<b>Catalog No :</b>	YT4414
<b>Reactivity :</b>	Human;Mouse;Rat
<b>Applications :</b>	WB;IHC;IF;ELISA
<b>Target :</b>	SRF
<b>Fields :</b>	>>MAPK signaling pathway;>>cGMP-PKG signaling pathway;>>Human T-cell leukemia virus 1 infection;>>Viral carcinogenesis
<b>Gene Name :</b>	SRF
<b>Protein Name :</b>	Serum response factor
<b>Human Gene Id :</b>	6722
<b>Human Swiss Prot No :</b>	P11831
<b>Mouse Gene Id :</b>	20807
<b>Mouse Swiss Prot No :</b>	Q9JM73
<b>Immunogen :</b>	The antiserum was produced against synthesized peptide derived from human SRF. AA range:71-120
<b>Specificity :</b>	SRF Polyclonal Antibody detects endogenous levels of SRF protein.
<b>Formulation :</b>	Liquid in PBS containing 50% glycerol, 0.5% BSA and 0.02% sodium azide.
<b>Source :</b>	Polyclonal, Rabbit,IgG
<b>Dilution :</b>	WB 1:500 - 1:2000. IHC 1:100 - 1:300. ELISA: 1:5000.. IF 1:50-200
<b>Purification :</b>	The antibody was affinity-purified from rabbit antiserum by affinity-chromatography using epitope-specific immunogen.
<b>Concentration :</b>	1 mg/ml

**Storage Stability :** -15°C to -25°C/1 year(Do not lower than -25°C)

**Observed Band :** 67kD

**Cell Pathway :** MAPK\_ERK\_Growth;MAPK\_G\_Protein;

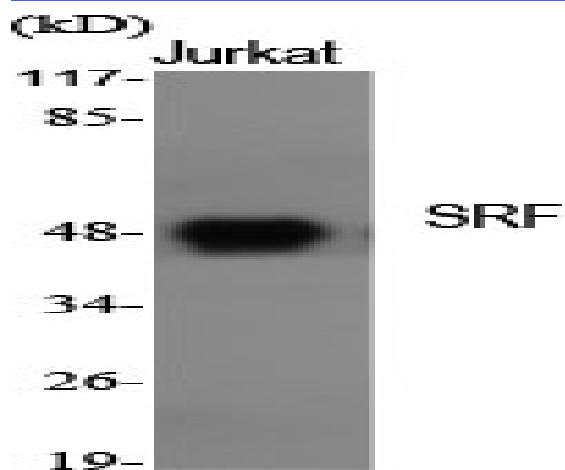
**Background :** This gene encodes a ubiquitous nuclear protein that stimulates both cell proliferation and differentiation. It is a member of the MADS (MCM1, Agamous, Deficiens, and SRF) box superfamily of transcription factors. This protein binds to the serum response element (SRE) in the promoter region of target genes. This protein regulates the activity of many immediate-early genes, for example c-fos, and thereby participates in cell cycle regulation, apoptosis, cell growth, and cell differentiation. This gene is the downstream target of many pathways; for example, the mitogen-activated protein kinase pathway (MAPK) that acts through the ternary complex factors (TCFs). Two transcript variants encoding different isoforms have been found for this gene. [provided by RefSeq, May 2014],

**Function :** function:SRF is a transcription factor that binds to the serum response element (SRE), a short sequence of dyad symmetry located 300 bp to the 5' of the site of transcription initiation of some genes (such as FOS). Required for cardiac differentiation and maturation.,PTM:Phosphorylated by PRKDC.,similarity:Contains 1 MADS-box domain.,subunit:Binds DNA as a multimer, probably a dimer. Interacts with MLLT7/FOXO4, NKX3A and SSRP1. Interacts with ARID2 and SRFBP1 (By similarity). Forms complexes with ARID2, MYOCD, NKX2-5 and SRFBP1.,

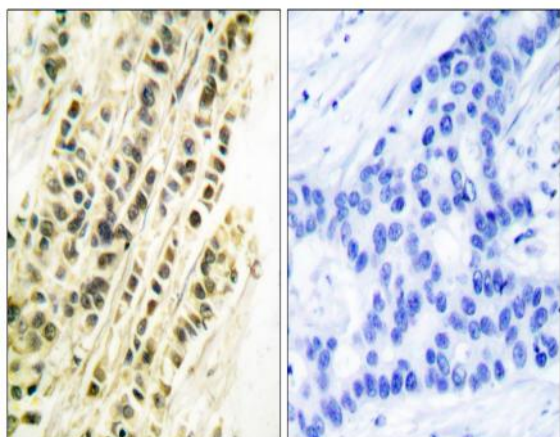
**Subcellular Location :** Nucleus .

**Expression :** Brain,Epithelium,Lung,Lymph,

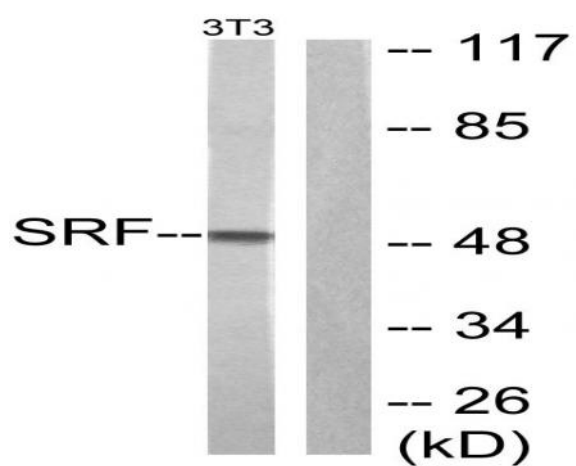
## Products Images



Western Blot analysis of various cells using SRF Polyclonal Antibody



Immunohistochemistry analysis of paraffin-embedded human breast carcinoma tissue, using SRF Antibody. The picture on the right is blocked with the synthesized peptide.



Western blot analysis of lysates from NIH/3T3 cells, treated with PMA 125ng/ml 30', using SRF Antibody. The lane on the right is blocked with the synthesized peptide.