

## Srb7 Polyclonal Antibody

<b>Catalog No :</b>	YT4410
<b>Reactivity :</b>	Human;Mouse
<b>Applications :</b>	IHC;IF;ELISA
<b>Target :</b>	Srb7
<b>Gene Name :</b>	MED21
<b>Protein Name :</b>	Mediator of RNA polymerase II transcription subunit 21
<b>Human Gene Id :</b>	9412
<b>Human Swiss Prot No :</b>	Q13503
<b>Mouse Gene Id :</b>	108098
<b>Mouse Swiss Prot No :</b>	Q9CQ39
<b>Immunogen :</b>	The antiserum was produced against synthesized peptide derived from human MED21. AA range:71-120
<b>Specificity :</b>	Srb7 Polyclonal Antibody detects endogenous levels of Srb7 protein.
<b>Formulation :</b>	Liquid in PBS containing 50% glycerol, 0.5% BSA and 0.02% sodium azide.
<b>Source :</b>	Polyclonal, Rabbit,IgG
<b>Dilution :</b>	IHC 1:100 - 1:300. ELISA: 1:20000.. IF 1:50-200
<b>Purification :</b>	The antibody was affinity-purified from rabbit antiserum by affinity-chromatography using epitope-specific immunogen.
<b>Concentration :</b>	1 mg/ml
<b>Storage Stability :</b>	-15°C to -25°C/1 year(Do not lower than -25°C)

---

**Molecularweight :** 16kD

---

**Background :** This gene encodes a member of the mediator complex subunit 21 family. The encoded protein interacts with the human RNA polymerase II holoenzyme and is involved in transcriptional regulation of RNA polymerase II transcribed genes. A pseudogene of this gene is located on chromosome 8. Alternative splicing results in multiple transcript variants. [provided by RefSeq, Nov 2012],

---

**Function :** function:Component of the Mediator complex, a coactivator involved in the regulated transcription of nearly all RNA polymerase II-dependent genes. Mediator functions as a bridge to convey information from gene-specific regulatory proteins to the basal RNA polymerase II transcription machinery. Mediator is recruited to promoters by direct interactions with regulatory proteins and serves as a scaffold for the assembly of a functional preinitiation complex with RNA polymerase II and the general transcription factors.,similarity:Belongs to the Mediator complex subunit 21 family.,subunit:Interacts with PPARG (By similarity). Component of the Mediator complex, which is composed of MED1, MED4, MED6, MED7, MED8, MED9, MED10, MED11, MED12, MED13, MED13L, MED14, MED15, MED16, MED17, MED18, MED19, MED20, MED21, MED22, MED23, MED24, MED25, MED26, MED27, MED29, MED30, MED31, CCNC, CDK8 and CDC2L6/CDK

---

**Subcellular Location :** Nucleus .

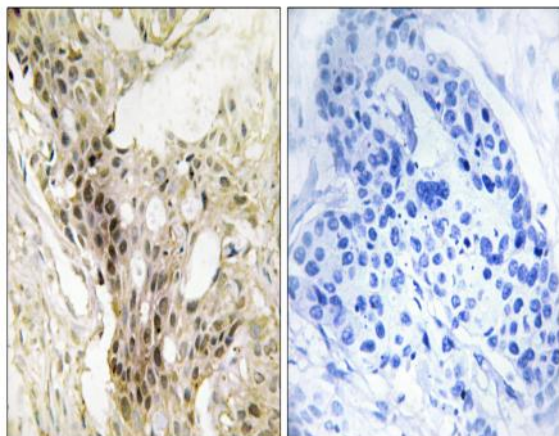
---

**Location :**

**Expression :** Kidney,Liver,

---

## Products Images



Immunohistochemistry analysis of paraffin-embedded human breast carcinoma tissue, using MED21 Antibody. The picture on the right is blocked with the synthesized peptide.