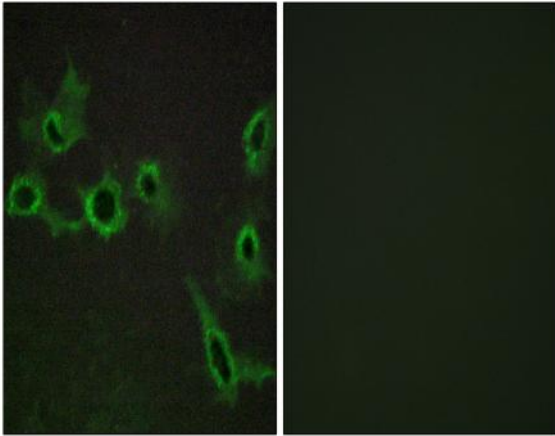


SR-7 Polyclonal Antibody

Catalog No :	YT4409
Reactivity :	Human;Mouse;Rat
Applications :	IF;ELISA
Target :	SR-7
Fields :	>>Ras signaling pathway;>>Calcium signaling pathway;>>Neuroactive ligand-receptor interaction;>>Serotonergic synapse
Gene Name :	HTR7
Protein Name :	5-hydroxytryptamine receptor 7
Human Gene Id :	3363
Human Swiss Prot No :	P34969
Mouse Gene Id :	15566
Mouse Swiss Prot No :	P32304
Rat Gene Id :	65032
Rat Swiss Prot No :	P32305
Immunogen :	The antiserum was produced against synthesized peptide derived from human HTR7. AA range:391-440
Specificity :	SR-7 Polyclonal Antibody detects endogenous levels of SR-7 protein.
Formulation :	Liquid in PBS containing 50% glycerol, 0.5% BSA and 0.02% sodium azide.
Source :	Polyclonal, Rabbit,IgG
Dilution :	IF 1:200 - 1:1000. ELISA: 1:5000. Not yet tested in other applications.

Purification :	The antibody was affinity-purified from rabbit antiserum by affinity-chromatography using epitope-specific immunogen.
Concentration :	1 mg/ml
Storage Stability :	-15°C to -25°C/1 year(Do not lower than -25°C)
Molecularweight :	54kD
Cell Pathway :	Calcium;Neuroactive ligand-receptor interaction;
Background :	The neurotransmitter, serotonin, is thought to play a role in various cognitive and behavioral functions. The serotonin receptor encoded by this gene belongs to the superfamily of G protein-coupled receptors and the gene is a candidate locus for involvement in autistic disorder and other neuropsychiatric disorders. Three splice variants have been identified which encode proteins that differ in the length of their carboxy terminal ends. [provided by RefSeq, Jul 2008],
Function :	alternative products:Isoform A and isoform B appear to be expressed at higher levels,function:This is one of the several different receptors for 5-hydroxytryptamine (serotonin), a biogenic hormone that functions as a neurotransmitter, a hormone, and a mitogen. The activity of this receptor is mediated by G proteins that stimulate adenylate cyclase.,similarity:Belongs to the G-protein coupled receptor 1 family.,tissue specificity:Isoform A is the predominant isoform in spleen, caudate and hippocampus. Isoform B is expressed at lower levels, and isoform D is a minor isoform.,
Subcellular Location :	Cell membrane; Multi-pass membrane protein.
Expression :	Isoform A is the predominant isoform in spleen, caudate and hippocampus. Isoform B is expressed at lower levels. Isoform D is a minor isoform in terms of expression.

Products Images



Immunofluorescence analysis of COS7 cells, using HTR7 Antibody. The picture on the right is blocked with the synthesized peptide.