

SR-3D Polyclonal Antibody

Catalog No :	YT4402
Reactivity :	Human
Applications :	WB;IF;ELISA
Target :	SR-3D
Fields :	>>Serotonergic synapse;>>Taste transduction
Gene Name :	HTR3D
Protein Name :	5-hydroxytryptamine receptor 3D
Human Gene Id :	200909
Human Swiss Prot No :	Q70Z44
Immunogen :	Synthesized peptide derived from SR-3D . at AA range: 10-90
Specificity :	SR-3D Polyclonal Antibody detects endogenous levels of SR-3D protein.
Formulation :	Liquid in PBS containing 50% glycerol, 0.5% BSA and 0.02% sodium azide.
Source :	Polyclonal, Rabbit,IgG
Dilution :	WB 1:500 - 1:2000. IF 1:200 - 1:1000. ELISA: 1:10000. Not yet tested in other applications.
Purification :	The antibody was affinity-purified from rabbit antiserum by affinity-chromatography using epitope-specific immunogen.
Concentration :	1 mg/ml
Storage Stability :	-15°C to -25°C/1 year(Do not lower than -25°C)
Observed Band :	50kD

Background :

The protein encoded this gene belongs to the ligand-gated ion channel receptor superfamily. This gene encodes subunit D of the type 3 receptor for 5-hydroxytryptamine (serotonin), a biogenic hormone that functions as a neurotransmitter, a mitogen and a hormone. This hormone has been linked to neuropsychiatric disorders, including anxiety, depression, and migraine. Serotonin receptors causes fast and depolarizing responses in neurons following activation. The genes encoding subunits C, D and E of this type 3 receptor form a cluster on chromosome 3. Alternatively spliced transcript variants encoding different isoforms have been found for this gene. [provided by RefSeq, Jul 2009],

Function :

function:This is one of the several different receptors for 5-hydroxytryptamine (serotonin), a biogenic hormone that functions as a neurotransmitter, a hormone, and a mitogen. This receptor is a ligand-gated ion channel, which when activated causes fast, depolarizing responses. It is a cation-specific, but otherwise relatively nonselective, ion channel.,similarity:Belongs to the ligand-gated ionic channel (TC 1.A.9) family.,subcellular location:Presumably retained within the endoplasmic reticulum unless complexed with HTR3A.,subunit:Forms a pentaheteromeric complex with HTR3A, homomeric complex being not functional.,tissue specificity:Expressed in liver, as well as fetal and adult colon and kidney.,

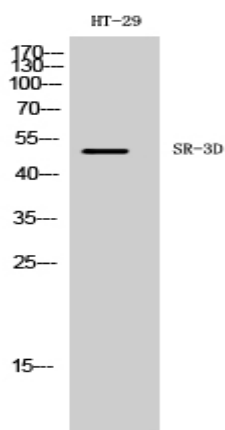
Subcellular Location :

Cell membrane ; Multi-pass membrane protein . Presumably retained within the endoplasmic reticulum unless complexed with HTR3A.

Expression :

Expressed in liver, as well as fetal and adult colon and kidney.

Products Images



Western Blot analysis of HT-29 cells using SR-3D Polyclonal Antibody