

Spectrin β V Polyclonal Antibody

Catalog No :	YT4382
Reactivity :	Human
Applications :	IHC;IF;ELISA
Target :	Spectrin β V
Gene Name :	SPTBN5
Protein Name :	Spectrin beta chain non-erythrocytic 5
Human Gene Id :	51332
Human Swiss Prot No :	Q9NRC6
Immunogen :	The antiserum was produced against synthesized peptide derived from human SPTBN5. AA range:481-530
Specificity :	Spectrin β V Polyclonal Antibody detects endogenous levels of Spectrin β V protein.
Formulation :	Liquid in PBS containing 50% glycerol, 0.5% BSA and 0.02% sodium azide.
Source :	Polyclonal, Rabbit,IgG
Dilution :	IHC 1:100 - 1:300. ELISA: 1:40000.. IF 1:50-200
Purification :	The antibody was affinity-purified from rabbit antiserum by affinity-chromatography using epitope-specific immunogen.
Concentration :	1 mg/ml
Storage Stability :	-15°C to -25°C/1 year(Do not lower than -25°C)
Molecularweight :	417kD
Background :	similarity:Belongs to the spectrin family.,similarity:Contains 1 PH

domain.,similarity:Contains 2 CH (calponin-homology)
domains.,similarity:Contains 31 spectrin repeats.,subcellular location:Detected prominently in the outer segments of photoreceptor rods and cones and in the basolateral membrane and cytosol of gastric epithelial cells.,subunit:Probably associates with an alpha chain.,tissue specificity:Expressed at very low levels in many tissues, with strongest expression in cerebellum, spinal cord, stomach, pituitary gland, liver, pancreas, salivary gland, kidney, bladder, and heart.,

Function :

similarity:Belongs to the spectrin family.,similarity:Contains 1 PH
domain.,similarity:Contains 2 CH (calponin-homology)
domains.,similarity:Contains 31 spectrin repeats.,subcellular location:Detected prominently in the outer segments of photoreceptor rods and cones and in the basolateral membrane and cytosol of gastric epithelial cells.,subunit:Probably associates with an alpha chain.,tissue specificity:Expressed at very low levels in many tissues, with strongest expression in cerebellum, spinal cord, stomach, pituitary gland, liver, pancreas, salivary gland, kidney, bladder, and heart.,

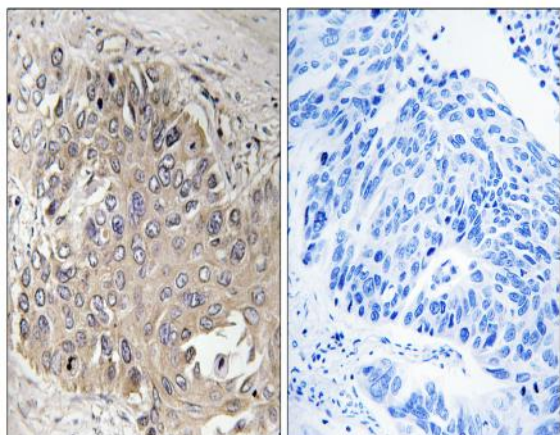
Subcellular Location :

Cytoplasm, cytoskeleton. Detected prominently in the outer segments of photoreceptor rods and cones and in the basolateral membrane and cytosol of gastric epithelial cells.

Expression :

Expressed at very low levels in many tissues, with strongest expression in cerebellum, spinal cord, stomach, pituitary gland, liver, pancreas, salivary gland, kidney, bladder, and heart.

Products Images



Immunohistochemistry analysis of paraffin-embedded human lung carcinoma, using SPTBN5 Antibody. The picture on the right is blocked with the synthesized peptide.