

Sox-6 Polyclonal Antibody

Catalog No :	YT4369
Reactivity :	Human;Mouse;Rat;Monkey
Applications :	WB;IHC;IF;ELISA
Target :	Sox-6
Gene Name :	SOX6
Protein Name :	Transcription factor SOX-6
Human Gene Id :	55553
Human Swiss Prot No :	P35712
Mouse Gene Id :	20679
Mouse Swiss Prot No :	P40645
Immunogen :	The antiserum was produced against synthesized peptide derived from human SOX6. AA range:10-59
Specificity :	Sox-6 Polyclonal Antibody detects endogenous levels of Sox-6 protein.
Formulation :	Liquid in PBS containing 50% glycerol, 0.5% BSA and 0.02% sodium azide.
Source :	Polyclonal, Rabbit,IgG
Dilution :	WB 1:500 - 1:2000. IHC 1:100 - 1:300. ELISA: 1:5000.. IF 1:50-200
Purification :	The antibody was affinity-purified from rabbit antiserum by affinity-chromatography using epitope-specific immunogen.
Concentration :	1 mg/ml
Storage Stability :	-15°C to -25°C/1 year(Do not lower than -25°C)

Observed Band : 91kD

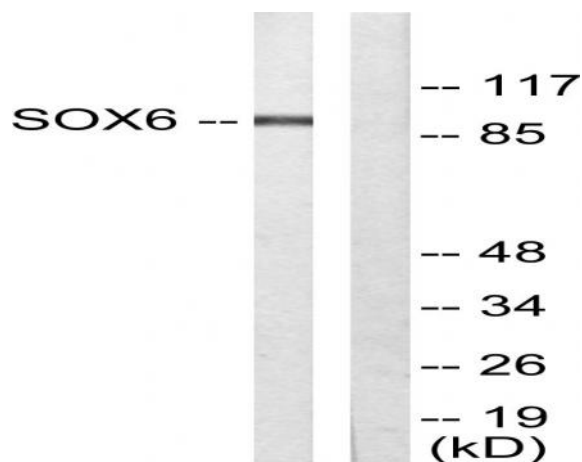
Background : SRY-box 6(SOX6) Homo sapiens This gene encodes a member of the D subfamily of sex determining region y-related transcription factors that are characterized by a conserved DNA-binding domain termed the high mobility group box and by their ability to bind the minor groove of DNA. The encoded protein is a transcriptional activator that is required for normal development of the central nervous system, chondrogenesis and maintenance of cardiac and skeletal muscle cells. The encoded protein interacts with other family members to cooperatively activate gene expression. Alternative splicing results in multiple transcript variants.[provided by RefSeq, Mar 2009],

Function : function:Transcriptional activator. Binds specifically to the DNA sequence 5'-AACAAAT-3'. Plays a key role in several developmental processes, including neurogenesis and skeleton formation.,PTM:Sumoylation inhibits the transcriptional activity.,similarity:Contains 1 HMG box DNA-binding domain.,subunit:Interacts with DAZAP2.,tissue specificity:Expressed in a wide variety of tissues, most abundantly in skeletal muscle.,

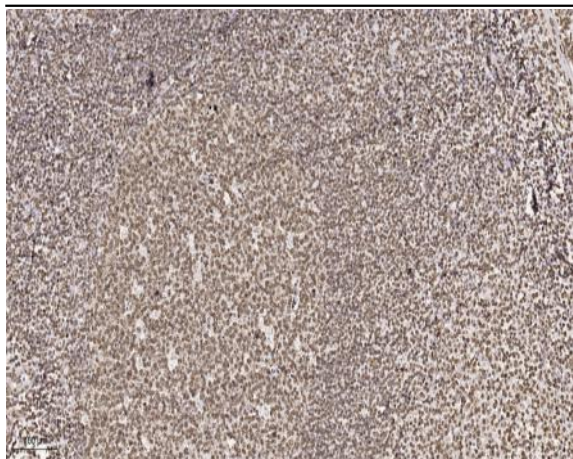
Subcellular Location : Nucleus . Cytoplasm .

Expression : Expressed in a wide variety of tissues, most abundantly in skeletal musclen.

Products Images



Western blot analysis of lysates from Jurkat cells, using SOX6 Antibody. The lane on the right is blocked with the synthesized peptide.



Immunohistochemical analysis of paraffin-embedded human tonsil. 1, Tris-EDTA, pH 9.0 was used for antigen retrieval. 2 Antibody was diluted at 1:200 (4° overnight). 3, Secondary antibody was diluted at 1:200 (room temperature, 45 min).