

TSSK 6 Polyclonal Antibody

Catalog No :	YT4768
Reactivity :	Human;Mouse;Rat;
Applications :	IHC;IF;ELISA
Target :	TSSK6
Gene Name :	TSSK6
Protein Name :	Testis-specific serine/threonine-protein kinase 6
Human Gene Id :	83983
Human Swiss Prot No :	Q9BXA6
Mouse Gene Id :	83984
Mouse Swiss Prot No :	Q925K9
Immunogen :	Synthesized peptide derived from the Internal region of human TSSK 6.
Specificity :	TSSK 6 Polyclonal Antibody detects endogenous levels of TSSK 6 protein.
Formulation :	Liquid in PBS containing 50% glycerol, 0.5% BSA and 0.02% sodium azide.
Source :	Polyclonal, Rabbit,IgG
Dilution :	IHC 1:100 - 1:300. ELISA: 1:40000.. IF 1:50-200
Purification :	The antibody was affinity-purified from rabbit antiserum by affinity-chromatography using epitope-specific immunogen.
Concentration :	1 mg/ml
Storage Stability :	-15°C to -25°C/1 year(Do not lower than -25°C)

Molecularweight : 30kD

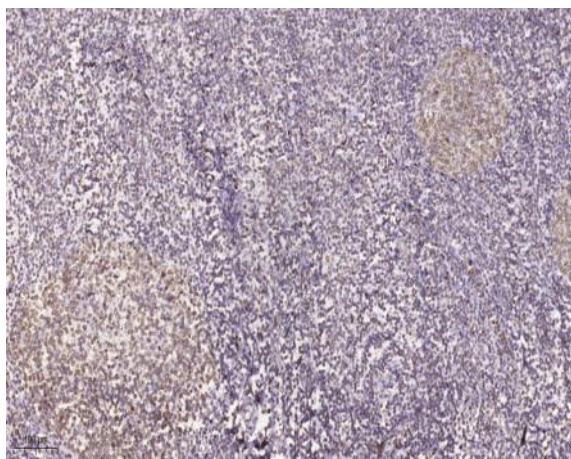
Background : This intronless gene encodes a member of the CAMK (calcium/calmodulin-dependent) serine/threonine protein kinase family. The encoded kinase has a broad expression pattern but is described as testis-specific due to effects on fertility. Male mice which lack the gene encoding a highly similar protein are sterile and have morphologically abnormal sperm. [provided by RefSeq, Jan 2012],

Function : catalytic activity:ATP + a protein = ADP + a phosphoprotein.,cofactor:Magnesium.,function:Required for sperm production and function. Plays a role in DNA condensation during postmeiotic chromatin remodeling.,PTM:Autophosphorylated.,similarity:Belongs to the protein kinase superfamily. CAMK Ser/Thr protein kinase family.,similarity:Contains 1 protein kinase domain.,subunit:Interacts with the heatshock proteins HSPCB, HSPA8 and HAPA1A. These interactions appear to be required for TSSK6 kinase activity.,tissue specificity:Highly expressed in testis. Expressed at lower levels in human colon, small intestine, ovary, prostate, thymus, spleen and peripheral blood leukocytes.,

Subcellular Location : nucleus,cytoplasm,

Expression : Highly expressed in testis. Expressed at lower levels in colon, small intestine, ovary, prostate, thymus, spleen and peripheral blood leukocytes.

Products Images



Immunohistochemical analysis of paraffin-embedded human tonsil. 1, Tris-EDTA,pH9.0 was used for antigen retrieval. 2 Antibody was diluted at 1:200(4° overnight.3,Secondary antibody was diluted at 1:200(room temperature, 45min).