

## SNX1 Polyclonal Antibody

<b>Catalog No :</b>	YT4358
<b>Reactivity :</b>	Human;Mouse;Rat
<b>Applications :</b>	WB;ELISA;IHC
<b>Target :</b>	SNX1
<b>Fields :</b>	>>Endocytosis
<b>Gene Name :</b>	SNX1
<b>Protein Name :</b>	Sorting nexin-1
<b>Human Gene Id :</b>	6642
<b>Human Swiss Prot No :</b>	Q13596
<b>Mouse Gene Id :</b>	56440
<b>Mouse Swiss Prot No :</b>	Q9WV80
<b>Rat Gene Id :</b>	84471
<b>Rat Swiss Prot No :</b>	Q99N27
<b>Immunogen :</b>	Synthesized peptide derived from the Internal region of human SNX1.
<b>Specificity :</b>	SNX1 Polyclonal Antibody detects endogenous levels of SNX1 protein.
<b>Formulation :</b>	Liquid in PBS containing 50% glycerol, 0.5% BSA and 0.02% sodium azide.
<b>Source :</b>	Polyclonal, Rabbit,IgG
<b>Dilution :</b>	WB 1:500-2000;IHC 1:50-300; ELISA 2000-20000
<b>Purification :</b>	The antibody was affinity-purified from rabbit antiserum by affinity-

chromatography using epitope-specific immunogen.

---

**Concentration :** 1 mg/ml

---

**Storage Stability :** -15°C to -25°C/1 year (Do not lower than -25°C)

---

**Observed Band :** 60kD

---

**Background :** This gene encodes a member of the sorting nexin family. Members of this family contain a phox (PX) domain, which is a phosphoinositide binding domain, and are involved in intracellular trafficking. This endosomal protein regulates the cell-surface expression of epidermal growth factor receptor. This protein also has a role in sorting protease-activated receptor-1 from early endosomes to lysosomes. This protein may form oligomeric complexes with family members. This gene results in three transcript variants encoding distinct isoforms. [provided by RefSeq, Jul 2008],

---

**Function :** function:May be involved in several stages of intracellular trafficking. Plays a role in targeting ligand-activated EGFR to the lysosomes for degradation after endocytosis from the cell surface and release from the Golgi. Component of the retromer complex, a complex required to retrieve lysosomal enzyme receptors (IGF2R and M6PR) from endosomes to the trans-Golgi network. Interacts with PtdIns(3,4,5)P3 and, with weaker affinity, with PtdIns(3,5)P2.,similarity:Belongs to the sorting nexin family.,similarity:Contains 1 PX (phox homology) domain.,subunit:Self-assembles into a complex of approximately 300 kDa (By similarity). Interacts with HGS (By similarity). Component of the retromer complex composed of VPS26 (VPS26A or VPS26B), VPS29, VPS35, SNX1 and SNX2.,

---

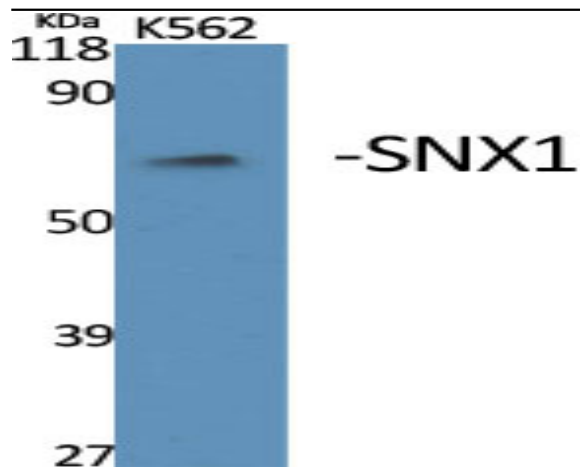
**Subcellular Location :** Endosome membrane ; Peripheral membrane protein; Cytoplasmic side. Golgi apparatus, trans-Golgi network membrane ; Peripheral membrane protein ; Cytoplasmic side . Early endosome membrane; Peripheral membrane protein; Cytoplasmic side. Cell projection, lamellipodium . Enriched on tubular elements of the early endosome membrane. Binds preferentially to highly curved membranes enriched in phosphatidylinositol 3-phosphate (PtdIns(3P)) or phosphatidylinositol 3,5-bisphosphate (PtdIns(3,5)P2) (PubMed:15498486). Colocalized with SORT1 to tubular endosomal membrane structures called endosome-to-TGN transport carriers (ETCs) which are budding from early endosome vacuoles just before maturing into late endosome vacuoles (PubMed:18088323). Colocalizes with DNAJC13 and Shiginella dysenteria toxin stx

---

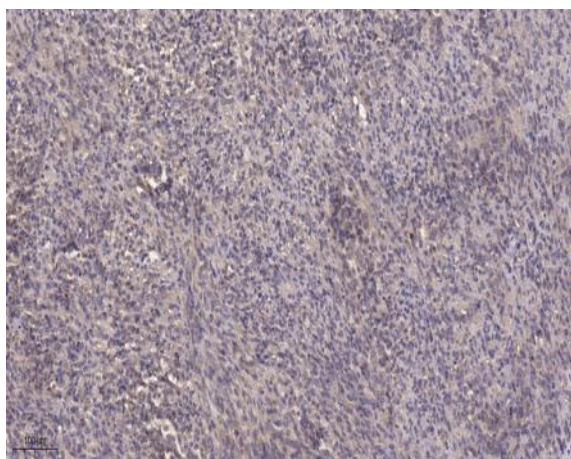
**Expression :** Brain,Coronary artery,Liver,Muscle,Testis,

---

## Products Images



Western Blot analysis of various cells using SNX1 Polyclonal Antibody



Immunohistochemical analysis of paraffin-embedded human Colon cancer. 1, Antibody was diluted at 1:200(4° overnight). 2, Tris-EDTA,pH9.0 was used for antigen retrieval. 3,Secondary antibody was diluted at 1:200(room temperature, 45min).