

SMVT Polyclonal Antibody

Catalog No :	YT4349
Reactivity :	Human;Rat;Mouse;
Applications :	WB;ELISA;IHC
Target :	SMVT
Fields :	>>Vitamin digestion and absorption
Gene Name :	SLC5A6
Protein Name :	Sodium-dependent multivitamin transporter
Human Gene Id :	8884
Human Swiss Prot No :	Q9Y289
Mouse Swiss Prot No :	Q5U4D8
Immunogen :	The antiserum was produced against synthesized peptide derived from human SLC5A6. AA range:551-600
Specificity :	SMVT Polyclonal Antibody detects endogenous levels of SMVT protein.
Formulation :	Liquid in PBS containing 50% glycerol, 0.5% BSA and 0.02% sodium azide.
Source :	Polyclonal, Rabbit,IgG
Dilution :	WB 1:500-2000;IHC 1:50-300; ELISA 2000-20000
Purification :	The antibody was affinity-purified from rabbit antiserum by affinity-chromatography using epitope-specific immunogen.
Concentration :	1 mg/ml
Storage Stability :	-15°C to -25°C/1 year(Do not lower than -25°C)

Observed Band : 68kD

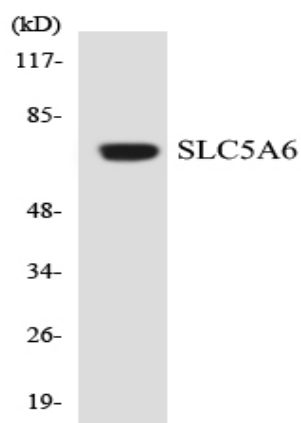
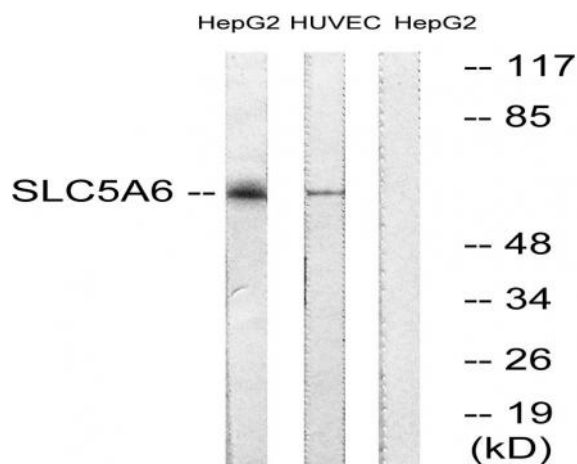
Background : function:Transports pantothenate, biotin and lipoate in the presence of sodium.,similarity:Belongs to the sodium:solute symporter (SSF) (TC 2.A.21) family.,

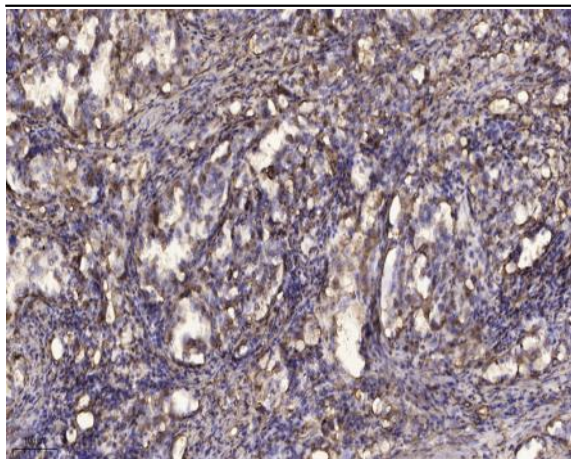
Function : function:Transports pantothenate, biotin and lipoate in the presence of sodium.,similarity:Belongs to the sodium:solute symporter (SSF) (TC 2.A.21) family.,

Subcellular Location : Cell membrane ; Multi-pass membrane protein .; Cell membrane ; Multi-pass membrane protein . (Microbial infection) Exposure to E.coli lipopolysaccharides leads to reduced cell membrane localization. .

Expression : Expressed in microvessels of the brain (at protein level) (PubMed:25809983). Expressed in heart, brain, placenta, lung, liver, skeletal muscle, kidney, and pancreas (PubMed:10329687).

Products Images





Immunohistochemical analysis of paraffin-embedded human Squamous cell carcinoma of lung. 1, Antibody was diluted at 1:200(4° overnight). 2, Tris-EDTA,pH9.0 was used for antigen retrieval. 3,Secondary antibody was diluted at 1:200(room temperature, 45min).