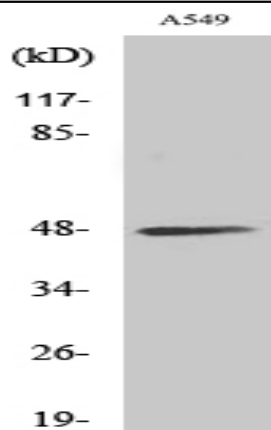


sMtCK Polyclonal Antibody

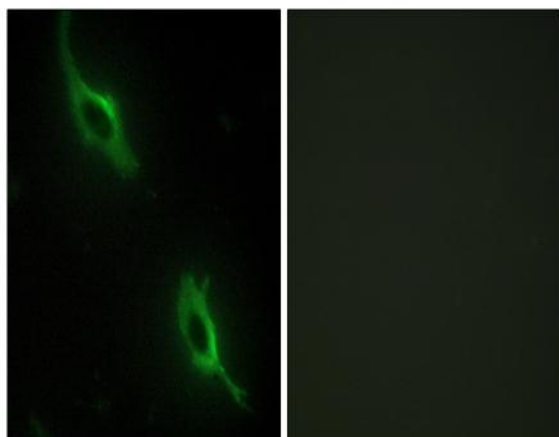
Catalog No :	YT4347
Reactivity :	Human;Mouse;Rat
Applications :	WB;IHC;IF;ELISA
Target :	sMtCK
Fields :	>>Arginine and proline metabolism;>>Metabolic pathways
Gene Name :	CKMT2
Protein Name :	Creatine kinase S-type mitochondrial
Human Gene Id :	1160
Human Swiss Prot No :	P17540
Mouse Gene Id :	76722
Mouse Swiss Prot No :	Q6P8J7
Rat Swiss Prot No :	P09605
Immunogen :	The antiserum was produced against synthesized peptide derived from human CKMT2. AA range:231-280
Specificity :	sMtCK Polyclonal Antibody detects endogenous levels of sMtCK protein.
Formulation :	Liquid in PBS containing 50% glycerol, 0.5% BSA and 0.02% sodium azide.
Source :	Polyclonal, Rabbit,IgG
Dilution :	WB 1:500 - 1:2000. IHC 1:100 - 1:300. IF 1:200 - 1:1000. ELISA: 1:40000. Not yet tested in other applications.
Purification :	The antibody was affinity-purified from rabbit antiserum by affinity-chromatography using epitope-specific immunogen.

Concentration :	1 mg/ml
Storage Stability :	-15°C to -25°C/1 year(Do not lower than -25°C)
Observed Band :	48kD
Cell Pathway :	Arginine and proline metabolism;
Background :	<p>creatine kinase, mitochondrial 2(CKMT2) Homo sapiens Mitochondrial creatine kinase (MtCK) is responsible for the transfer of high energy phosphate from mitochondria to the cytosolic carrier, creatine. It belongs to the creatine kinase isoenzyme family. It exists as two isoenzymes, sarcomeric MtCK and ubiquitous MtCK, encoded by separate genes. Mitochondrial creatine kinase occurs in two different oligomeric forms: dimers and octamers, in contrast to the exclusively dimeric cytosolic creatine kinase isoenzymes. Sarcomeric mitochondrial creatine kinase has 80% homology with the coding exons of ubiquitous mitochondrial creatine kinase. This gene contains sequences homologous to several motifs that are shared among some nuclear genes encoding mitochondrial proteins and thus may be essential for the coordinated activation of these genes during mitochondrial biogenesis. Three transcript variants encoding the same protein have been found for this gen</p>
Function :	<p>catalytic activity:ATP + creatine = ADP + phosphocreatine.,function:Reversibly catalyzes the transfer of phosphate between ATP and various phosphogens (e.g. creatine phosphate). Creatine kinase isoenzymes play a central role in energy transduction in tissues with large, fluctuating energy demands, such as skeletal muscle, heart, brain and spermatozoa.,miscellaneous:Mitochondrial creatine kinase binds cardiolipin.,similarity:Belongs to the ATP:guanido phosphotransferase family.,subunit:Exists as an octamer composed of four CKMT2 homodimers.,tissue specificity:Sarcomere-specific. Found only in heart and skeletal muscles.,</p>
Subcellular Location :	Mitochondrion inner membrane; Peripheral membrane protein; Intermembrane side.
Expression :	Sarcomere-specific. Found only in heart and skeletal muscles.

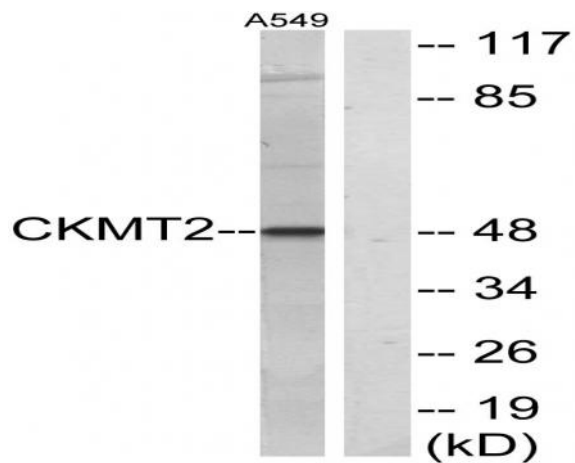
Products Images



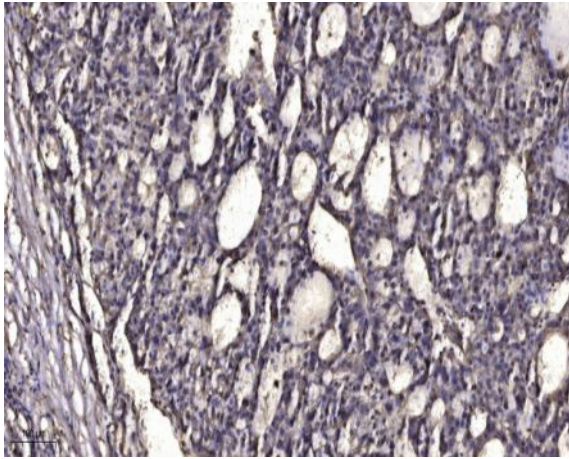
Western Blot analysis of various cells using sMtCK Polyclonal Antibody



Immunofluorescence analysis of NIH/3T3 cells, using CKMT2 Antibody. The picture on the right is blocked with the synthesized peptide.



Western blot analysis of lysates from A549 cells, using CKMT2 Antibody. The lane on the right is blocked with the synthesized peptide.



Immunohistochemical analysis of paraffin-embedded human liver cancer. 1, Antibody was diluted at 1:200(4° overnight). 2, Tris-EDTA,pH9.0 was used for antigen retrieval. 3,Secondary antibody was diluted at 1:200(room temperature, 45min).