

**SLC6A15 Polyclonal Antibody**

<b>Catalog No :</b>	YT4317
<b>Reactivity :</b>	Human;Rat;Mouse;
<b>Applications :</b>	WB;IHC
<b>Target :</b>	SLC6A15
<b>Gene Name :</b>	SLC6A15
<b>Protein Name :</b>	Sodium-dependent neutral amino acid transporter B(0)AT2
<b>Human Gene Id :</b>	55117
<b>Human Swiss Prot No :</b>	Q9H2J7
<b>Mouse Swiss Prot No :</b>	Q8BG16
<b>Immunogen :</b>	The antiserum was produced against synthesized peptide derived from human SLC6A15. AA range:32-81
<b>Specificity :</b>	SLC6A15 Polyclonal Antibody detects endogenous levels of SLC6A15 protein.
<b>Formulation :</b>	Liquid in PBS containing 50% glycerol, 0.5% BSA and 0.02% sodium azide.
<b>Source :</b>	Polyclonal, Rabbit,IgG
<b>Dilution :</b>	WB 1:500-2000;IHC 1:50-300
<b>Purification :</b>	The antibody was affinity-purified from rabbit antiserum by affinity-chromatography using epitope-specific immunogen.
<b>Concentration :</b>	1 mg/ml
<b>Storage Stability :</b>	-15°C to -25°C/1 year(Do not lower than -25°C)
<b>Observed Band :</b>	85kD

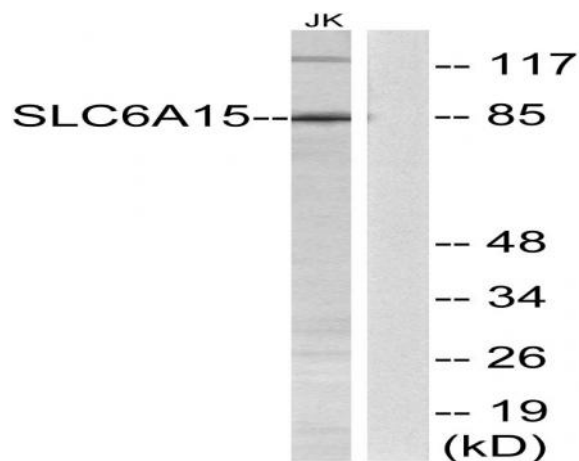
**Background :** This gene encodes a member of the solute carrier family 6 protein family which transports neutral amino acids. The encoded protein is thought to play a role in neuronal amino acid transport (PMID: 16185194) and may be associated with major depression (PMID: 21521612). Multiple transcript variants encoding different isoforms have been found for this gene. [provided by RefSeq, Feb 2012],

**Function :** function:Not yet known, orphan transporter.,similarity:Belongs to the sodium:neurotransmitter symporter (SNF) family.,

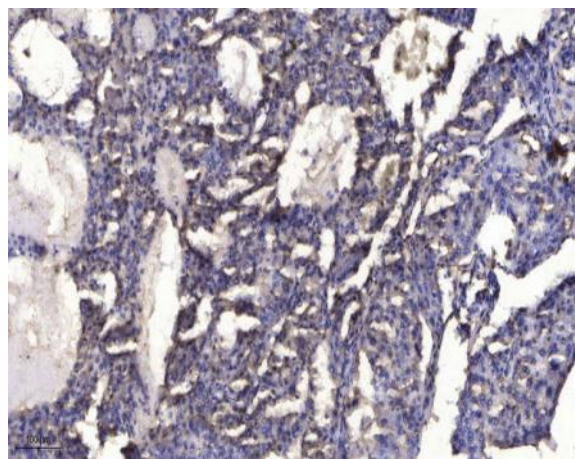
**Subcellular Location :** Membrane ; Multi-pass membrane protein .

**Expression :** Almost exclusively expressed in the brain.

## Products Images



Western blot analysis of lysates from Jurkat cells, using SLC6A15 Antibody. The lane on the right is blocked with the synthesized peptide.



Immunohistochemical analysis of paraffin-embedded human liver cancer. 1, Antibody was diluted at 1:200(4° overnight). 2, Tris-EDTA,pH9.0 was used for antigen retrieval. 3,Secondary antibody was diluted at 1:200(room temperature, 45min).