

**TBX15/18 Polyclonal Antibody**

|                              |                                                                                                                       |
|------------------------------|-----------------------------------------------------------------------------------------------------------------------|
| <b>Catalog No :</b>          | YT4566                                                                                                                |
| <b>Reactivity :</b>          | Human;Mouse                                                                                                           |
| <b>Applications :</b>        | WB;IHC;IF;ELISA                                                                                                       |
| <b>Target :</b>              | TBX15/18                                                                                                              |
| <b>Gene Name :</b>           | TBX15/TBX18                                                                                                           |
| <b>Protein Name :</b>        | T-box transcription factor TBX15/18                                                                                   |
| <b>Human Gene Id :</b>       | 9096                                                                                                                  |
| <b>Human Swiss Prot No :</b> | O95935/Q96SF7                                                                                                         |
| <b>Mouse Gene Id :</b>       | 76365/21384                                                                                                           |
| <b>Immunogen :</b>           | The antiserum was produced against synthesized peptide derived from human TBX15/18. AA range:161-210                  |
| <b>Specificity :</b>         | TBX15/18 Polyclonal Antibody detects endogenous levels of TBX15/18 protein.                                           |
| <b>Formulation :</b>         | Liquid in PBS containing 50% glycerol, 0.5% BSA and 0.02% sodium azide.                                               |
| <b>Source :</b>              | Polyclonal, Rabbit,IgG                                                                                                |
| <b>Dilution :</b>            | WB 1:500 - 1:2000. IHC 1:100 - 1:300. IF 1:200 - 1:1000. ELISA: 1:20000. Not yet tested in other applications.        |
| <b>Purification :</b>        | The antibody was affinity-purified from rabbit antiserum by affinity-chromatography using epitope-specific immunogen. |
| <b>Concentration :</b>       | 1 mg/ml                                                                                                               |
| <b>Storage Stability :</b>   | -15°C to -25°C/1 year(Do not lower than -25°C)                                                                        |
| <b>Observed Band :</b>       | 64kD                                                                                                                  |

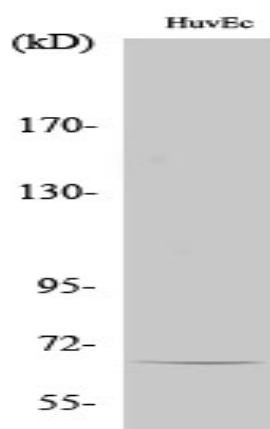
**Background :** T-box 18(TBX18) Homo sapiens This genes codes for a member of an evolutionarily conserved family of transcription factors that plays a crucial role in embryonic development. The family is characterized by the presence of the DNA-binding T-box domain and is divided into five sub-families based on sequence conservation in this domain. The encoded protein belongs to the vertebrate specific Tbx1 sub-family. The protein acts as a transcriptional repressor by antagonizing transcriptional activators in the T-box family. The protein forms homo- or heterodimers with other transcription factors of the T-box family or other transcription factors. [provided by RefSeq, Nov 2012],

**Function :** function:Probable transcriptional regulator involved in developmental processes.,similarity:Contains 1 T-box DNA-binding domain.,

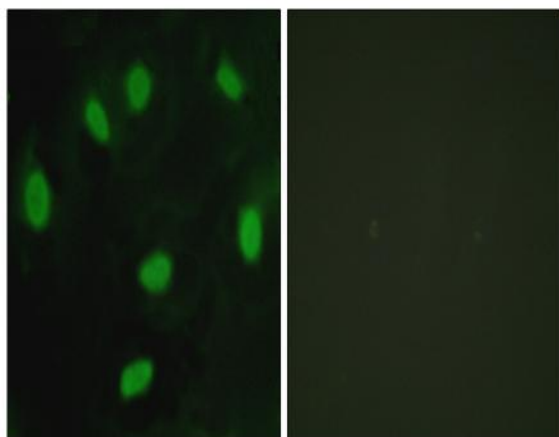
**Subcellular Location :** Nucleus .

**Expression :** Lung,

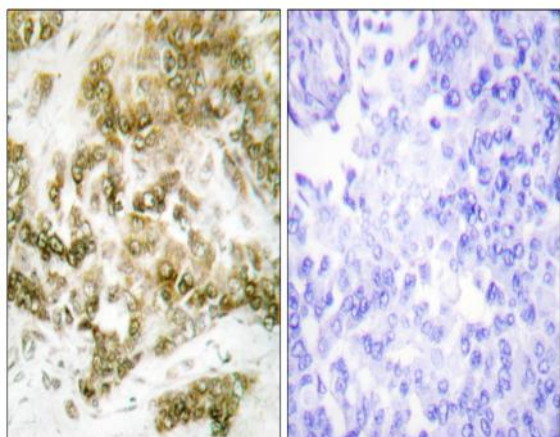
## Products Images



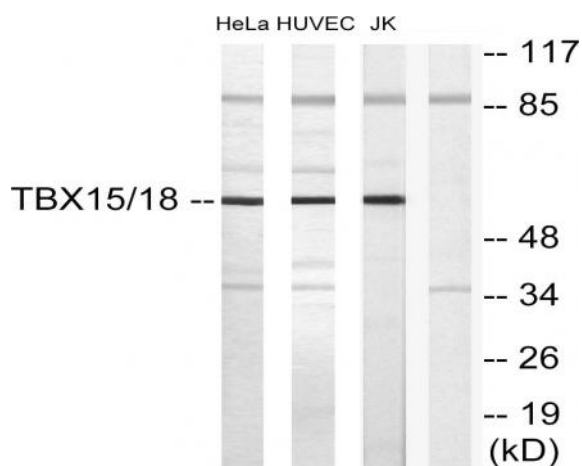
Western Blot analysis of various cells using TBX15/18 Polyclonal Antibody cells nucleus extracted by Minute TM Cytoplasmic and Nuclear Fractionation kit (SC-003, Inventbiotech, MN, USA).



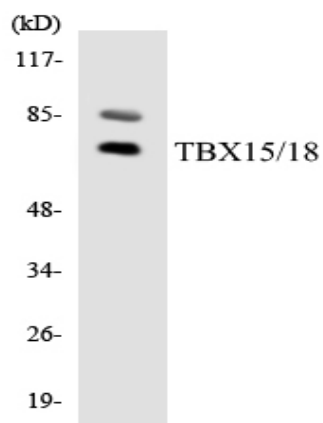
Immunofluorescence analysis of HeLa cells, using TBX15/18 Antibody. The picture on the right is blocked with the synthesized peptide.



Immunohistochemistry analysis of paraffin-embedded human breast carcinoma tissue, using TBX15/18 Antibody. The picture on the right is blocked with the synthesized peptide.



Western blot analysis of lysates from HUVEC, HeLa, and Jurkat cells, using TBX15/18 Antibody. The lane on the right is blocked with the synthesized peptide.



Western blot analysis of the lysates from HeLa cells using TBX15/18 antibody.