

## Six2 Polyclonal Antibody

<b>Catalog No :</b>	YT4306
<b>Reactivity :</b>	Human;Mouse
<b>Applications :</b>	WB;IHC
<b>Target :</b>	Six2
<b>Gene Name :</b>	SIX2
<b>Protein Name :</b>	Homeobox protein SIX2
<b>Human Gene Id :</b>	10736
<b>Human Swiss Prot No :</b>	Q9NPC8
<b>Mouse Gene Id :</b>	20472
<b>Mouse Swiss Prot No :</b>	Q62232
<b>Immunogen :</b>	Synthesized peptide derived from Six2 . at AA range: 30-110
<b>Specificity :</b>	Six2 Polyclonal Antibody detects endogenous levels of Six2 protein.
<b>Formulation :</b>	Liquid in PBS containing 50% glycerol, 0.5% BSA and 0.02% sodium azide.
<b>Source :</b>	Polyclonal, Rabbit,IgG
<b>Dilution :</b>	WB 1:500-2000;IHC 1:50-300
<b>Purification :</b>	The antibody was affinity-purified from rabbit antiserum by affinity-chromatography using epitope-specific immunogen.
<b>Concentration :</b>	1 mg/ml
<b>Storage Stability :</b>	-15°C to -25°C/1 year(Do not lower than -25°C)

**Observed Band :** 33kD

**Background :** This gene is a member of the vertebrate gene family which encode proteins homologous to the Drosophila *sine oculis* homeobox protein. The encoded protein is a transcription factor which, like other members of this gene family, may be involved in limb or eye development. [provided by RefSeq, Dec 2008],

**Function :** function:May be involved in limb tendon and ligament development.,similarity:Belongs to the SIX/Sine oculis homeobox family.,similarity:Contains 1 homeobox DNA-binding domain.,tissue specificity:Strongly expressed in skeletal muscle.,

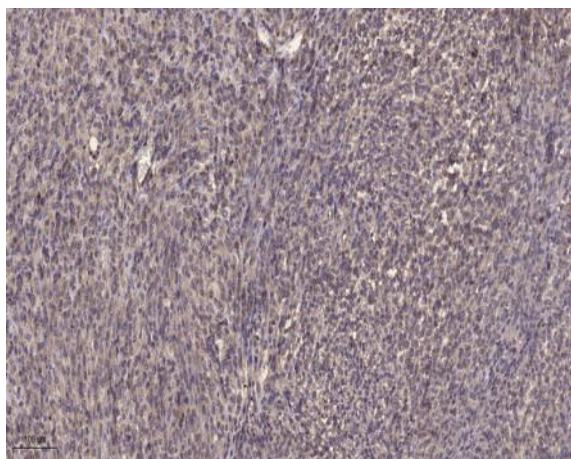
**Subcellular Location :** Nucleus .

**Expression :** Strongly expressed in skeletal muscle. Expressed in Wilms' tumor and in the cap mesenchyme of fetal kidney (at protein level).

## Products Images



Western blot analysis of SIX2 Antibody. The lane on the right is blocked with the SIX2 peptide.



Immunohistochemical analysis of paraffin-embedded human Colon cancer. 1, Antibody was diluted at 1:200(4° overnight). 2, Tris-EDTA,pH9.0 was used for antigen retrieval. 3,Secondary antibody was diluted at 1:200(room temperature, 45min).