

TBL2 Polyclonal Antibody

Catalog No :	YT4562
Reactivity :	Human;Mouse
Applications :	WB;IHC;IF;ELISA
Target :	TBL2
Gene Name :	TBL2
Protein Name :	Transducin beta-like protein 2
Human Gene Id :	26608
Human Swiss Prot No :	Q9Y4P3
Mouse Swiss Prot No :	Q9R099
Immunogen :	The antiserum was produced against synthesized peptide derived from human TBL2. AA range:381-430
Specificity :	TBL2 Polyclonal Antibody detects endogenous levels of TBL2 protein.
Formulation :	Liquid in PBS containing 50% glycerol, 0.5% BSA and 0.02% sodium azide.
Source :	Polyclonal, Rabbit,IgG
Dilution :	WB 1:500 - 1:2000. IHC 1:100 - 1:300. ELISA: 1:5000.. IF 1:50-200
Purification :	The antibody was affinity-purified from rabbit antiserum by affinity-chromatography using epitope-specific immunogen.
Concentration :	1 mg/ml
Storage Stability :	-15°C to -25°C/1 year(Do not lower than -25°C)
Observed Band :	50kD

Background :

This gene encodes a member of the beta-transducin protein family. Most proteins of the beta-transducin family are involved in regulatory functions. This protein is possibly involved in some intracellular signaling pathway. This gene is deleted in Williams-Beuren syndrome, a developmental disorder caused by deletion of multiple genes at 7q11.23. [provided by RefSeq, Jul 2008],

Function :

disease:Haploinsufficiency of TBL2 may be the cause of certain cardiovascular and musculo-skeletal abnormalities observed in Williams-Beuren syndrome (WBS) [MIM:194050]. WBS is a rare developmental disorder. It is a contiguous gene deletion syndrome involving genes from chromosome band 7q11.23.,PTM:Phosphorylated upon DNA damage, probably by ATM or ATR.,similarity:Contains 7 WD repeats.,

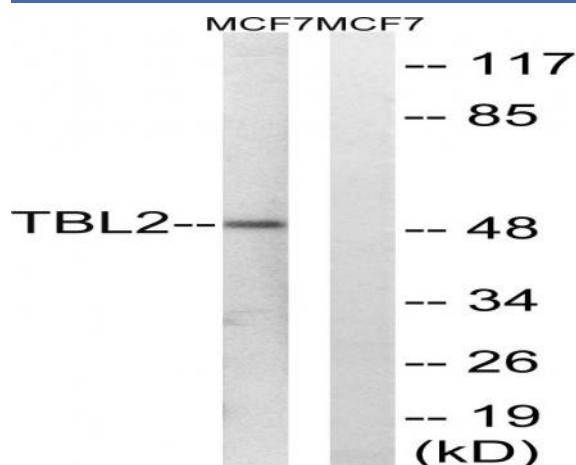
Subcellular Location :

endoplasmic reticulum,integral component of endoplasmic reticulum membrane,

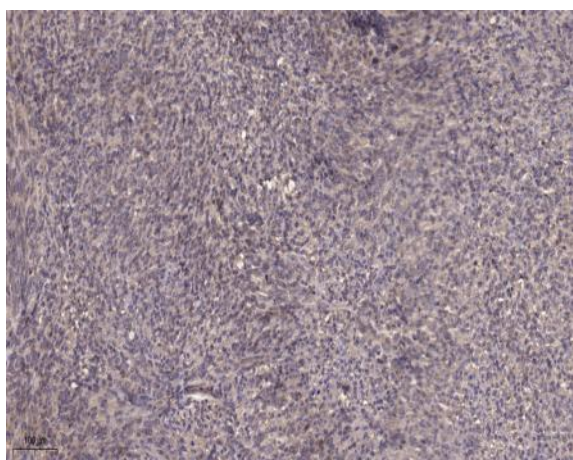
Expression :

Kidney,Testis,Whole embryo,

Products Images



Western blot analysis of lysates from MCF-7 cells, using TBL2 Antibody. The lane on the right is blocked with the synthesized peptide.



Immunohistochemical analysis of paraffin-embedded human Colon cancer. 1, Antibody was diluted at 1:200(4° overnight). 2, Tris-EDTA,pH9.0 was used for antigen retrieval. 3,Secondary antibody was diluted at 1:200(room temperature, 45min).