

## TAF I p48 Polyclonal Antibody

<b>Catalog No :</b>	YT4525
<b>Reactivity :</b>	Human;Rat
<b>Applications :</b>	WB;IHC;IF;ELISA
<b>Target :</b>	TAF I p48
<b>Gene Name :</b>	TAF1A
<b>Protein Name :</b>	TATA box-binding protein-associated factor RNA polymerase I subunit A
<b>Human Gene Id :</b>	9015
<b>Human Swiss Prot No :</b>	Q15573
<b>Mouse Swiss Prot No :</b>	P97357
<b>Rat Gene Id :</b>	360893
<b>Rat Swiss Prot No :</b>	Q3B7U2
<b>Immunogen :</b>	The antiserum was produced against synthesized peptide derived from human TAF1A. AA range:301-350
<b>Specificity :</b>	TAF I p48 Polyclonal Antibody detects endogenous levels of TAF I p48 protein.
<b>Formulation :</b>	Liquid in PBS containing 50% glycerol, 0.5% BSA and 0.02% sodium azide.
<b>Source :</b>	Polyclonal, Rabbit,IgG
<b>Dilution :</b>	WB 1:500 - 1:2000. IHC 1:100 - 1:300. ELISA: 1:20000.. IF 1:50-200
<b>Purification :</b>	The antibody was affinity-purified from rabbit antiserum by affinity-chromatography using epitope-specific immunogen.
<b>Concentration :</b>	1 mg/ml

**Storage Stability :** -15°C to -25°C/1 year(Do not lower than -25°C)

**Observed Band :** 53kD

**Background :** This gene encodes a subunit of the RNA polymerase I complex, Selectivity Factor I (SLI). The encoded protein is a TATA box-binding protein-associated factor that plays a role in the assembly of the RNA polymerase I preinitiation complex. Alternate splicing results in multiple transcript variants encoding multiple isoforms.[provided by RefSeq, Jan 2011],

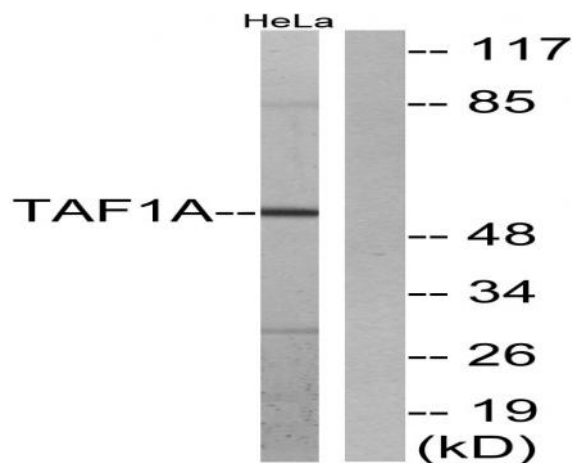
**Function :** function:Component of the transcription factor SL1/TIFIB complex involved in the assembly of the PIC (preinitiation complex).,subunit:Component of the transcription factor SL1/TIFIB complex which is composed of TBP and at least TAF1A, TAF1B and TAF1C. In the complex, interacts directly with TBP, TAF1B and TAF1C. Interaction of the SL1/TIFIB subunits with TBP excludes interaction with the transcription factor IID (TFIID) subunits. This mutually exclusive binding directs the formation of promoter and RNA polymerase-selective TBP-TAF complexes.,

**Subcellular Location :** Nucleus.

**Location :**

**Expression :** Embryo,Skin,

## Products Images



Western blot analysis of lysates from HeLa cells, using TAF1A Antibody. The lane on the right is blocked with the synthesized peptide.



Immunohistochemical analysis of paraffin-embedded human spleen. 1, Tris-EDTA, pH 9.0 was used for antigen retrieval. 2 Antibody was diluted at 1:200 (4° overnight). 3, Secondary antibody was diluted at 1:200 (room temperature, 45 min).