

SH3BGR Polyclonal Antibody

Catalog No :	YT4279
Reactivity :	Human;Mouse;Rat
Applications :	WB;IHC
Target :	SH3BGR
Gene Name :	SH3BGR
Protein Name :	SH3 domain-binding glutamic acid-rich protein
Human Gene Id :	6450
Human Swiss Prot No :	P55822
Mouse Gene Id :	50795
Mouse Swiss Prot No :	Q9WUZ7
Immunogen :	The antiserum was produced against synthesized peptide derived from human SH3BGR. AA range:81-130
Specificity :	SH3BGR Polyclonal Antibody detects endogenous levels of SH3BGR protein.
Formulation :	Liquid in PBS containing 50% glycerol, 0.5% BSA and 0.02% sodium azide.
Source :	Polyclonal, Rabbit,IgG
Dilution :	WB 1:500-2000;IHC 1:50-300
Purification :	The antibody was affinity-purified from rabbit antiserum by affinity-chromatography using epitope-specific immunogen.
Concentration :	1 mg/ml
Storage Stability :	-15°C to -25°C/1 year(Do not lower than -25°C)

Observed Band : 26kD

Background : caution:It is uncertain whether Met-1 or Met-64 is the initiator.,similarity:Belongs to the SH3BGR family.,tissue specificity:Expressed in heart and skeletal muscle.,

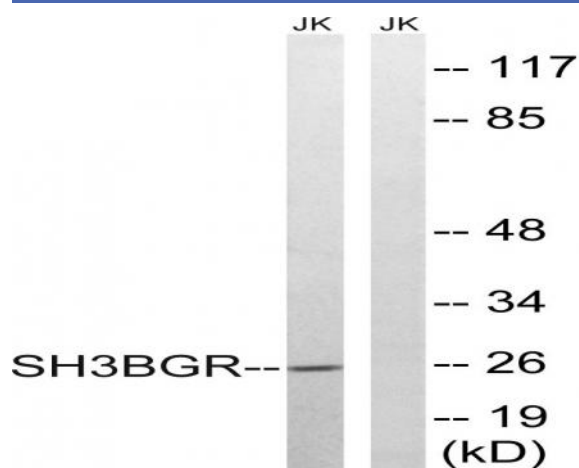
Function : caution:It is uncertain whether Met-1 or Met-64 is the initiator.,similarity:Belongs to the SH3BGR family.,tissue specificity:Expressed in heart and skeletal muscle.,

Subcellular Location : cytosol,

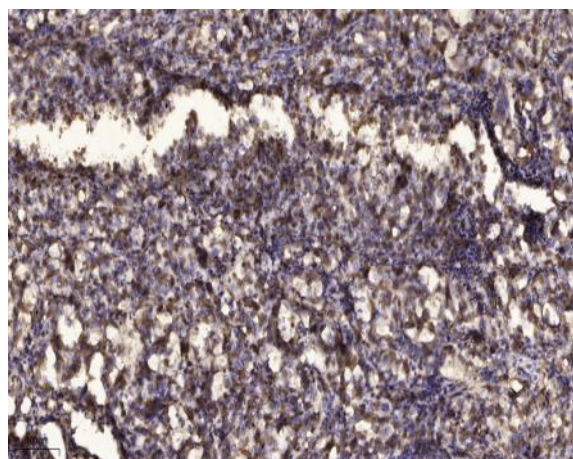
Location :

Expression : Expressed in heart and skeletal muscle.

Products Images



Western blot analysis of lysates from Jurkat cells, using SH3BGR Antibody. The lane on the right is blocked with the synthesized peptide.



Immunohistochemical analysis of paraffin-embedded human Squamous cell carcinoma of lung. 1, Antibody was diluted at 1:200(4° overnight). 2, Tris-EDTA,pH9.0 was used for antigen retrieval. 3,Secondary antibody was diluted at 1:200(room temperature, 45min).