

## T2R45 Polyclonal Antibody

<b>Catalog No :</b>	YT4511
<b>Reactivity :</b>	Human;Rat;Mouse;
<b>Applications :</b>	WB;ELISA
<b>Target :</b>	T2R45
<b>Fields :</b>	>>Taste transduction
<b>Gene Name :</b>	TAS2R45
<b>Protein Name :</b>	Taste receptor type 2 member 45
<b>Human Gene Id :</b>	259291
<b>Human Swiss Prot No :</b>	P59539
<b>Immunogen :</b>	The antiserum was produced against synthesized peptide derived from human TAS2R45. AA range:221-270
<b>Specificity :</b>	T2R45 Polyclonal Antibody detects endogenous levels of T2R45 protein.
<b>Formulation :</b>	Liquid in PBS containing 50% glycerol, 0.5% BSA and 0.02% sodium azide.
<b>Source :</b>	Polyclonal, Rabbit,IgG
<b>Dilution :</b>	WB 1:500 - 1:2000. ELISA: 1:5000. Not yet tested in other applications.
<b>Purification :</b>	The antibody was affinity-purified from rabbit antiserum by affinity-chromatography using epitope-specific immunogen.
<b>Concentration :</b>	1 mg/ml
<b>Storage Stability :</b>	-15°C to -25°C/1 year(Do not lower than -25°C)
<b>Observed Band :</b>	35kD

**Cell Pathway :** Taste transduction;

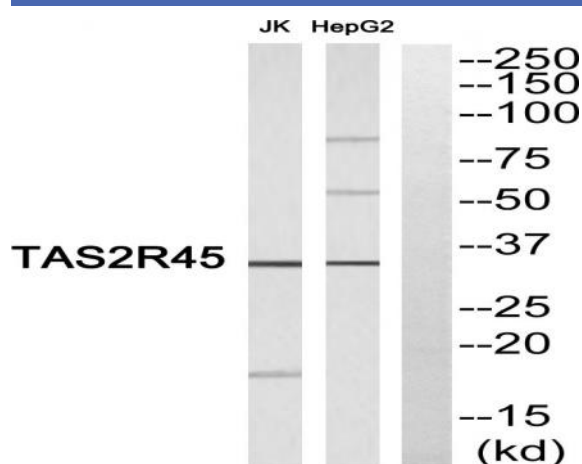
**Background :** function:Receptor that may play a role in the perception of bitterness and is gustducin-linked. May play a role in sensing the chemical composition of the gastrointestinal content. The activity of this receptor may stimulate alpha gustducin, mediate PLC-beta-2 activation and lead to the gating of TRPM5.,miscellaneous:Most taste cells may be activated by a limited number of bitter compounds; individual taste cells can discriminate among bitter stimuli.,similarity:Belongs to the G-protein coupled receptor T2R family.,tissue specificity:Expressed in subsets of taste receptor cells of the tongue and exclusively in gustducin-positive cells.,

**Function :** function:Receptor that may play a role in the perception of bitterness and is gustducin-linked. May play a role in sensing the chemical composition of the gastrointestinal content. The activity of this receptor may stimulate alpha gustducin, mediate PLC-beta-2 activation and lead to the gating of TRPM5.,miscellaneous:Most taste cells may be activated by a limited number of bitter compounds; individual taste cells can discriminate among bitter stimuli.,similarity:Belongs to the G-protein coupled receptor T2R family.,tissue specificity:Expressed in subsets of taste receptor cells of the tongue and exclusively in gustducin-positive cells.,

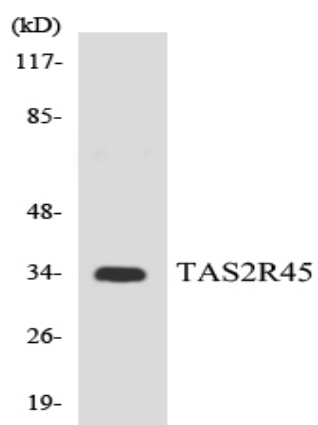
**Subcellular Location :** Membrane; Multi-pass membrane protein.

**Expression :** Expressed in subsets of taste receptor cells of the tongue and exclusively in gustducin-positive cells.

## Products Images



Western blot analysis of TAS2R45 Antibody. The lane on the right is blocked with the TAS2R45 peptide.



Western blot analysis of the lysates from HepG2 cells using TAS2R45 antibody.