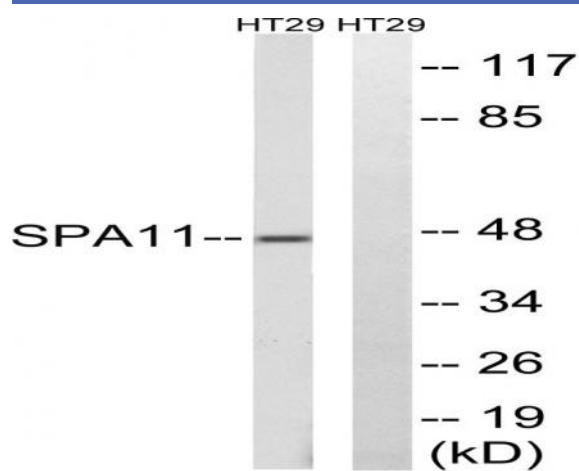


Serpin A11 Polyclonal Antibody

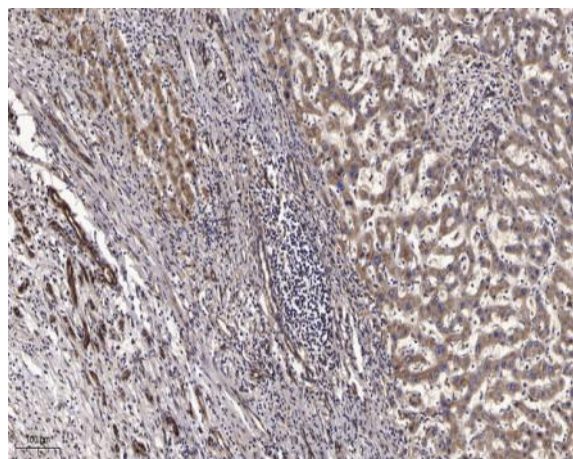
Catalog No :	YT4257
Reactivity :	Human;Rat;Mouse;
Applications :	WB;IHC
Target :	Serpin A11
Gene Name :	SERPINA11
Protein Name :	Serpin A11
Human Gene Id :	256394
Human Swiss Prot No :	Q86U17
Mouse Swiss Prot No :	Q8CIE0
Immunogen :	The antiserum was produced against synthesized peptide derived from human SERPINA11. AA range:191-240
Specificity :	Serpin A11 Polyclonal Antibody detects endogenous levels of Serpin A11 protein.
Formulation :	Liquid in PBS containing 50% glycerol, 0.5% BSA and 0.02% sodium azide.
Source :	Polyclonal, Rabbit,IgG
Dilution :	WB 1:500-2000;IHC 1:50-300
Purification :	The antibody was affinity-purified from rabbit antiserum by affinity-chromatography using epitope-specific immunogen.
Concentration :	1 mg/ml
Storage Stability :	-15°C to -25°C/1 year(Do not lower than -25°C)
Observed Band :	47kD

Background :	<u>similarity:Belongs to the serpin family.,</u>
Function :	<u>similarity:Belongs to the serpin family.,</u>
Subcellular Location :	<u>Secreted .</u>
Expression :	<u>Fetal liver,</u>

Products Images



Western blot analysis of lysates from HT-29 cells, using SERPINA11 Antibody. The lane on the right is blocked with the synthesized peptide.



Immunohistochemical analysis of paraffin-embedded human liver cancer. 1, Antibody was diluted at 1:200(4° overnight). 2, Tris-EDTA,pH9.0 was used for antigen retrieval. 3,Secondary antibody was diluted at 1:200(room temperature, 45min).