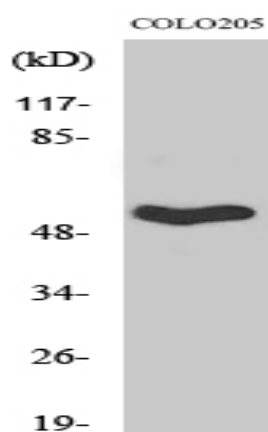


Septin 1 Polyclonal Antibody

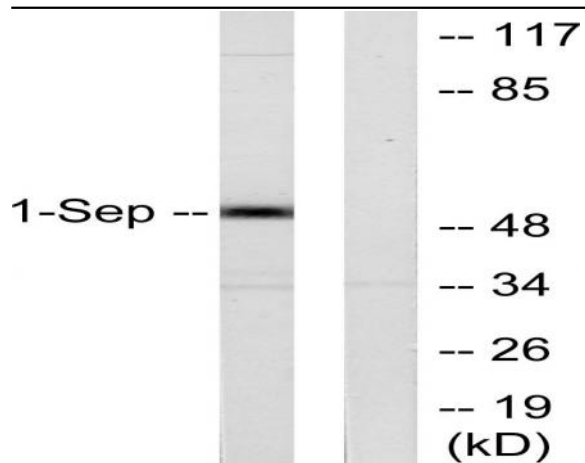
Catalog No :	YT4245
Reactivity :	Human;Mouse;Rat
Applications :	WB;IHC;IF;ELISA
Target :	Septin 1
Fields :	>>Bacterial invasion of epithelial cells
Gene Name :	SEPT1
Protein Name :	Septin-1
Human Gene Id :	1731
Human Swiss Prot No :	Q8WYJ6
Mouse Gene Id :	54204
Mouse Swiss Prot No :	P42209
Rat Gene Id :	293507
Rat Swiss Prot No :	Q5EB96
Immunogen :	The antiserum was produced against synthesized peptide derived from human SEPT1. AA range:181-230
Specificity :	Septin 1 Polyclonal Antibody detects endogenous levels of Septin 1 protein.
Formulation :	Liquid in PBS containing 50% glycerol, 0.5% BSA and 0.02% sodium azide.
Source :	Polyclonal, Rabbit,IgG
Dilution :	WB 1:500 - 1:2000. IHC 1:100 - 1:300. ELISA: 1:20000.. IF 1:50-200

Purification :	The antibody was affinity-purified from rabbit antiserum by affinity-chromatography using epitope-specific immunogen.
Concentration :	1 mg/ml
Storage Stability :	-15°C to -25°C/1 year(Do not lower than -25°C)
Observed Band :	41kD
Background :	septin 1(SEPT1) Homo sapiens This gene is a member of the septin family of GTPases. Members of this family are required for cytokinesis and the maintenance of cellular morphology. This gene encodes a protein that can form homo- and heterooligomeric filaments, and may contribute to the formation of neurofibrillary tangles in Alzheimer's disease. Alternatively spliced transcript variants have been found but the full-length nature of these variants has not been determined. [provided by RefSeq, Dec 2012],
Function :	function:Involved in cytokinesis .,similarity:Belongs to the septin family.,subunit:May assemble into a multicomponent structure.,
Subcellular Location :	Cytoplasm . Cytoplasm, cytoskeleton . Cytoplasm, cytoskeleton, microtubule organizing center, centrosome. Midbody. Remains at the centrosomes and the nearby microtubules throughout mitosis. Localizes to the midbody during cytokinesis.
Expression :	Expressed at high levels in lymphoid and hematopoietic tissues.

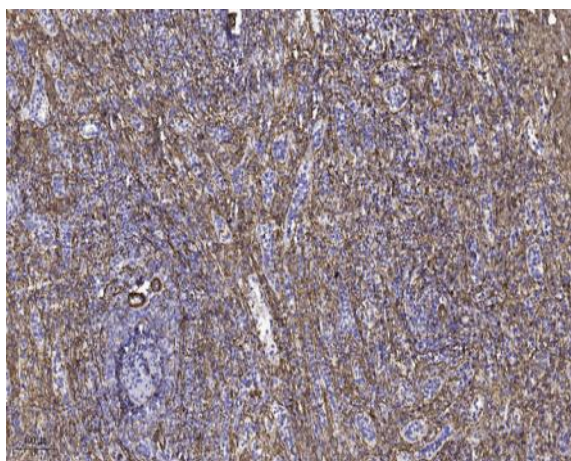
Products Images



Western Blot analysis of various cells using Septin 1 Polyclonal Antibody



Western blot analysis of lysates from Jurkat cells, using SEPT1 Antibody. The lane on the right is blocked with the synthesized peptide.



Immunohistochemical analysis of paraffin-embedded human spleen tissue. 1, primary Antibody was diluted at 1:200 (4° overnight). 2, Sodium citrate pH 6.0 was used for antigen retrieval (>98° C, 20min). 3, Secondary antibody was diluted at 1:200